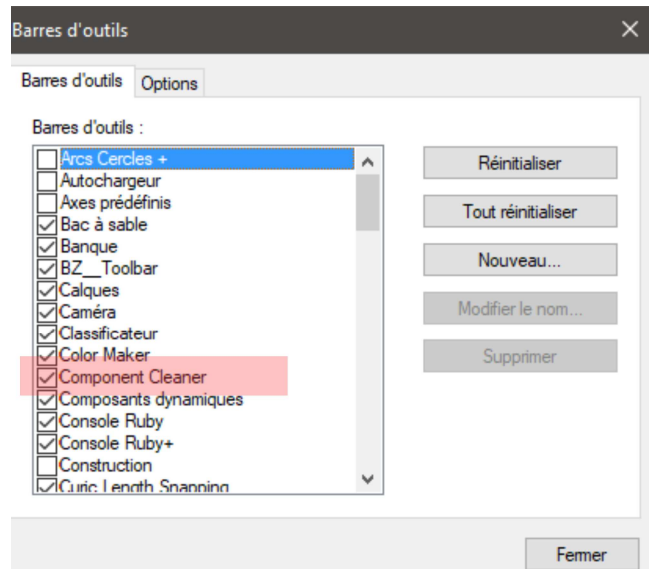


Component Cleaner 1.0.0 for SketchUp 2014 and higher (Make or Pro)

D. Bur - Dec. 2018

Component Cleaner is a plugin that helps you organize and rename your components materials, export them and their textures in separate folders.

After installation, select **Toolbars** in the Display menu, and tick the **Components Cleaner** checkbox:



There are 3 icons in the toolbar:




1. Settings:

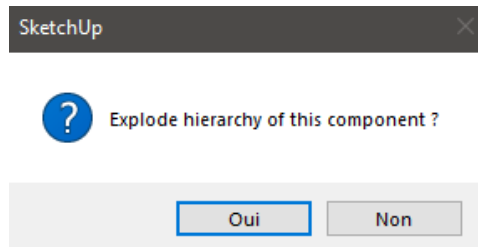
Clicking on the icon  will display this dialog:



This is not used at this time, it will be used later for more automation.


2. Purge component:

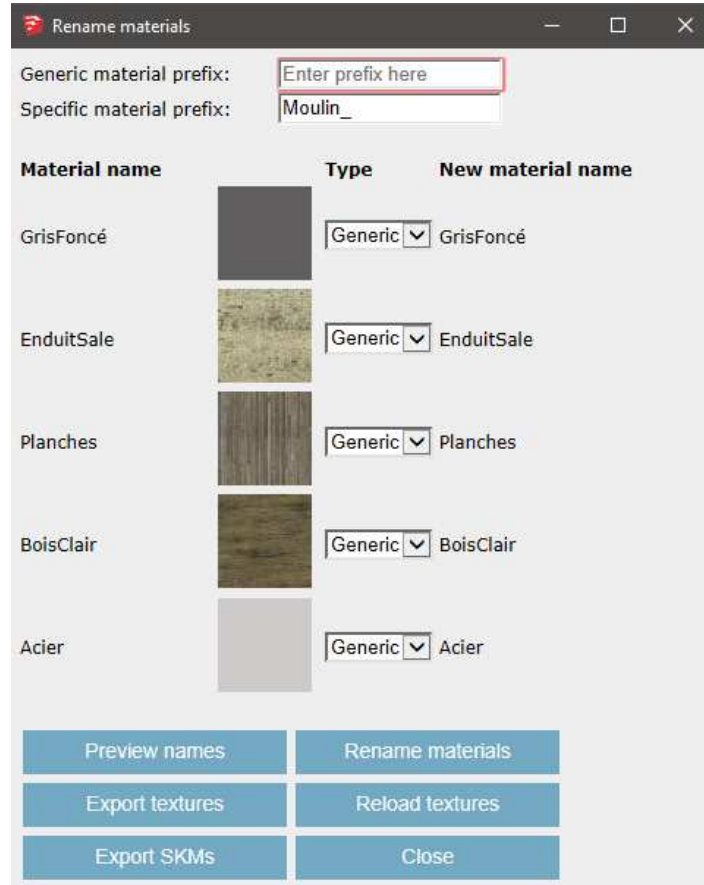
Click on the icon  will ask you if you want to explode all groups and sub-components in the component:



If **Yes**, all groups and components are exploded, and their definitions are deleted from the model. Then all other unused stuff is purged.
If **No**, all other unused sub-components, layers, materials and styles are purged.

3. Rename materials dialog:

Click on the icon  will display the below dialog:



In this component there are 5 materials, 2 solid colors and 3 textured materials.

3 steps you can achieve to "clean" and organize the materials:

1. Rename materials:

- Enter a prefix for the "generic" materials (those which can be used throughout the model or in other models), or leave it blank (defaults to an empty string).
- Enter a prefix for the materials you want to be "specific" to this component, or leave it blank (defaults to "componentName_")
- For each material, choose in the list whether it is a generic or specific.
- Click on the **Preview names** button to update the **New material name column**.
- When ready, click on **Rename Materials**. See results in your materials palette.

2. Export textures and reload them into your materials:

Click on **Export textures**. All images will be exported to a **maps** folder (just under the model folder).

Click on **Reload textures** to load the exported images from the **maps** folder.

The full paths of your textures will be updated in the materials palette.

3. Export SKMs:

If you want to keep track of your materials at the SketchUp format, click on **Export SKMs**. All the materials are saved in a **materials** folder (just under the model folder).
