

TREE FACTORY

FOR SKETCHUP 3D BY RICHARD JEFFREY



The aim of the TREE FACTORY is to quickly develop a vast number of tree variations.

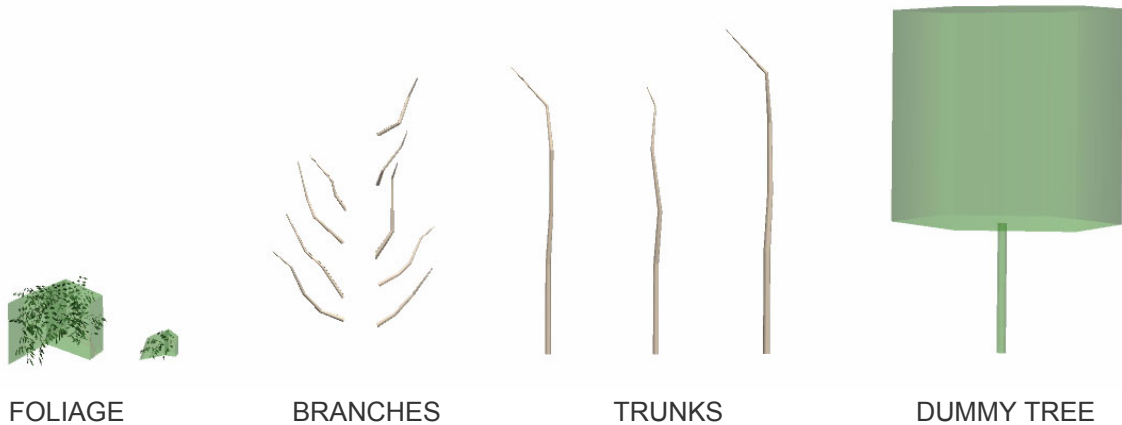
The collection includes:

ELEMENT

TRUNKS
BRANCHES
TWO FOLIAGE ELEMENTS
TWO DUMMY FOLIAGE ELEMENTS
DUMMY TREE ELEMENT

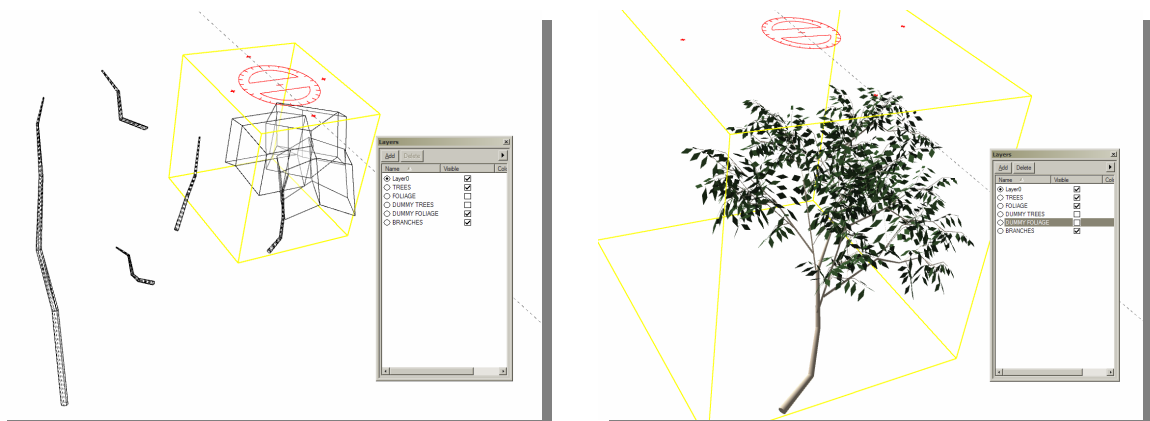
LAYER

TREES
BRANCHES
FOLIAGE
DUMMY FOLIAGE
DUMMY TREES

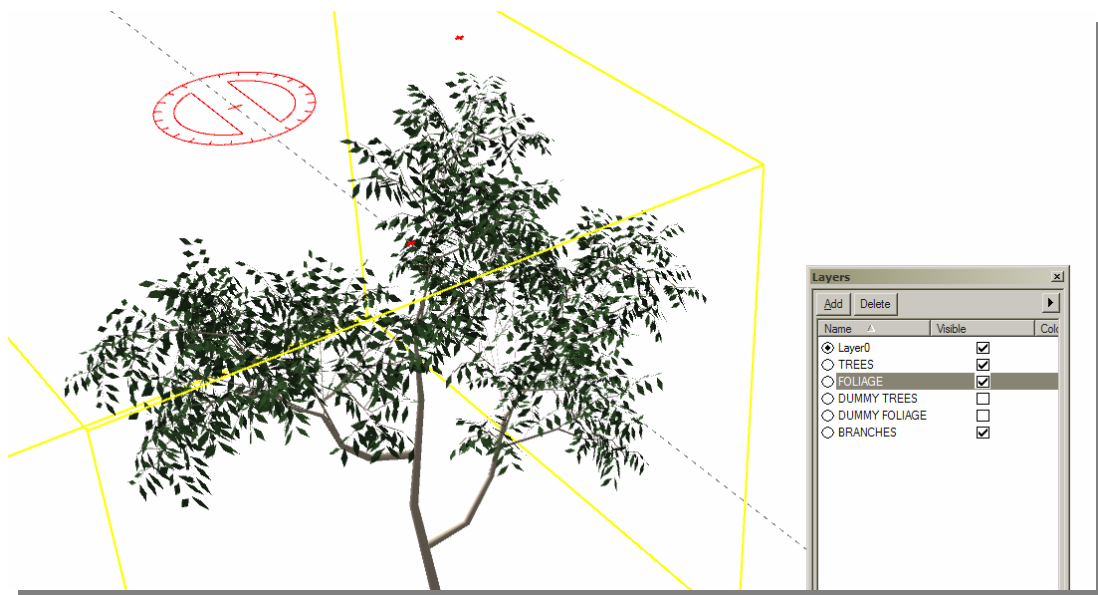


First the branches are chosen and loaded with foliage with the assistance of the dummy foliage elements (FOLIAGE layer off) the dummies are rotated and moved into the desired position on the branch. It is recommended the dummy be moved and located by the mid point at the back of its base. It is suggested you switch to shaded view and turn on the FOLIAGE layer on and DUMMY FOLIAGE off to test your configuration. Switch back to hidden line mode to move any foliage as required. Note that 2-3 groups of foliage to each branch is generally ample.

The foliage can now be grouped with the branch.

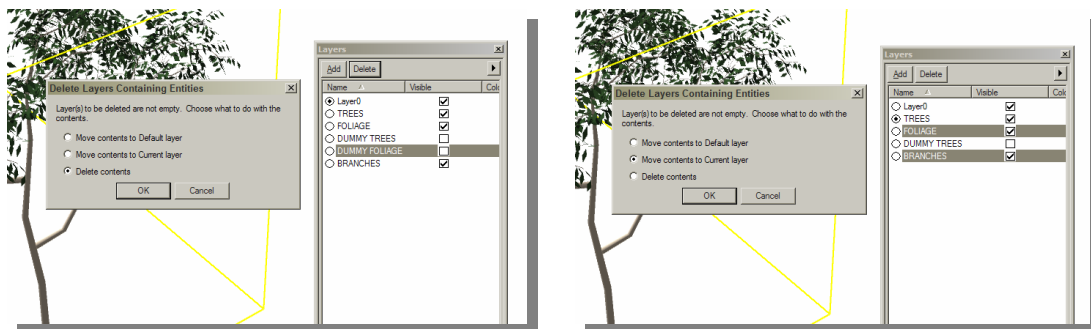


The same method can be followed to apply foliage to the crown of the trunk. Once you have completed loading the branches you can move/rotate the foliage/branch groups into the desired location upon the trunk.



Once complete the dummy foliage can be discarded by deleting the DUMMY FOLIAGE layer and its contents (new feature to version 4).

The TREES layer can then be selected as the current layer and the FOLIAGE and BRANCHES layers deleted and the contents moved to the current layer (TREES layer).



The Dummy tree element can be moved over the model and scaled to fit then all grouped.

It is suggested at this point you do a validity check for any non planar surfaces.

Before saving the model delete all unwanted branches and trunks and turn off the TREES layer. This will ensure the TREE layer is off when the component is imported into a new model.

The component can then be imported into a new model bringing in two new layers with it TREES and DUMMY TREES, with the TREES layer off the dummy trees can be distributed, orientated and scaled quickly. The DUMMY TREE layer can then be turned off and the TREES layer turned on prior to image export.

rjdesign@optusnet.com.au

