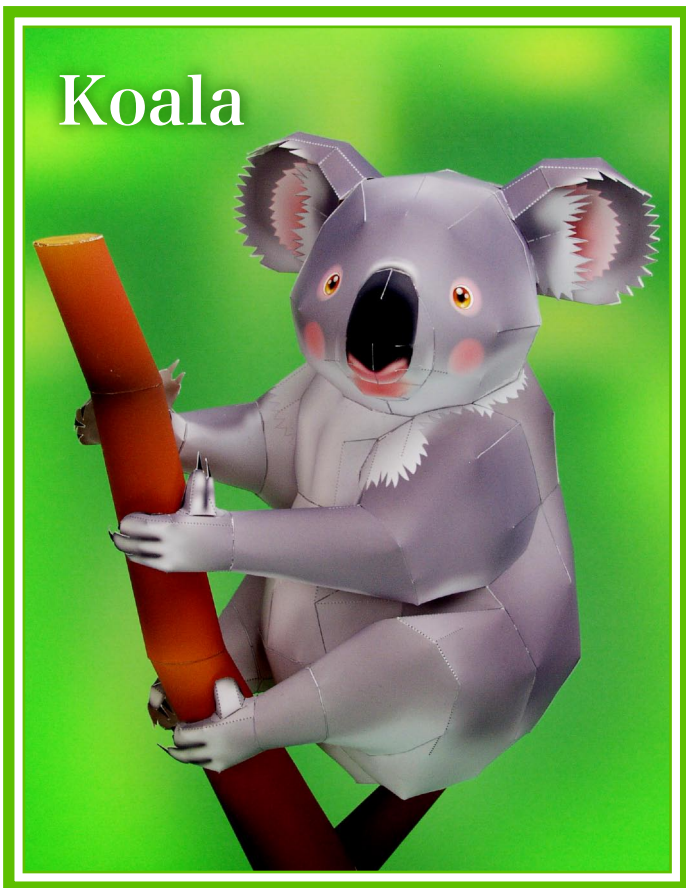


CREATIVE PARK

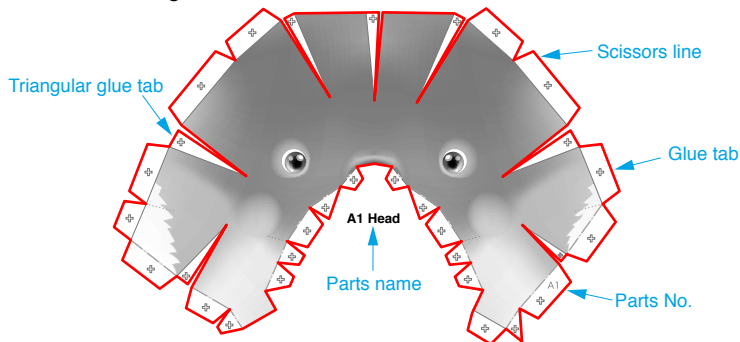
<http://www.canon.com/c-park/>



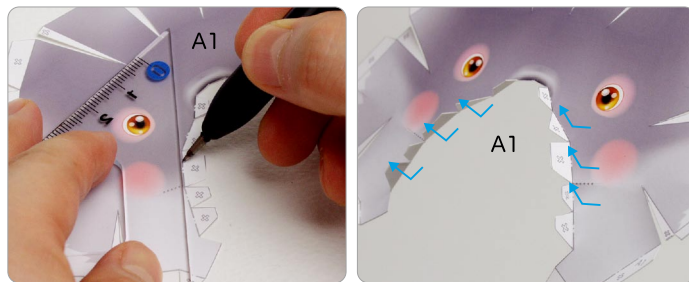
A Assemble the head

Use pattern: Page2/Page3.

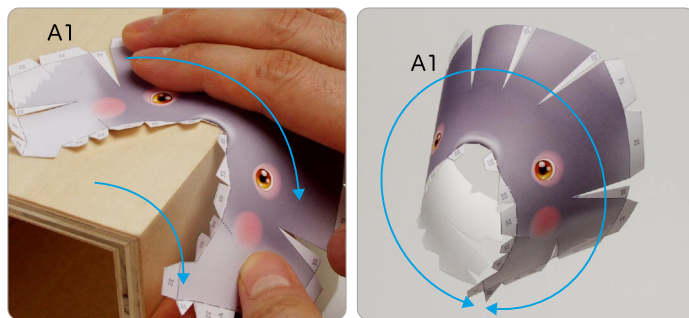
- ① Cut out A1 by cutting along the lines.
- ★ Cut along the line marked



- ② Make a mountain fold and valley fold on A1.
- ★ Trace along the mountain fold line and valley fold line with a stencil pen, scoring it to make it easier to fold.



- ③ The parts will be easier to assemble if curled.
- ★ Using the photo as a guide, move your fingers in the direction of the arrow, adjusting the pressure to curl the paper.



| Tools | Notation Key |
|-------------------------|------------------|
| Scissors | Scissors line |
| Paste, or woodwork glue | Mountain fold |
| Stencil pen, or bodkin | Valley fold |
| Ruler | Glue spot |
| | A1, B1 Parts No. |

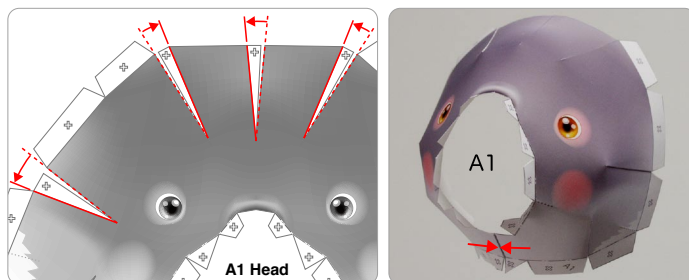
◆ The Assembly instructions are divided into four blocks: A (head), B (arms, body), C (legs), and D (tree branch, display stand). Follow the instructions for each block to assemble your koala.

◆ ★ marks a basic assembly technique that remains the same regardless of the part. Instructions are printed only for the first instance.

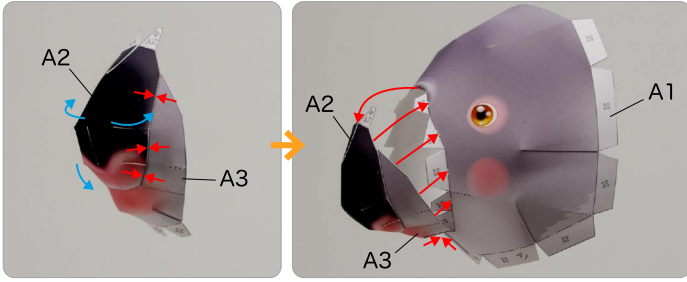
<Caution>

- ✘ Keep scissors and glue away from small children.
- ✘ Be careful not to cut your fingers when using scissors.

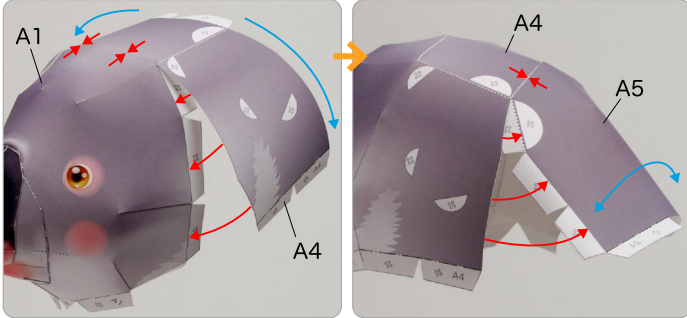
- ④ Add a slight curl to A1 when attaching it.
- ★ Attach the triangular glue tabs so that the front side becomes convex.
- ★ Using the photo as a guide, attach in the direction of the arrow.



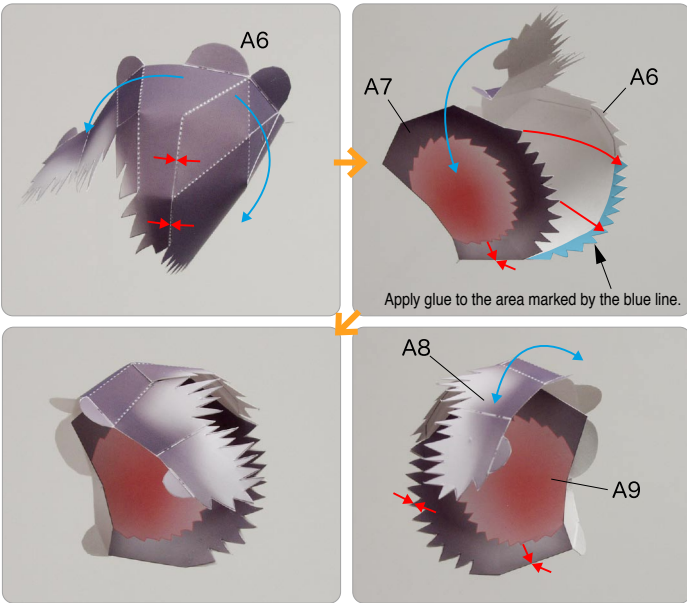
⑤ Attach A2 and A3, and attach them to A1.



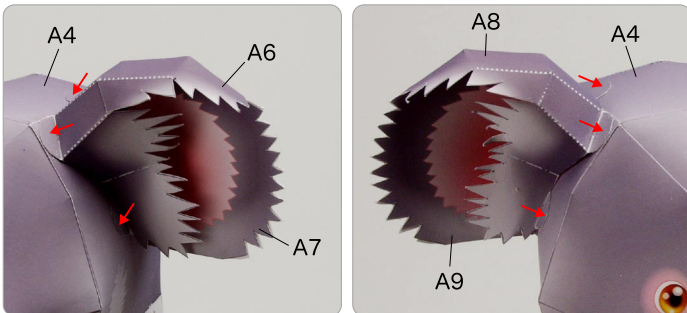
⑥ Attach A1 and A4, and attach them to A5.



⑦ Attach A6 and A7, and A8 and A9.



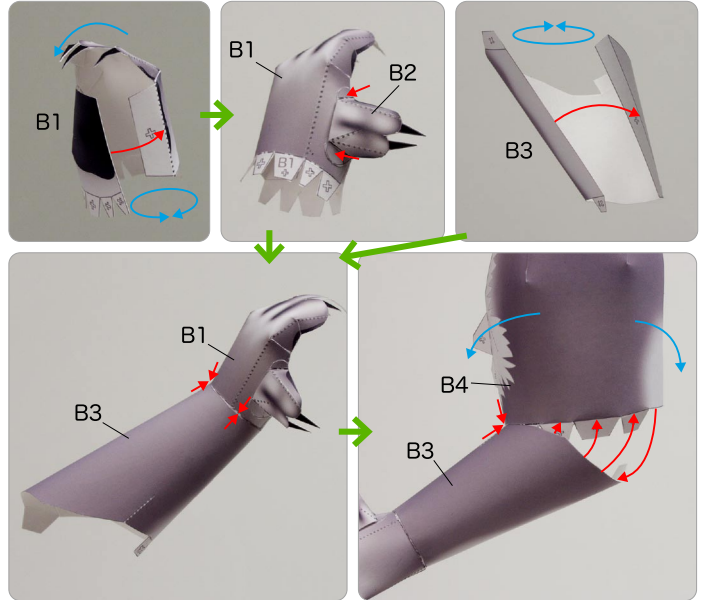
⑧ Attach the ears to A4 and A5, and the head is complete.



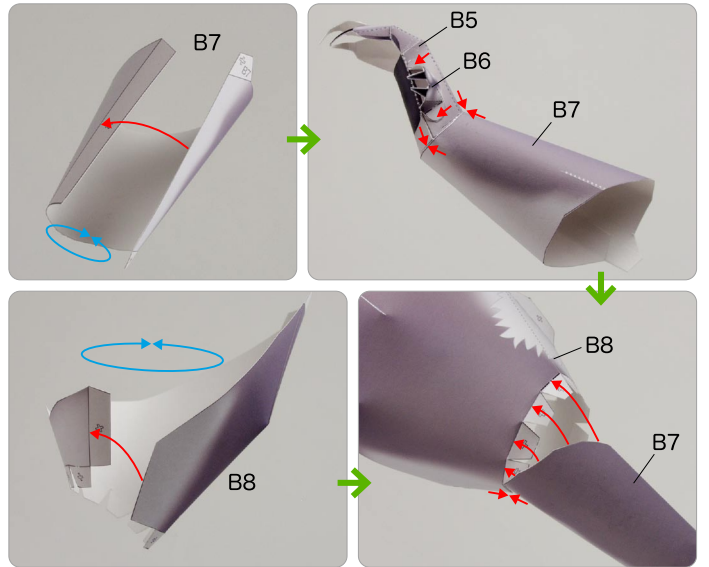
B Assemble the arms and body

Use pattern: Page4 to Page6.

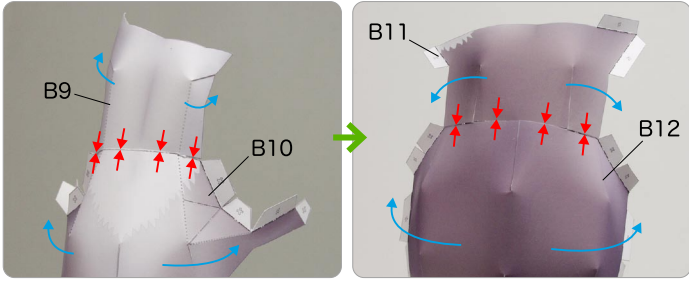
① Assemble B1 to B4, attach them in order.



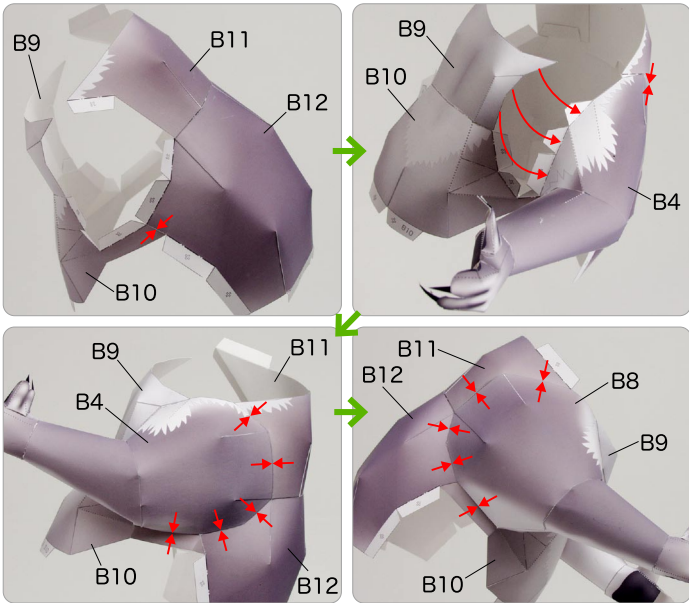
② Attach B5 to B8 in the same way.



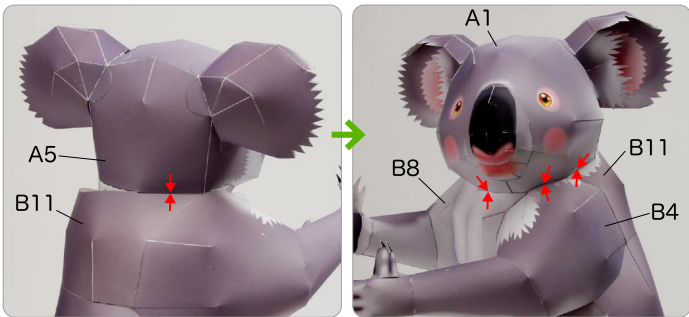
③ Assemble B9 and B10, and B11 and B12 together.



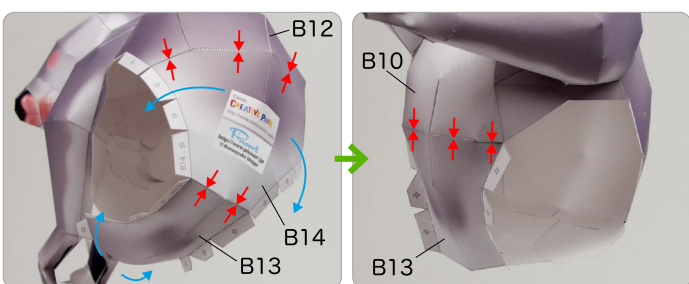
④ Attach B10 and B12, and attach the arms to them.



⑤ Attach the head and body.



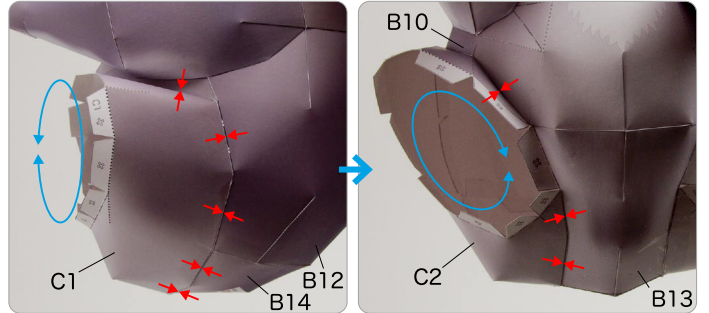
⑥ Attach B13 and B14, and attach them to the body, and the body is complete.



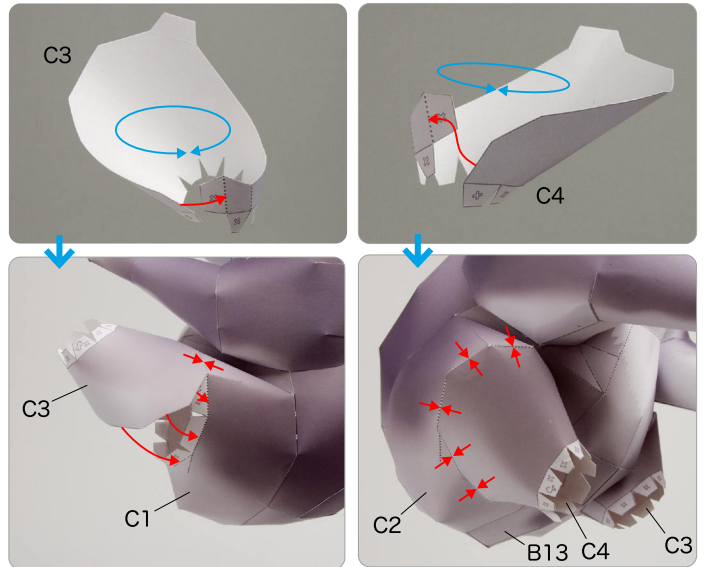
C Assemble the legs

Use pattern: Page7.

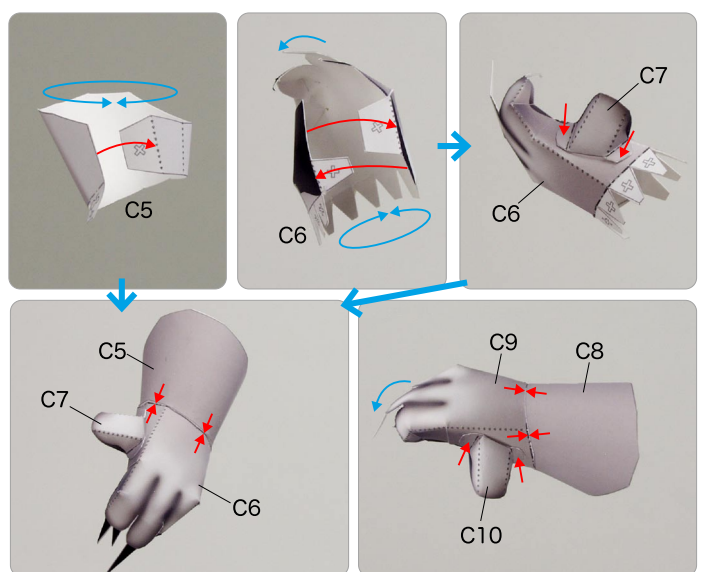
① Assemble C1 and C2, and attach them to the body.



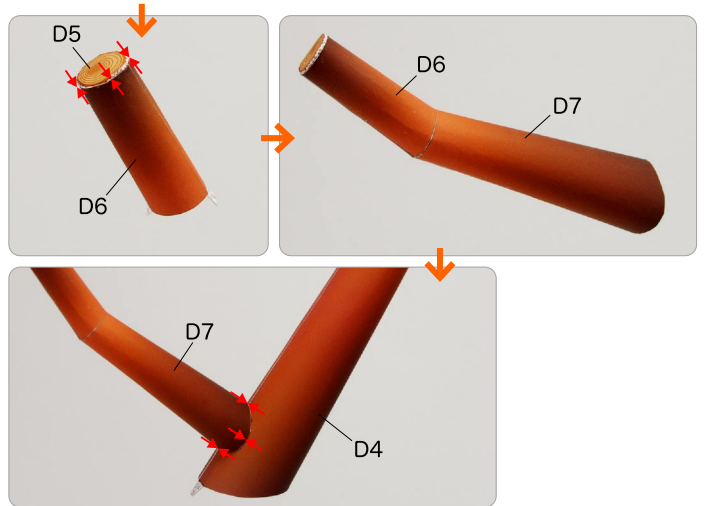
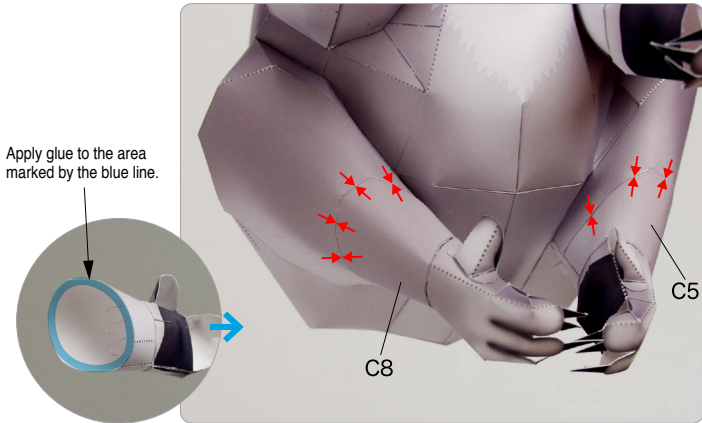
② Assemble C3 and C4, and attach them to the legs.



③ Assemble C5, C6 and C7, and attach them together. Attach C8, C9 and C10 in the same way.

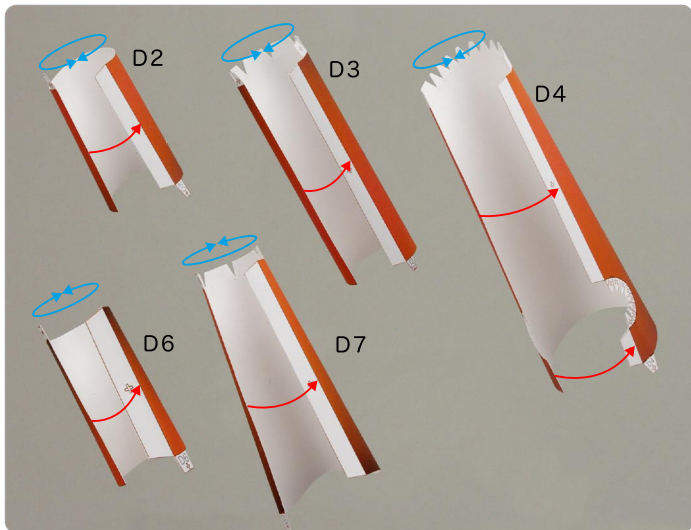


④ Attach the legs to the body, and the legs are complete.

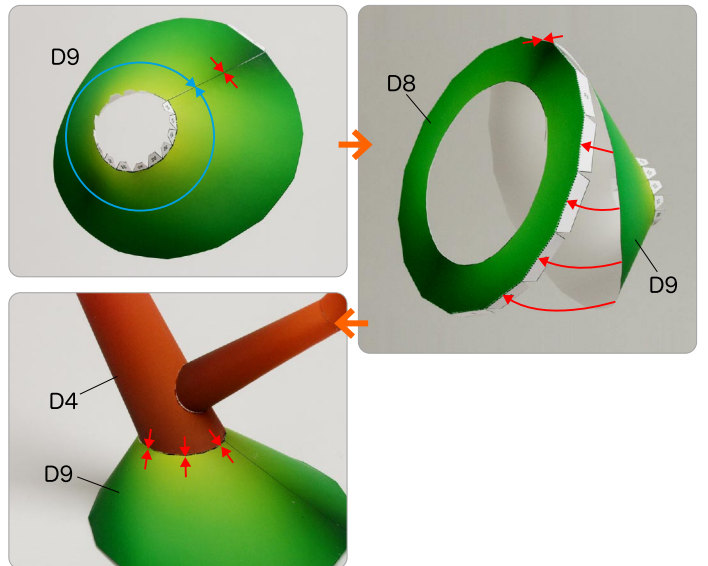


D Make the tree branch and display stand
Use pattern: Page8/Page9.

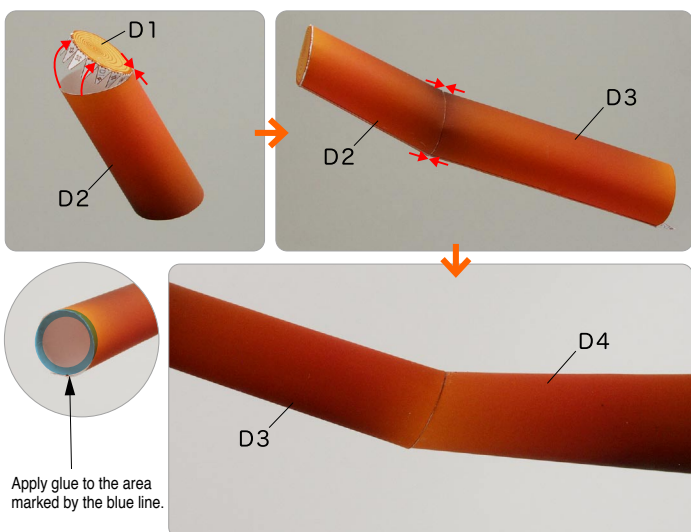
① Assemble D2, D3 and D4, and D6 and D7.



③ Attach D8 and D9, and attach D4 to them.



② Attach D1 to D7 in order.



④ Perch the koala on the tree branch, and you're done!

