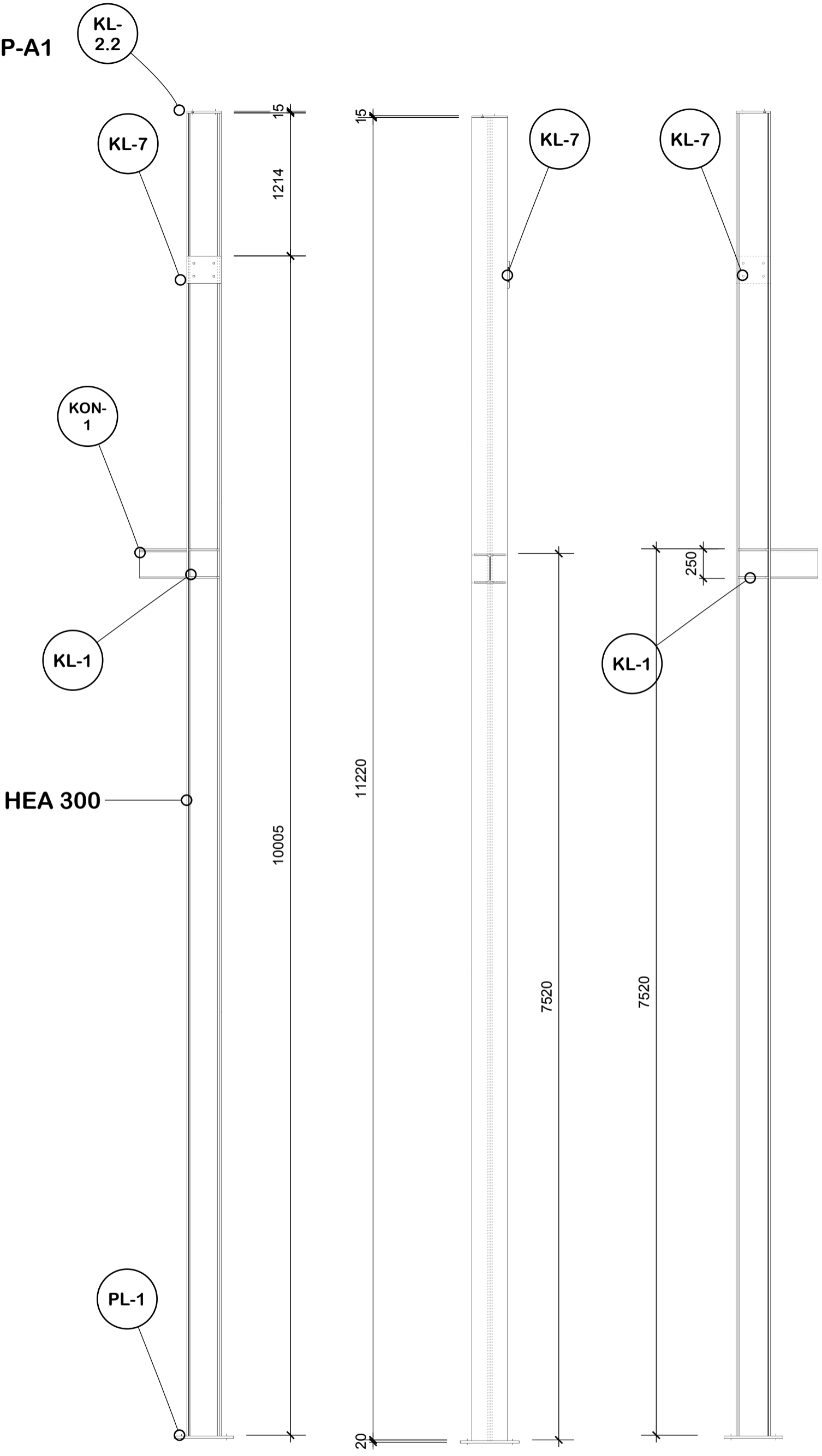


TP-A1



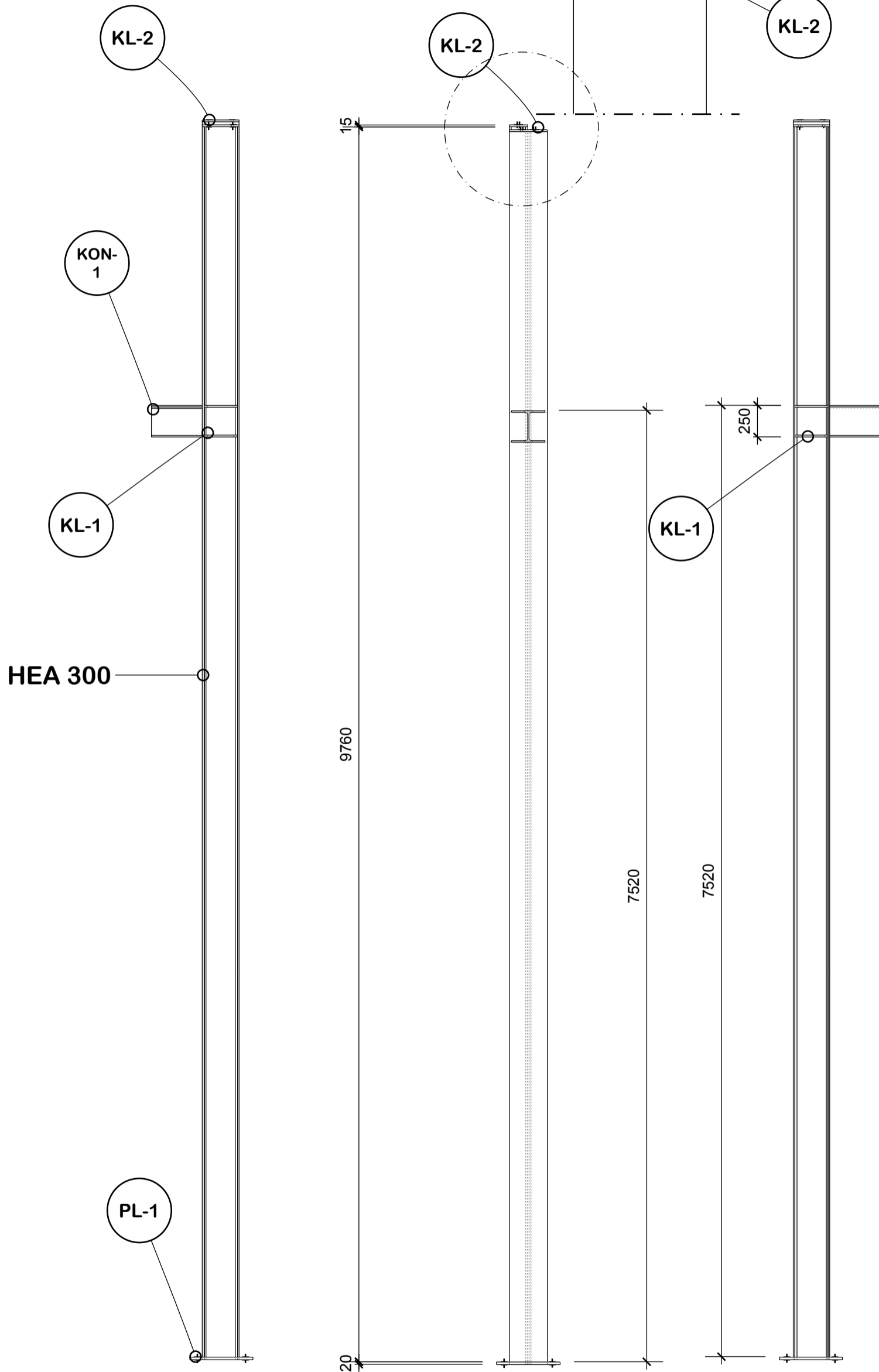
Sub-Assembly	Description	Length(L)	Width(W)	Thickness(T)
TP-A-1	PL 1	500.0	500.0	20.0
TP-A-1	HEA300A	11218.8	300.0	290.0
TP-A-1	KL-1	262.0	145.0	15.0
TP-A-1	KL-1	262.0	145.0	15.0
TP-A-1	KL-1	262.0	145.0	15.0
TP-A-1	KL-1	262.0	145.0	15.0
TP-A-1	KL-2.2	300.0	290.0	15.0
TP-A-1	KON-1	400.0	260.0	250.0
TP-A-1	KL-7	290.0	230.0	15.0



INSINÖÖRITOIMISTO

ilkka.aho@iaho.fi

TP-A2



Sub-Assembly	Description	Length(L)	Width(W)	Thickness(T)
TP-A-2	PL 1	500.0	500.0	20.0
TP-A-2	HEA300A	9740.2	300.0	290.0
TP-A-2	KL-2	300.0	290.0	15.0
TP-A-2	KL-1	262.0	145.0	15.0
TP-A-2	KL-1	262.0	145.0	15.0
TP-A-2	KL-1	262.0	145.0	15.0
TP-A-2	KL-1	262.0	145.0	15.0
TP-A-2	KON-1	400.0	260.0	250.0
TP-A-2	KL-4	290.0	15.0	15.0
TP-A-2	KL-4	290.0	15.0	15.0
TP-A-2	KL-5	290.0	145.0	15.0

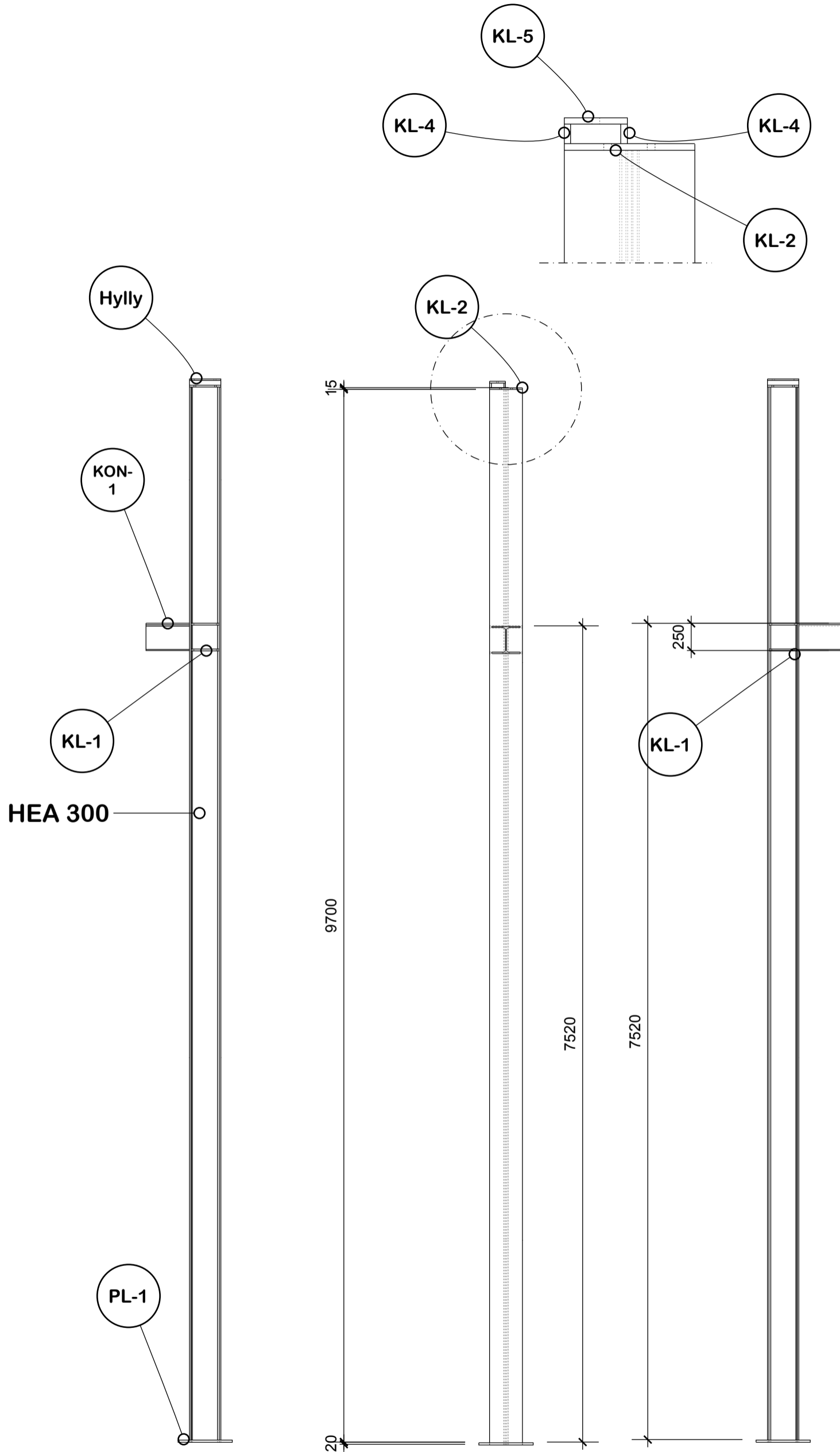
Steel frame work drawings



INSINÖÖRITOIMISTO

ilkka.aho@iaho.fi

TP-A3



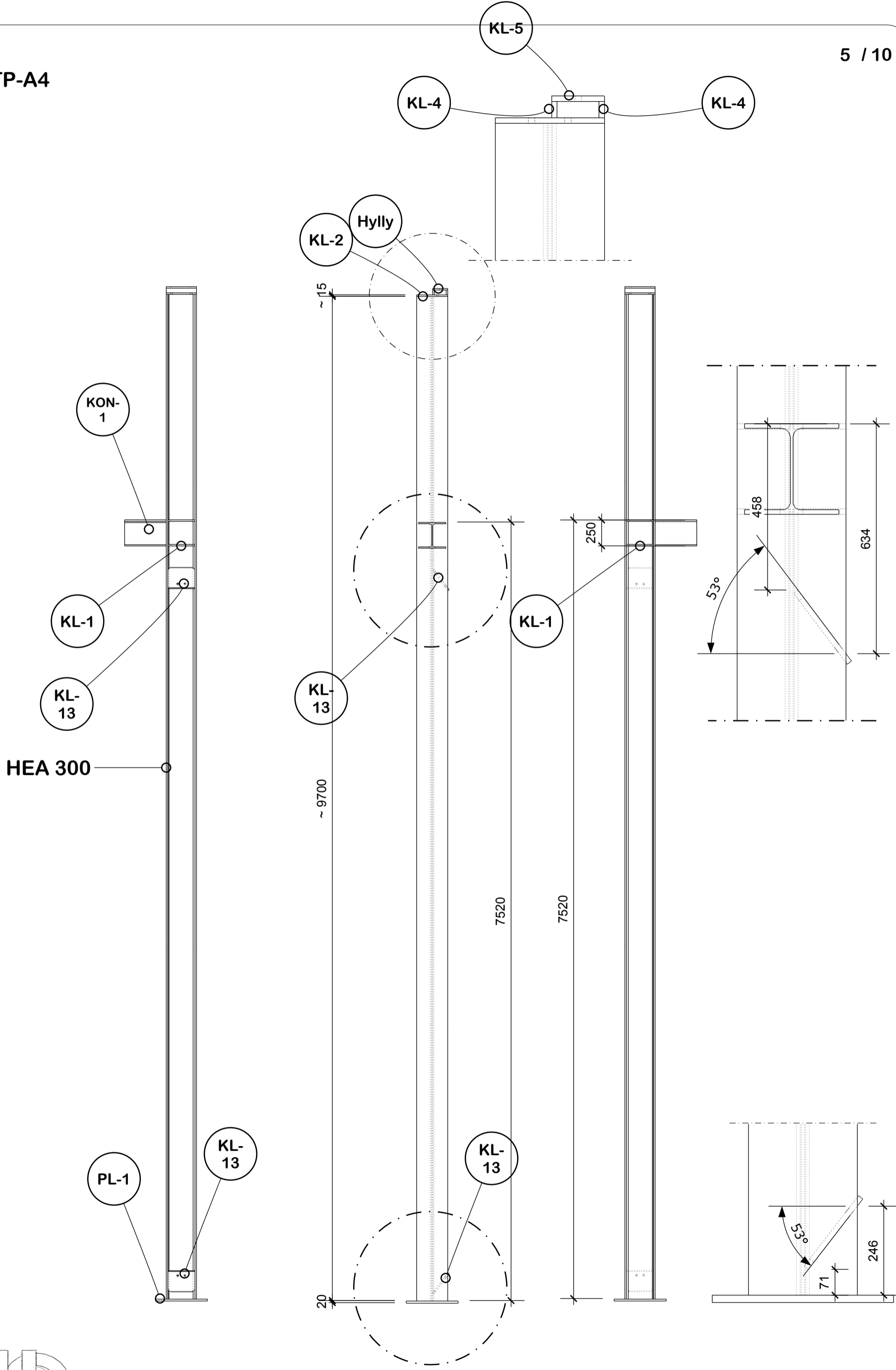
Steel frame work drawings



INSINÖÖRITOIMISTO

ilkka.aho@iaho.fi

TP-A4



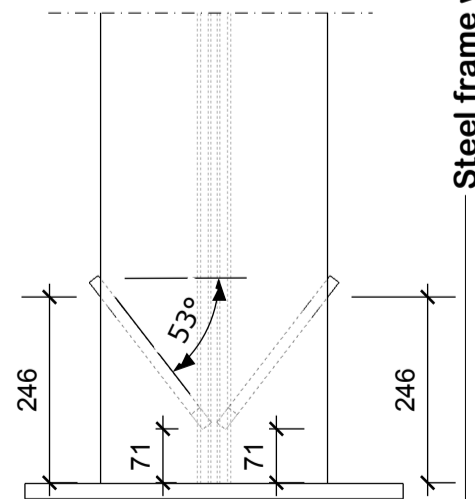
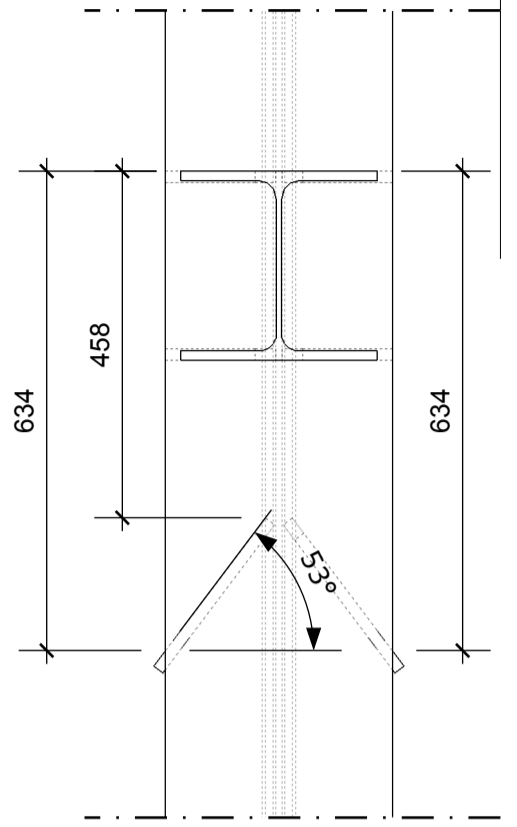
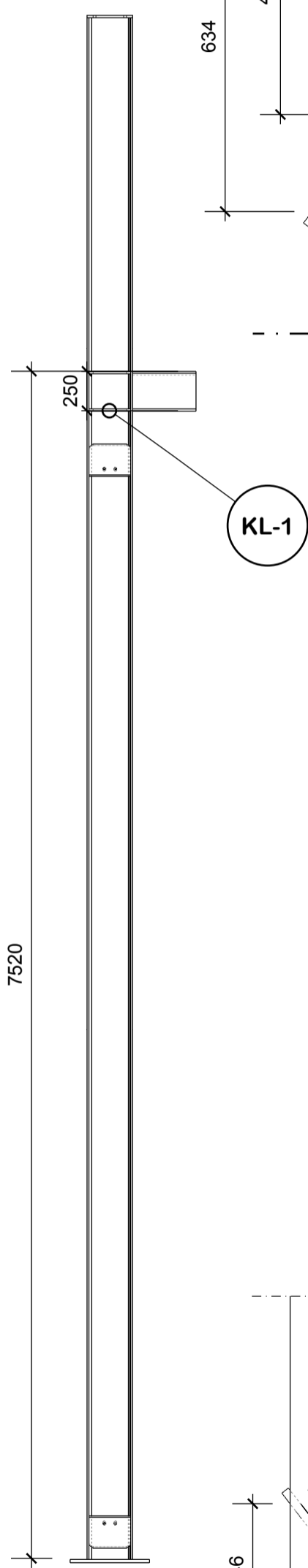
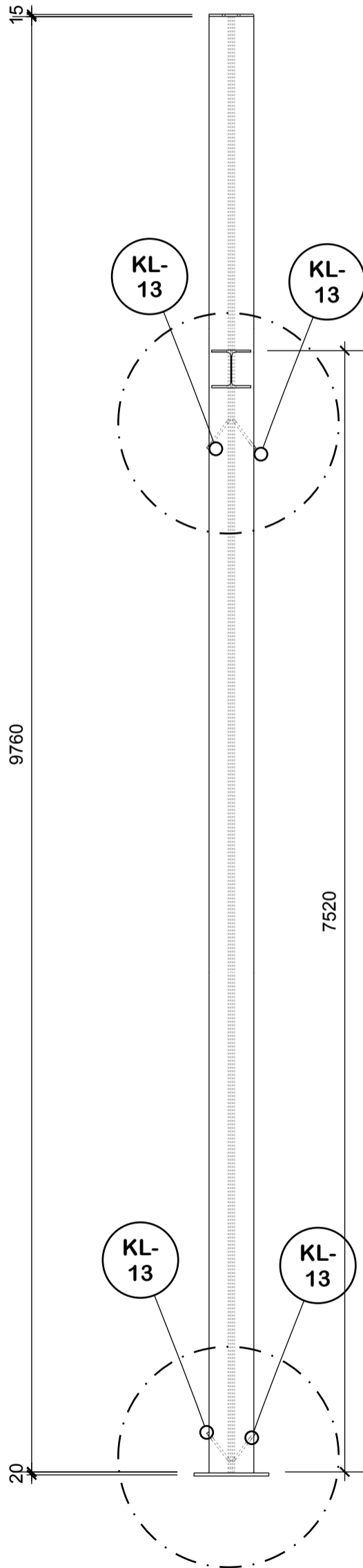
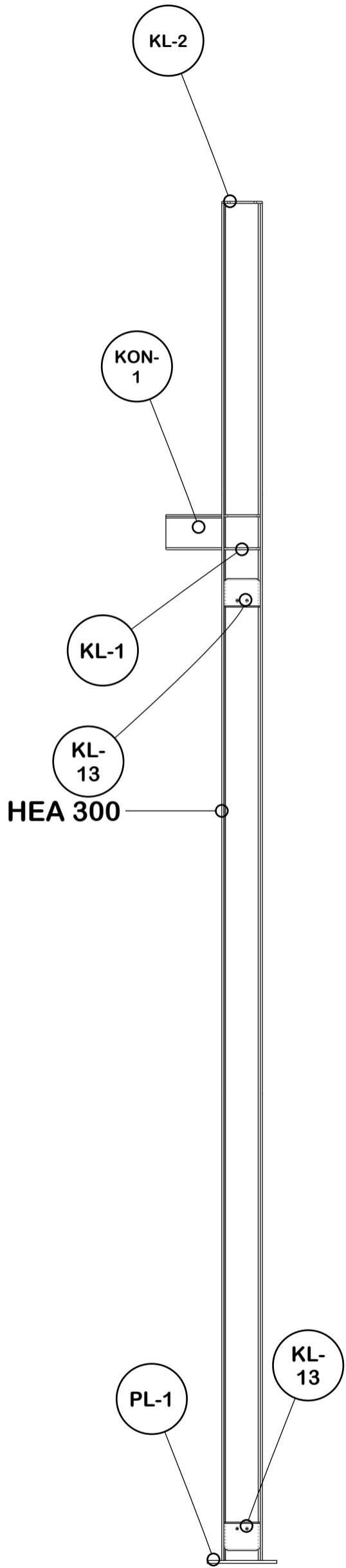
Steel frame work drawings



INSINÖÖRITOIMISTO

ilkka.aho@iaho.fi

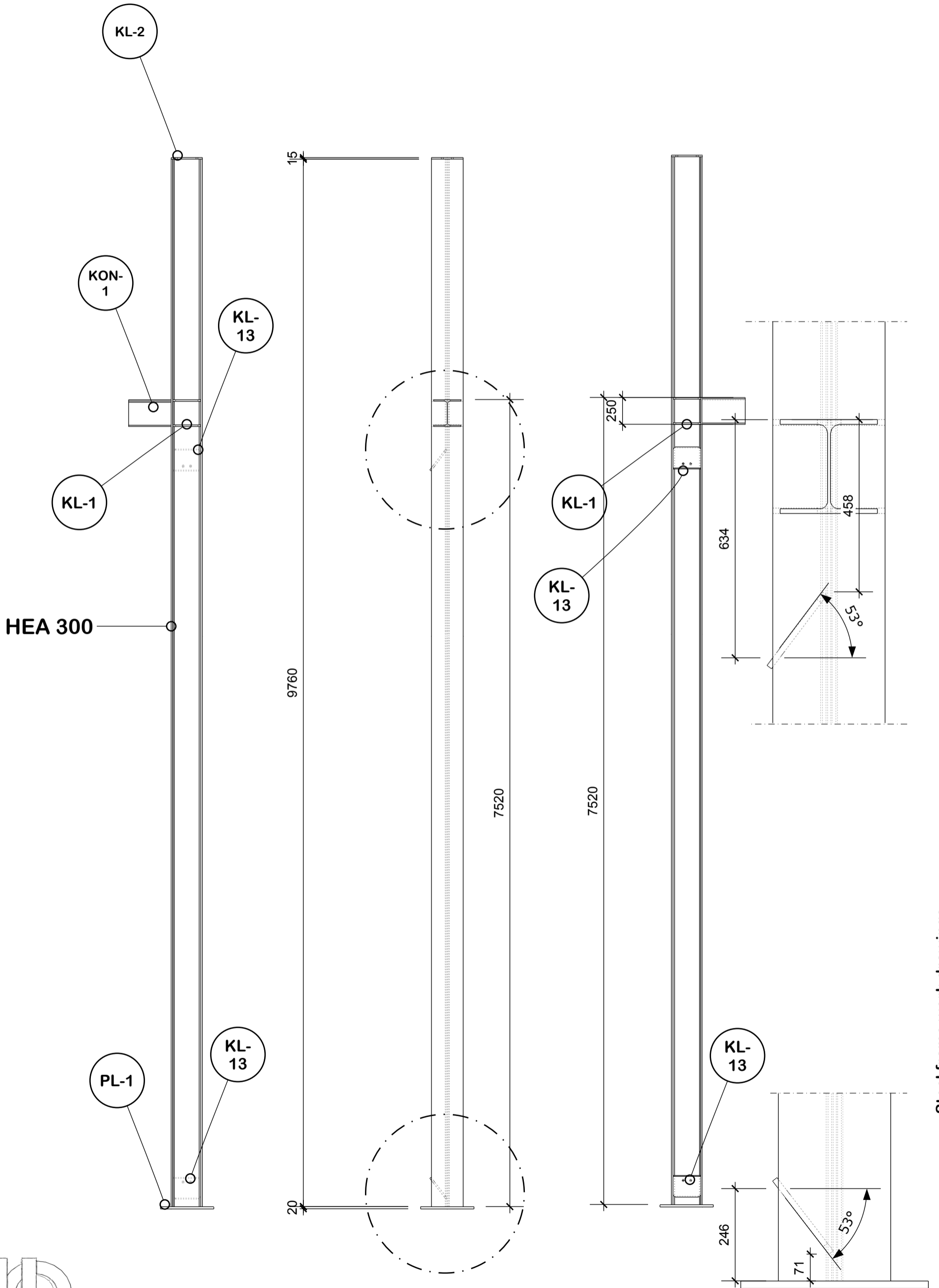
TP-A5



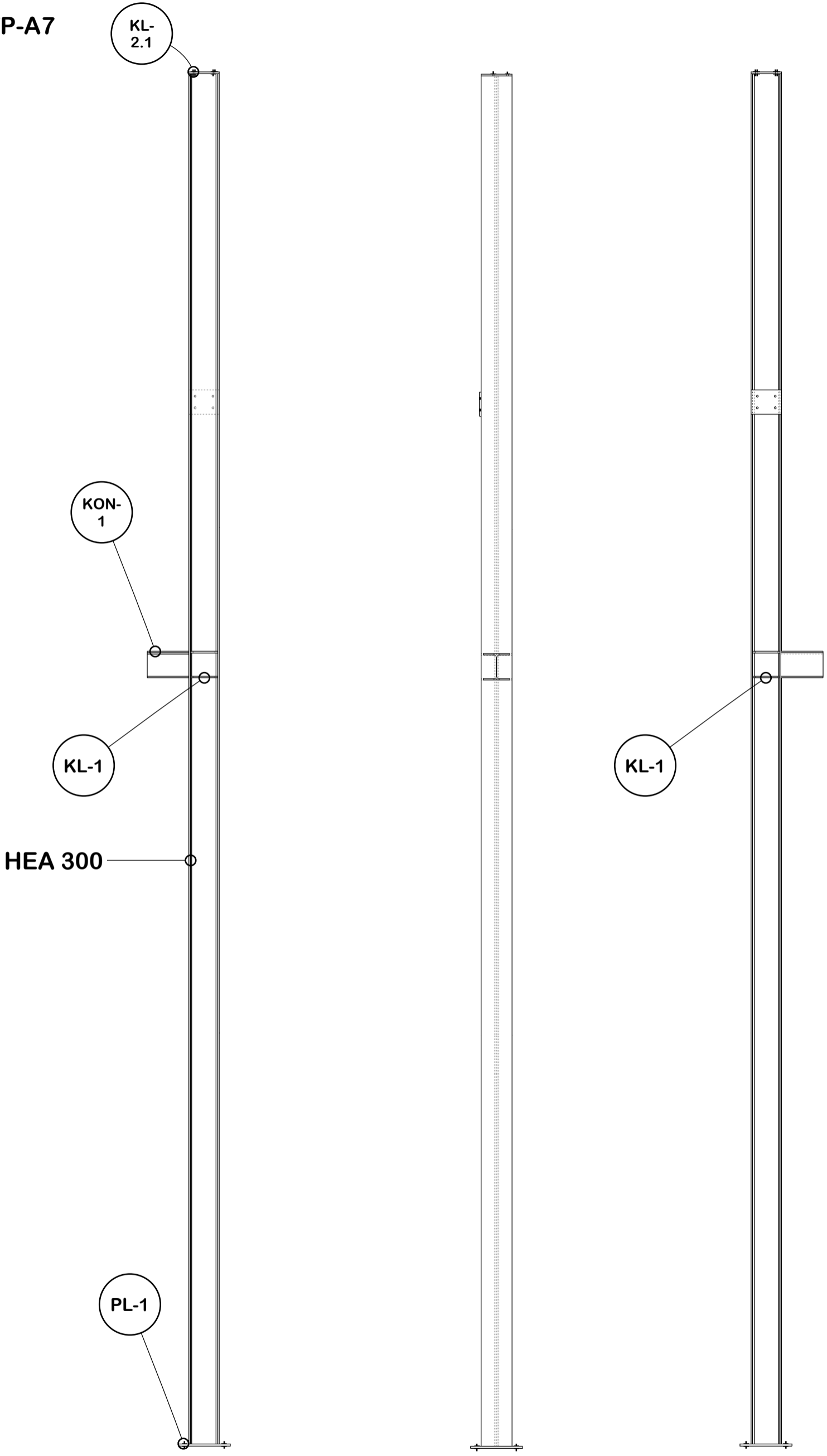
Steel frame work drawings



TP-A6



TP-A7



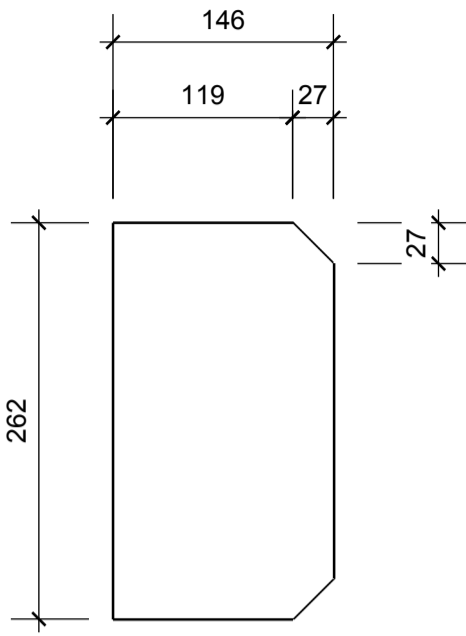
Steel frame work drawings



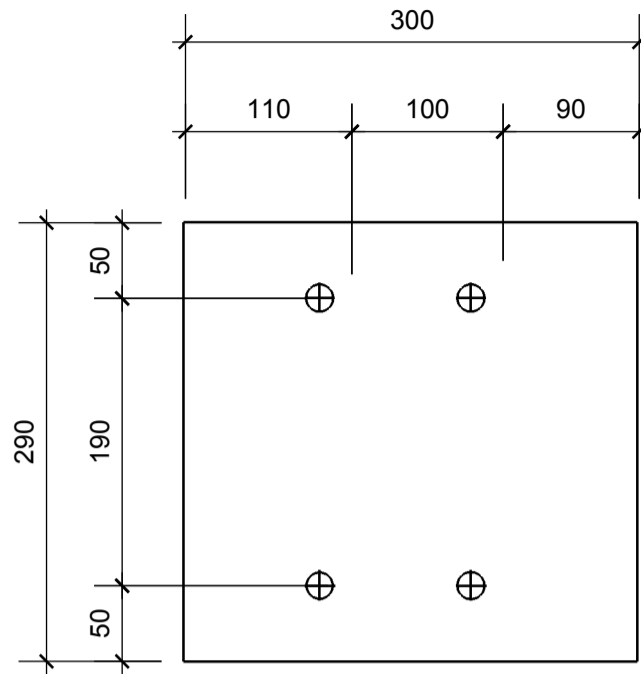
INSINÖÖRITOIMISTO

ilkka.aho@iaho.fi

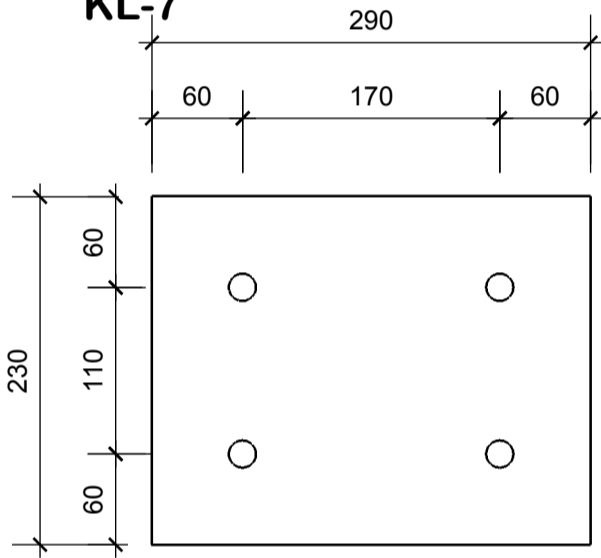
KL-1



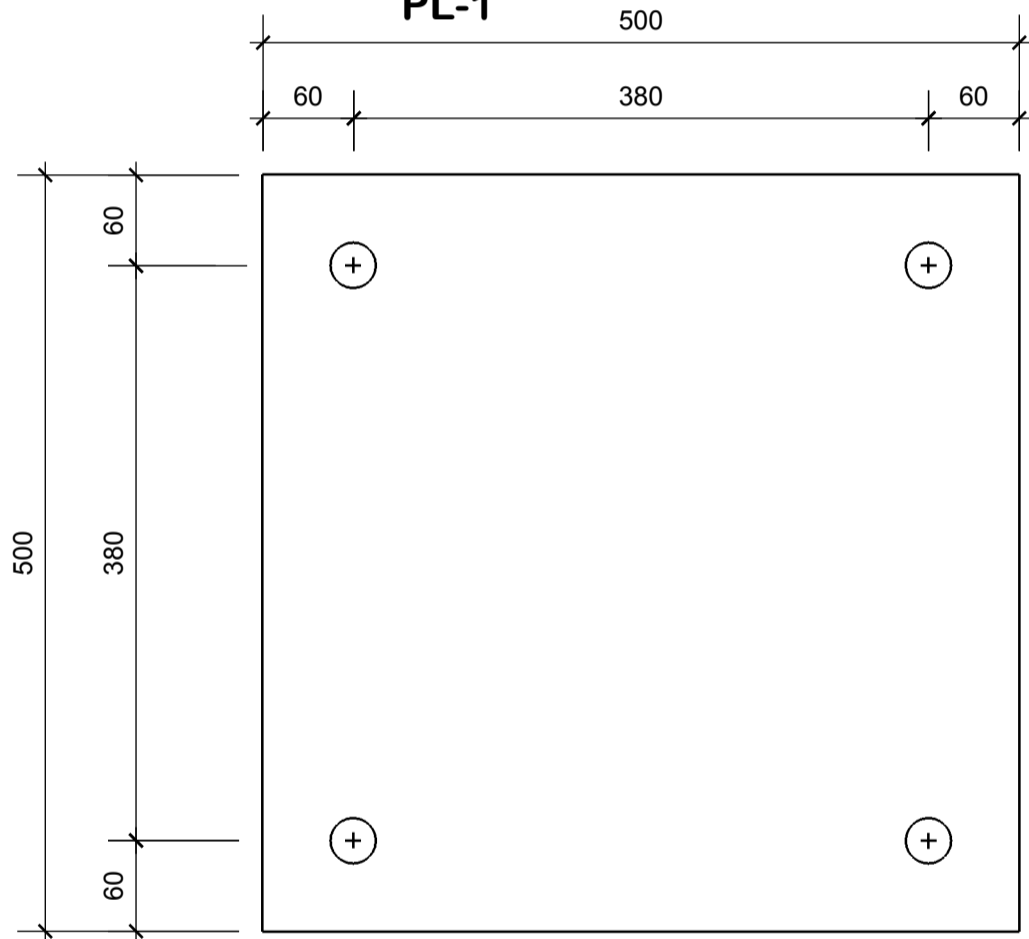
KL-2_2



KL-7



PL-1



KON-1

