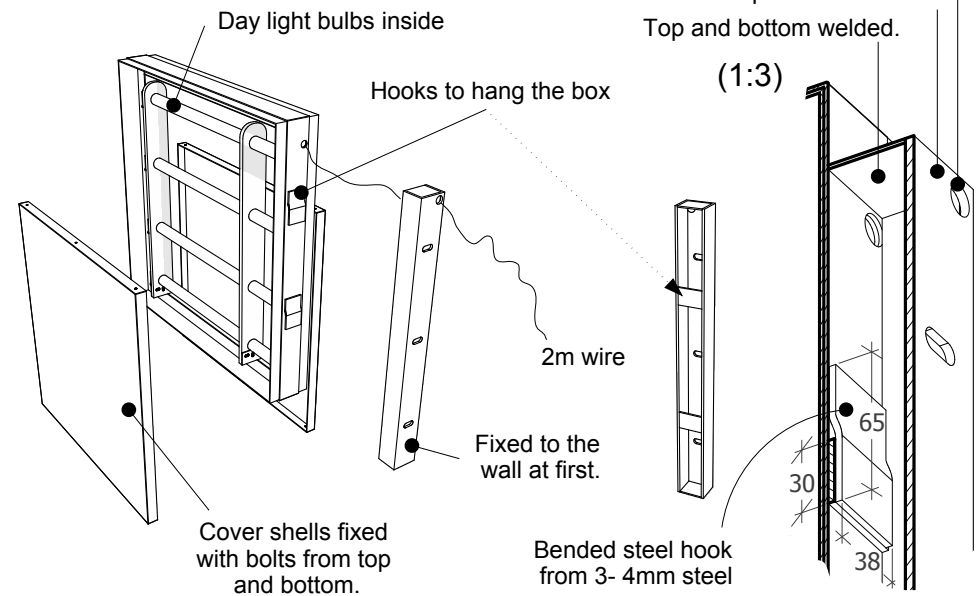
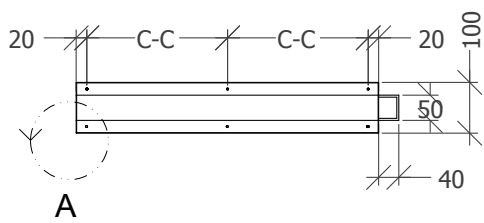


TRIM



DXF file will be available for logo and decor cutting

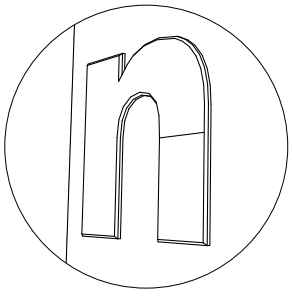


NOTES:

Material:
1,5mm steel shell, steel frame- all with galvanised zinc cover and painted black RAL 9005, gloss 25%.

Letters and flower decor cutted into the steel- white milk white plexi glass behind it.

Construction:
1,5mm steel shells fixed with screws to the steel frame. Steel frame hanged onto the wall fixing box which is fixed with crews to the wall. 2m long wire must be included.



Big "NU" letters raised outside for 5mm . Letters have a small chamfer by perimeter.

