

Building Blocks Inc.
1621 West Carroll Ave
Chicago IL

**Job: Chicago Woman's Park - GFRC
Terra Cotta Keystone
Replacement**

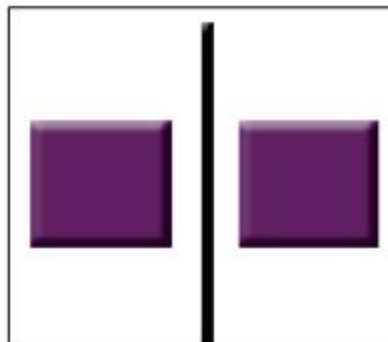
Drawings:

- 001: Cover Sheet
- 100: Perspective Views and notes
- 101: Details

Piece Count
Base Bid Piecs - 17
Per Drawing Set- 17
Mold Count
Base Bid - 1
Per Drawing Set- 1

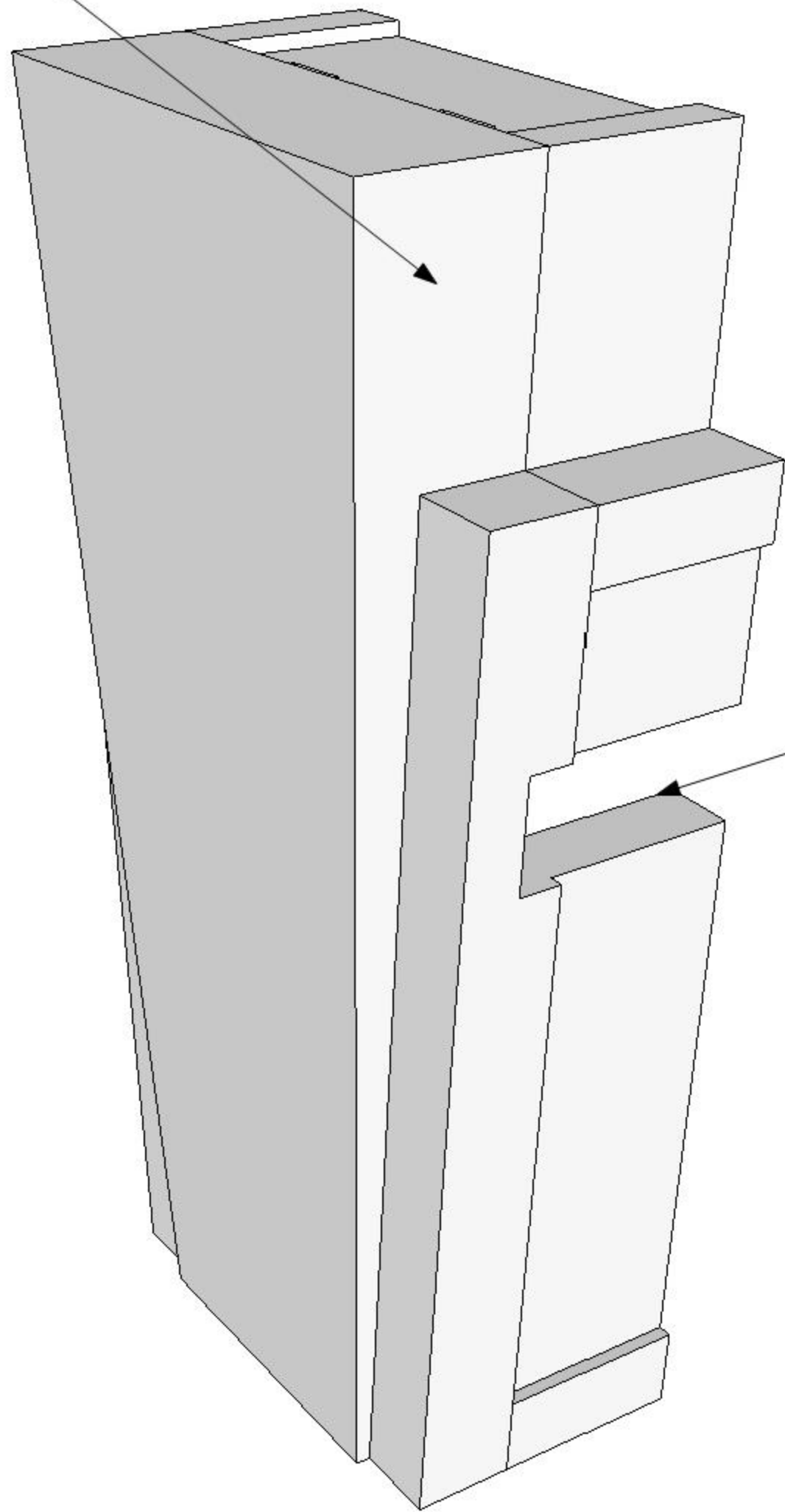
Drawing Record
Drawing Submittal - 4/26/2013

- General drawing notes:
- 1) Exterior wall to be 1 1/2" thick
 - 2) Interior (cell) walls to be 1" - 1 1/4" thick
 - 3) Locate mortar pockets as indicated in drawings
 - 4) Mortar pockets to be 1/8" - 1/4" deep unless otherwise noted
 - 5) Profiles and finishes to match suplied fragmetns unless otherwise noted



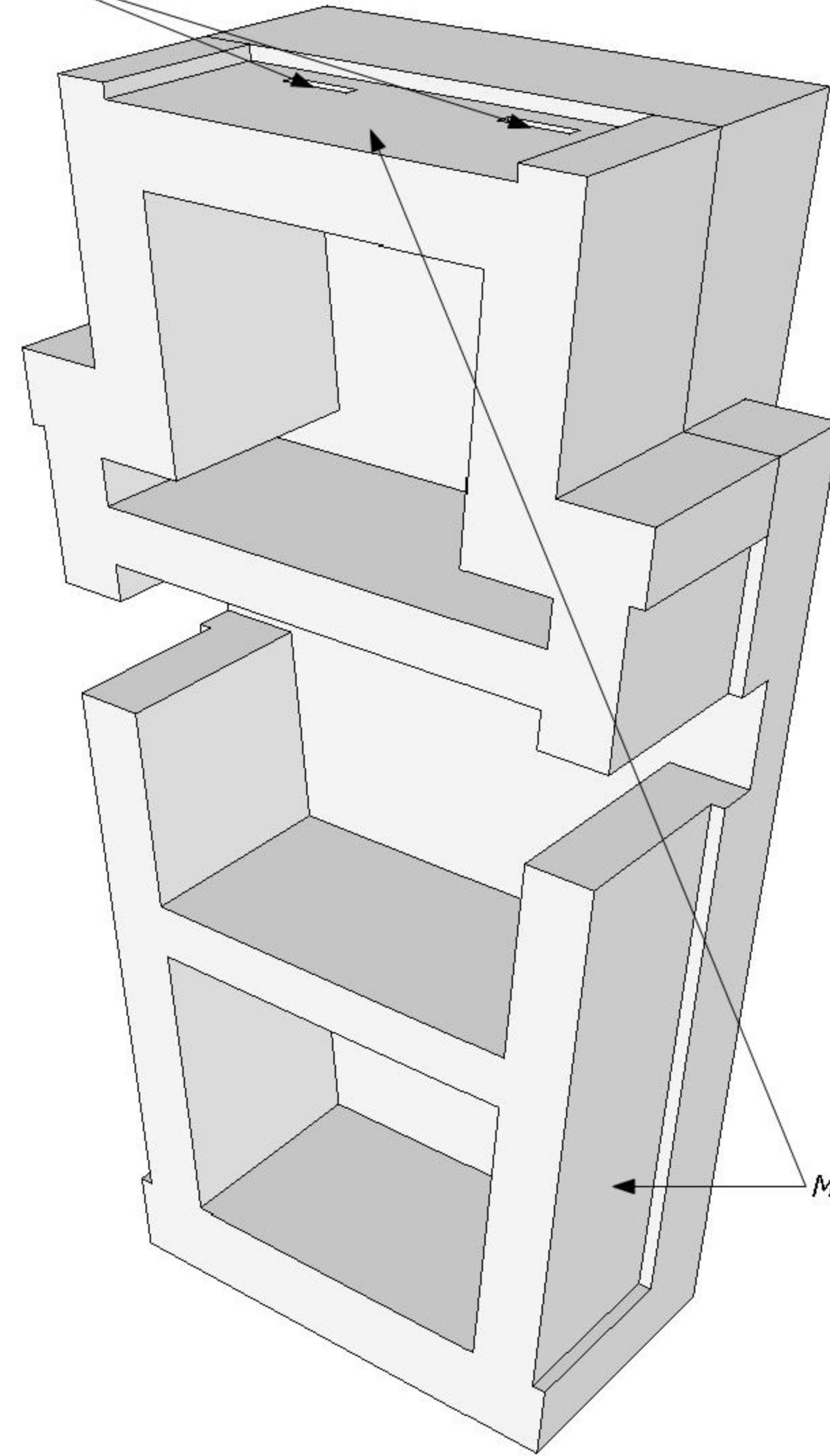
Quantity - 17 pieces

See fragment for
finished/exposed surface
on sides of piece

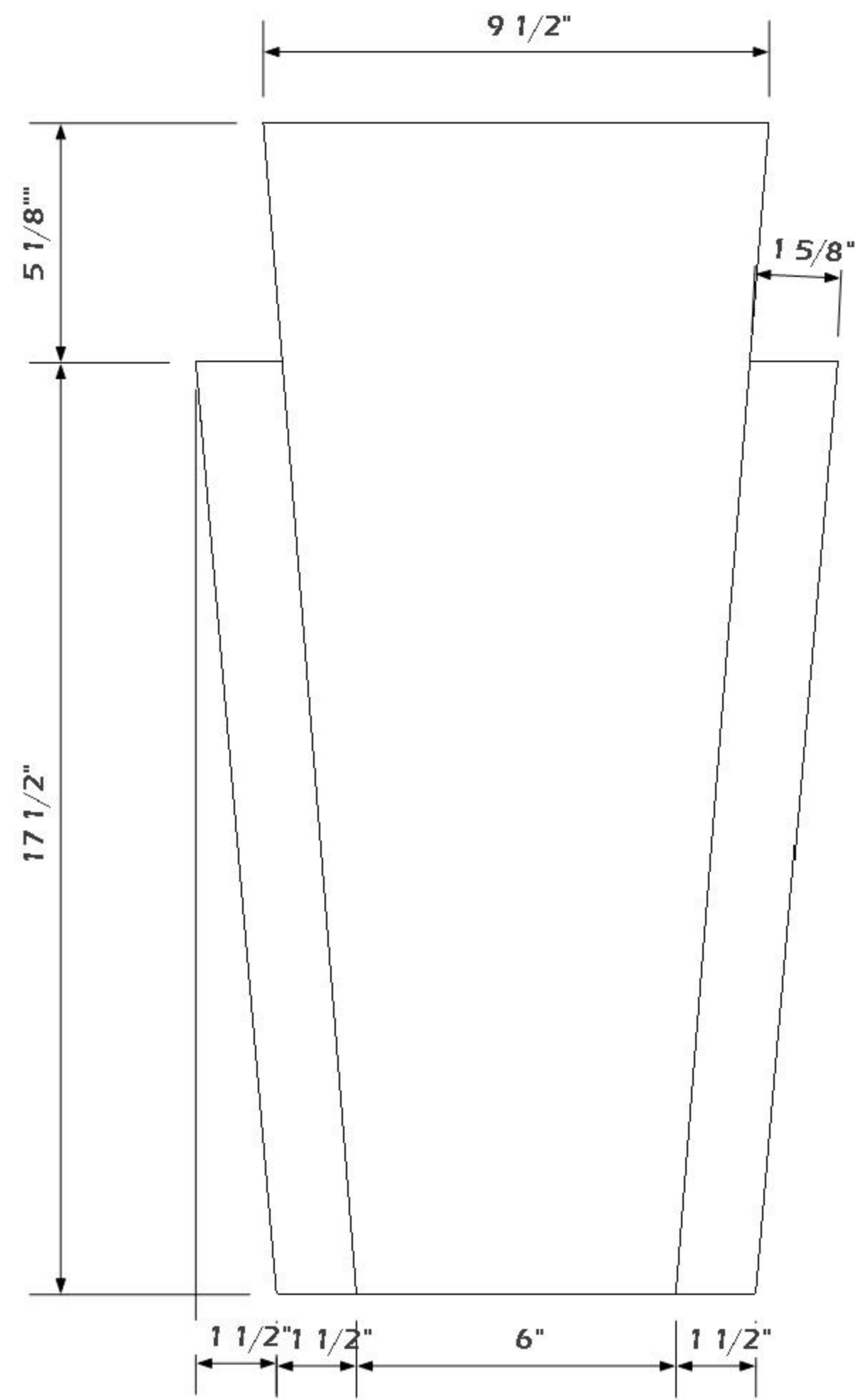


Contractor to advise
on notchout requirements.
Drawing reflects the provided
fragment

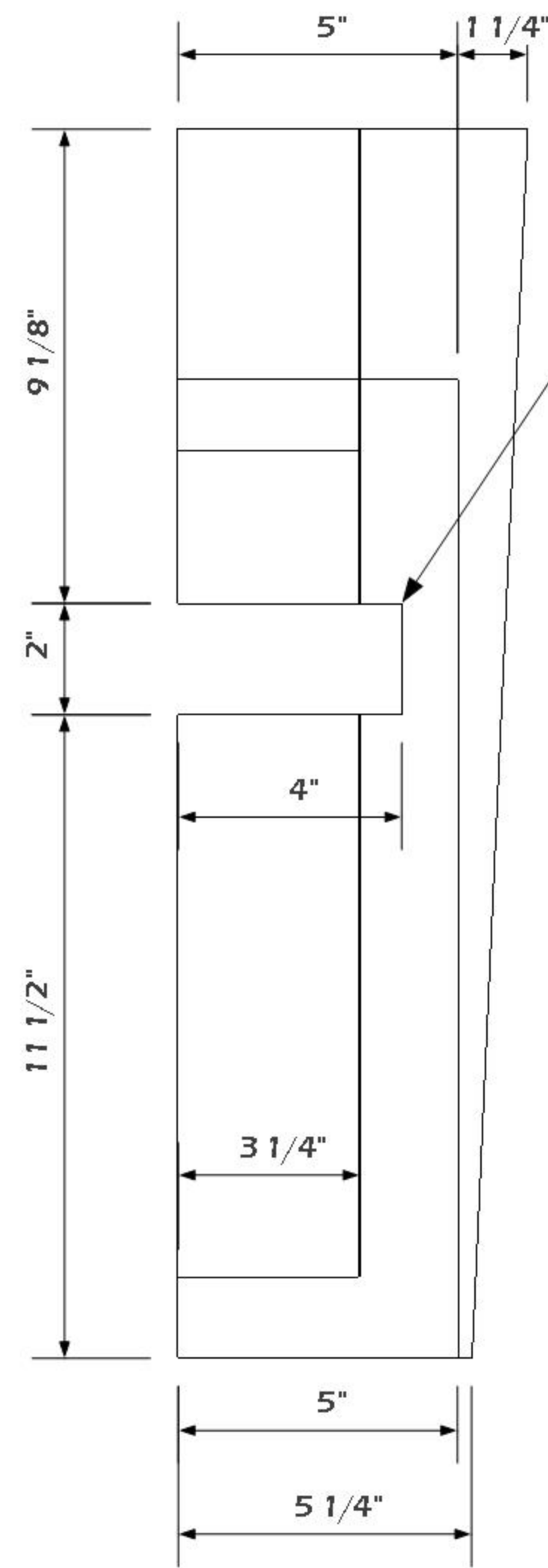
Strap notchout locations
per fragment



Mortar pockets

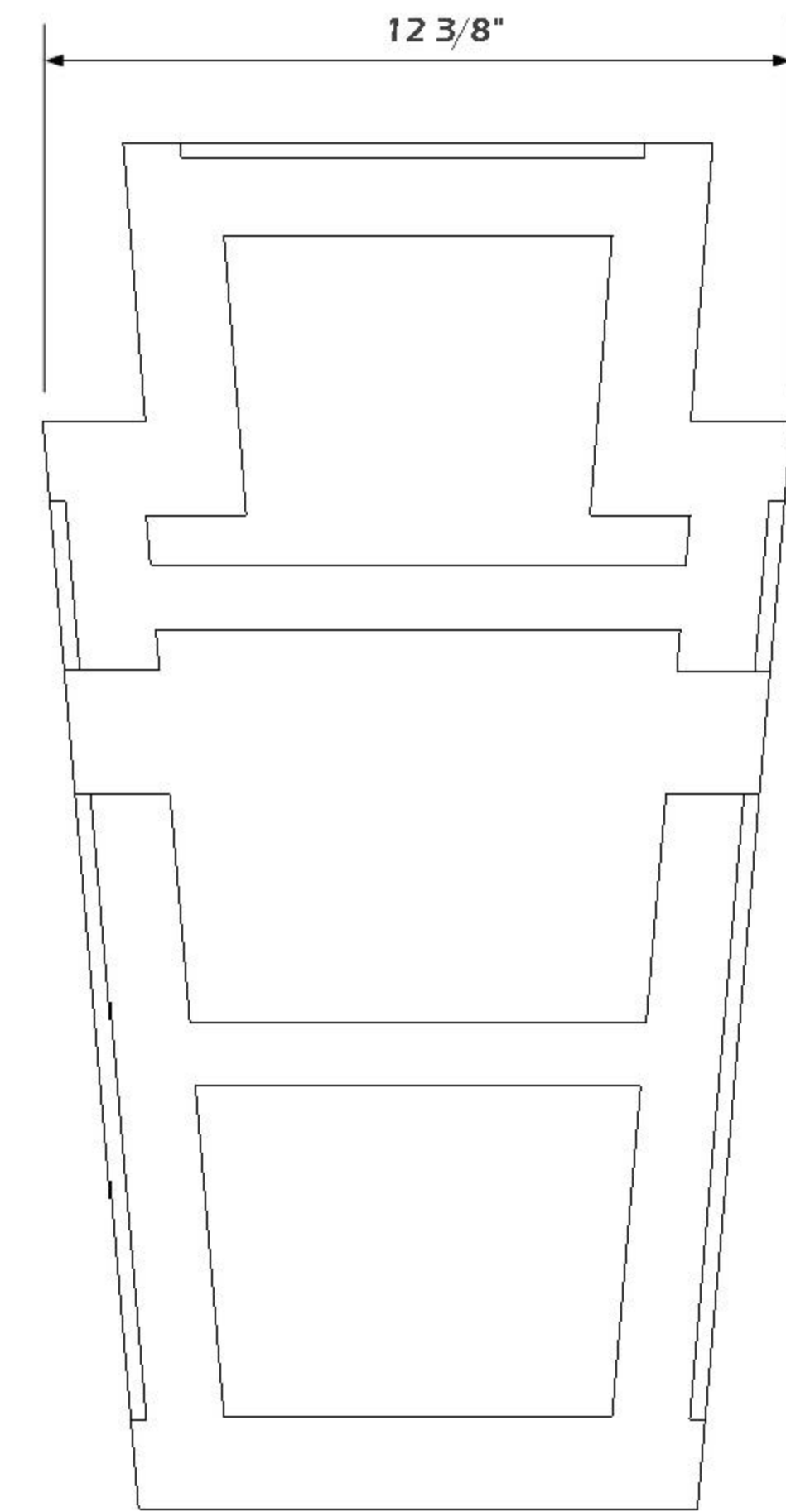


A :: Front View
101 scale: 3"=1"

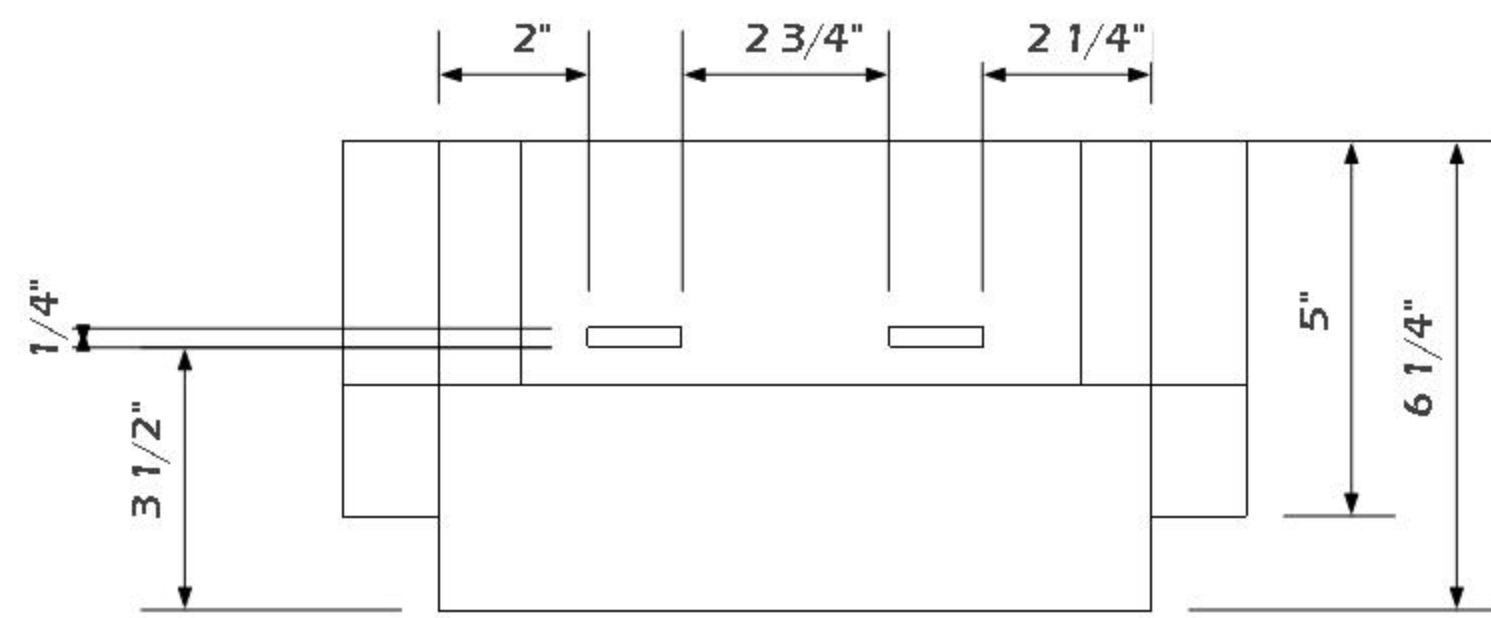


B :: Left Side
101 scale: 3"=1"

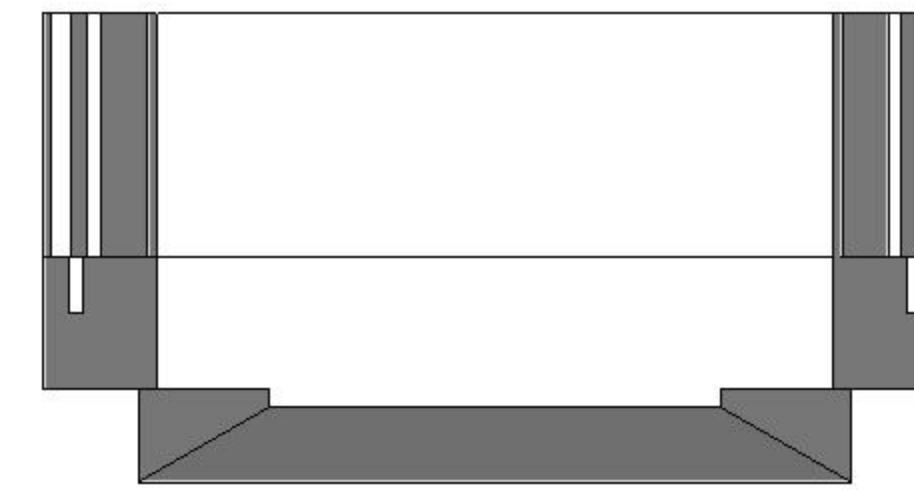
NOTE: per fragment provided, steel notchout extends past exposed surface.



C :: Back View
101 scale: 3"=1"



D :: Top View
101 scale: 3"=1"



E :: Bottom View
101 scale: 3"=1"