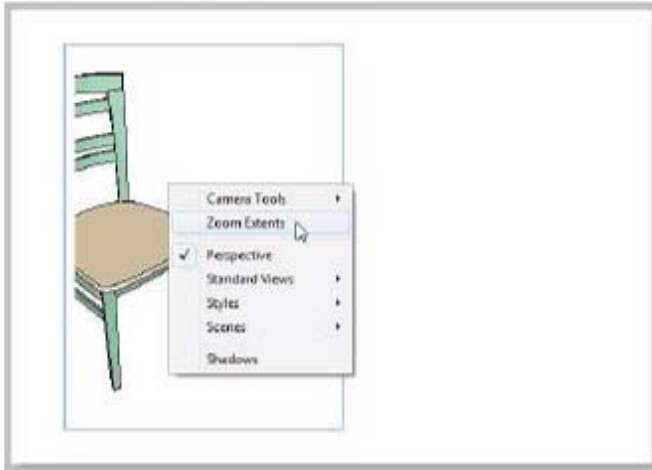
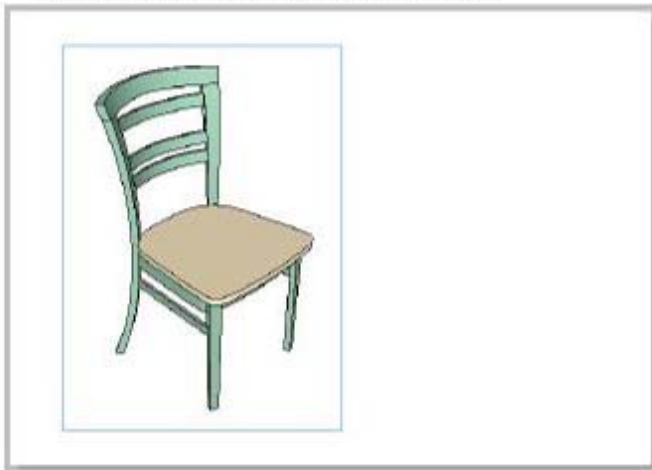


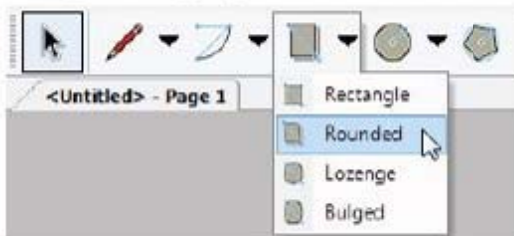
14. Double-click the chair again, then right-click on it and choose **Zoom Extents**.



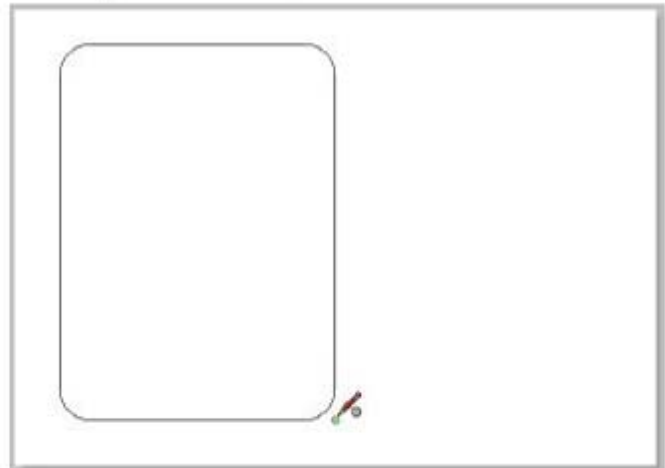
This fits the chair within its rectangle.



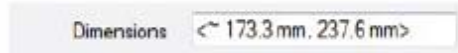
15. Click outside the rectangle to complete the view.
 16. Next we'll create a border around the chair. Click the **Rectangles tool group**, and choose **Rounded**.



17. Click two opposite corners to draw a rectangle with rounded corners. Either before clicking the second corner point, or just after clicking it, you can adjust the rounding radius by pressing the Up or Down arrow keys. Make sure the rectangle completely covers the chair. The default rectangle style for this template has a black border and solid white fill.



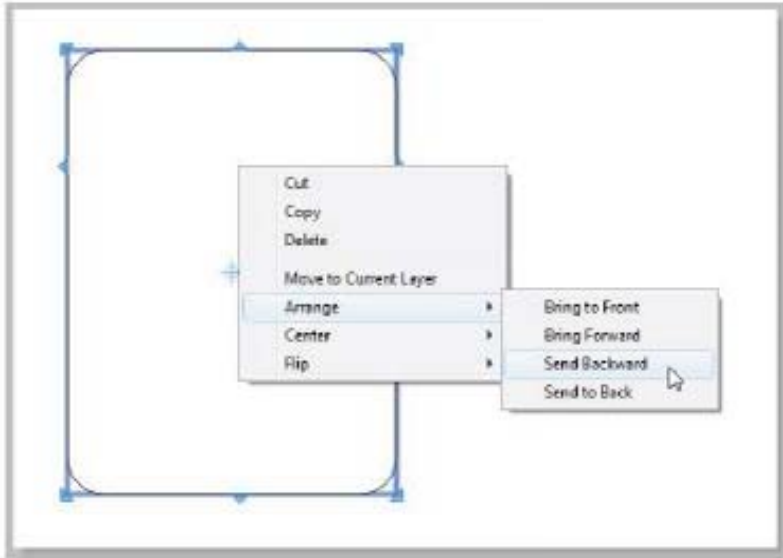
*NOTE: While creating the rectangle, the **Dimensions** field appears below the LayOut window. Just like in SketchUp, if you have specific lengths in mind, just type them, separated by a comma, and press Enter. If you press the Up or Down arrow key, you can adjust the corner radius.*



If you want to enter an exact corner radius value, enter the number followed by the letter R, for example "10r."

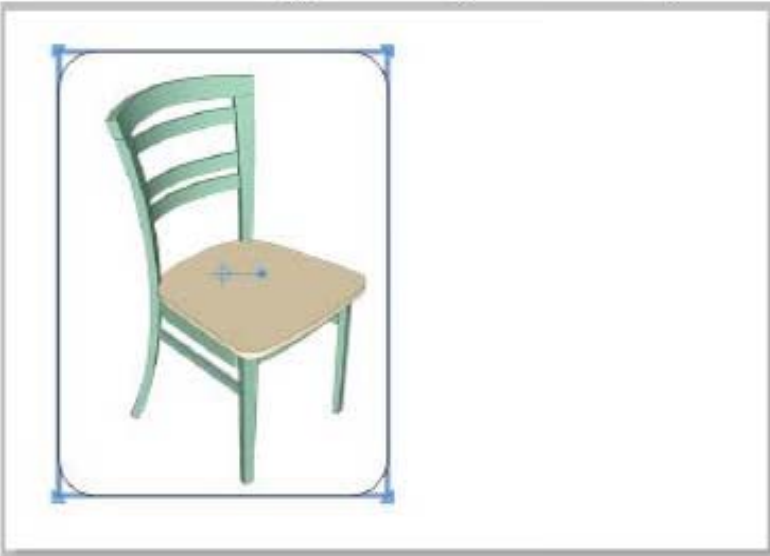
I'm trying to work through this example. A chair is brought into Layout, it's moved to the left side of the sheet, as rounded shape is

18. LayOut objects are stacked vertically, with the most recently-created object on “top.” To move this new rectangle below the chair, first select it. Then right-click on it and choose **Arrange / Send Backwards**.

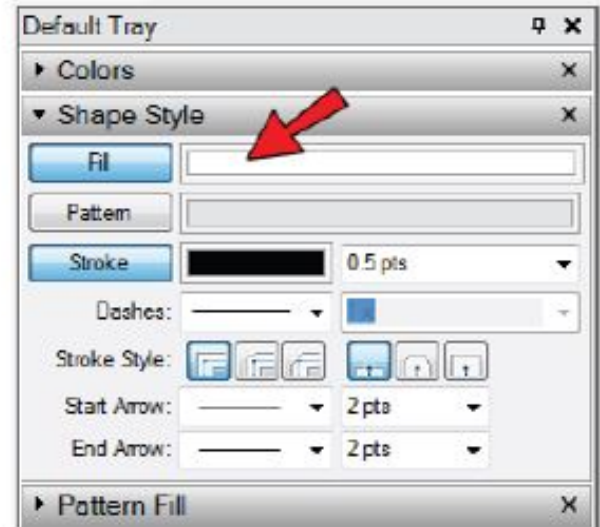


TIP: You can set keyboard shortcuts for the **Arrange** tools, such as **Align**, **Space**, **Center**, etc. (In fact you can set shortcuts for any tools you use often.) See “Preferences” on page 19.

Now the chair appears on top of the rectangle.

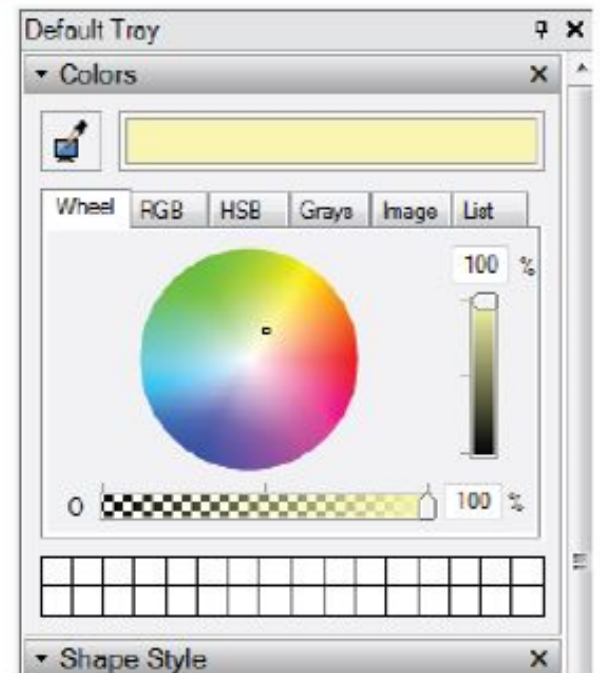


19. The rectangle should still be selected (select it again if it’s not). Then open the **Shape Style** tray on the right side of the LayOut window. By default, **Fill** and **Stroke** are turned on (their buttons are enabled) and **Pattern** is not. The default fill color is white; click the color box to change it.



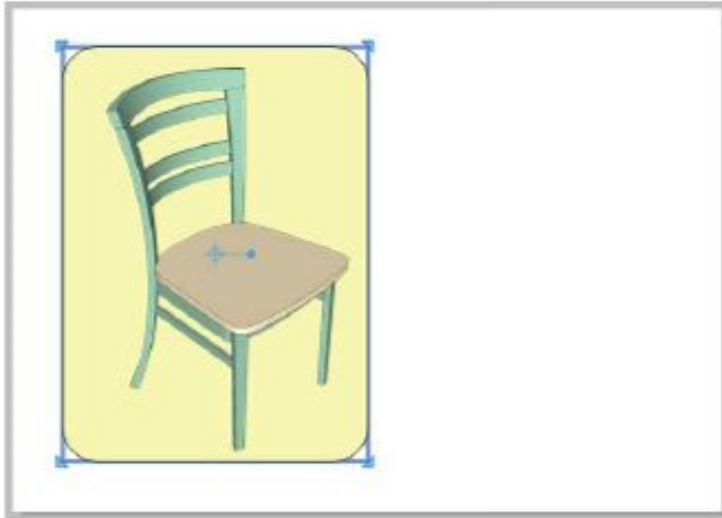
NOTE: Most of the LayOut trays should be visible on the right side of the window. If you need to access a particular tray that’s not displayed, you can control tray visibility from the **Window** menu. Also, you can minimize a tray by clicking its title bar, or close it by clicking its “X” icon.

20. This opens the **Colors** tray (PC) or the **Colors** window (Mac). Use any color picking method (color wheel, RGB, etc.) to choose a light, neutral fill color.

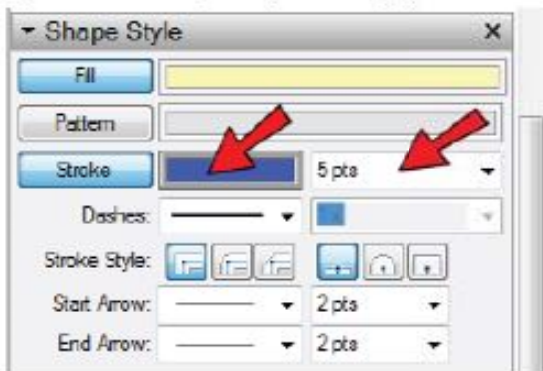


Mac users: Either close the **Colors** window when finished, or leave it open but click the **Fill** color box again to deactivate it.

The rectangle should now have the new fill color.



21. With the rectangle still selected, go back to the **Shape Style** tray and choose a new color for **Stroke** (the rectangle border). Also, increase the line weight by choosing a pre-defined weight from the drop-down menu, or by entering your own.



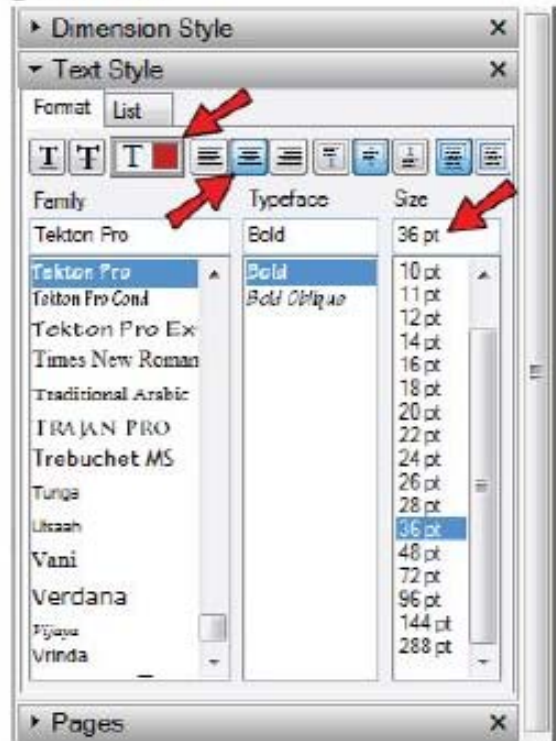
22. Click outside the rectangle; here's how it should look:



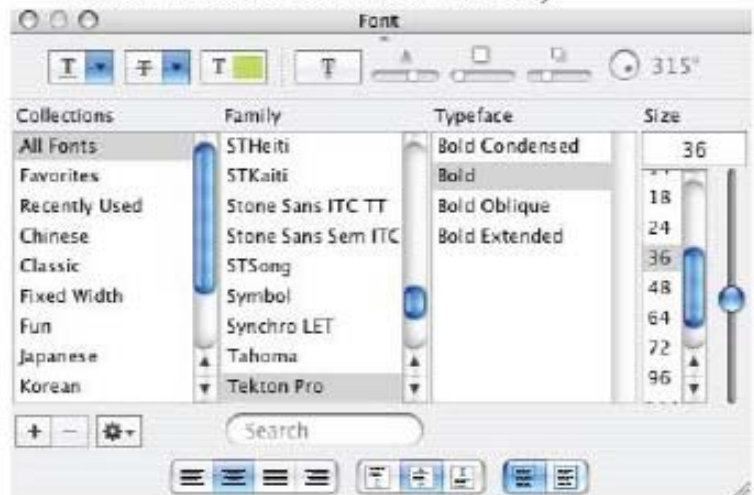
23. Next we'll add some text. Click the **Text** icon.



24. PC: Open the **Text Style** tray and choose a font, typeface, and size (36 pt is a good size here). Set the text color by clicking the color box, and also set it to **Align Center**.



*Mac: Choose **Window / Show Fonts** (Cmd + T) to display the **Font** window. As above, choose a font, typeface, size, and color, and click **Align Center** at the bottom. (You can leave the **Font** window open, but if you do, be sure to click inside the LayOut window to make that window active.)*

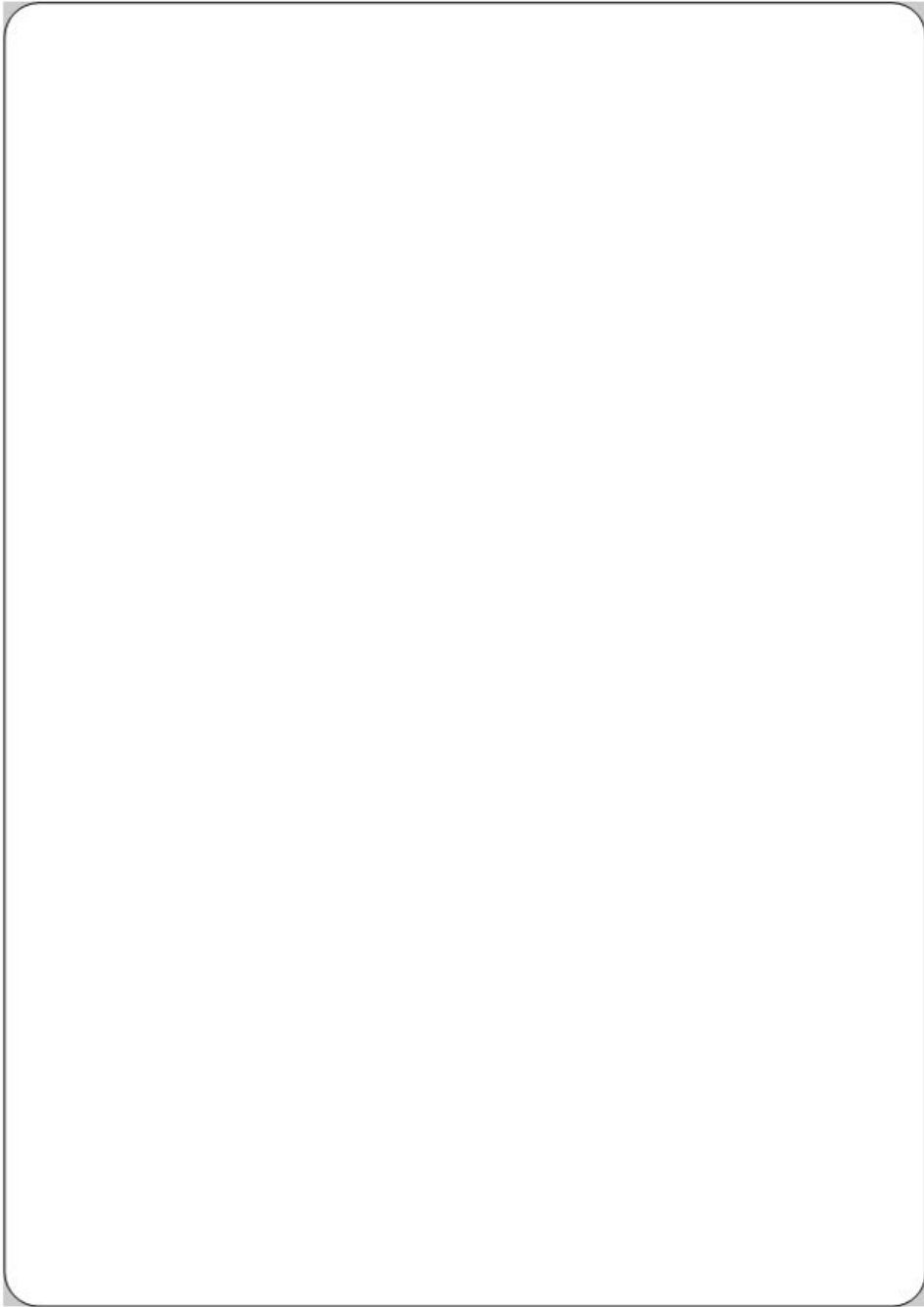




this is the model I brought into Layout from SU 2013. I preset a white background before sending it to Layout.



when I click outside the rectangle as per item 15 in the book, I get this gray tone background, which gets in the way of next steps.



I've inserted a rounded rectangle shape over the chair. The grey tone in is visible behind at the corners



Then I sent the rounded rectangle backwards, but it's obscured by the gray tone. Is there a setting that prevents the grey tone from appearing?