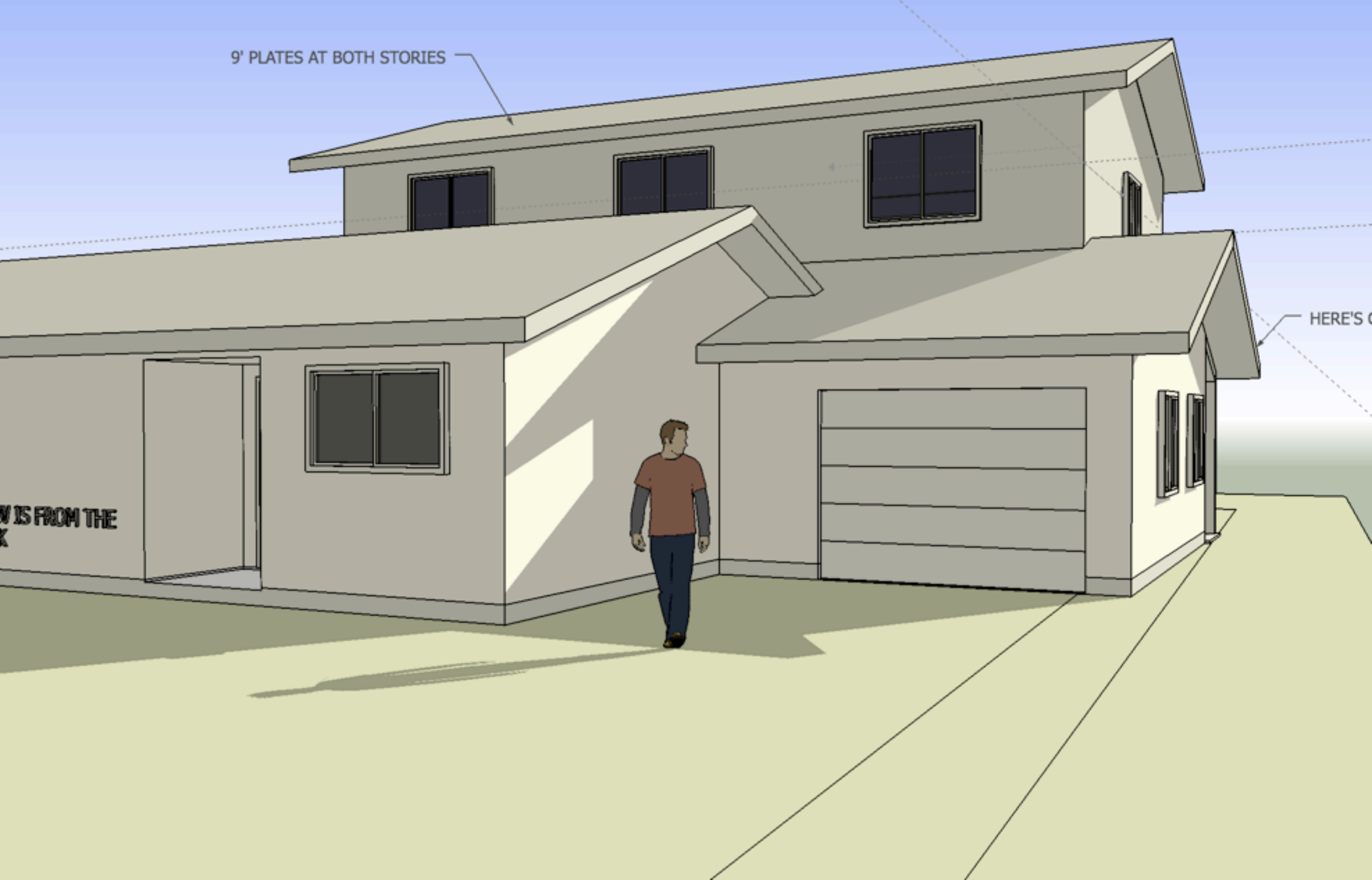


9' PLATE ONLY AT
SECOND STORY

HERE'S C

W IS FROM THE
K

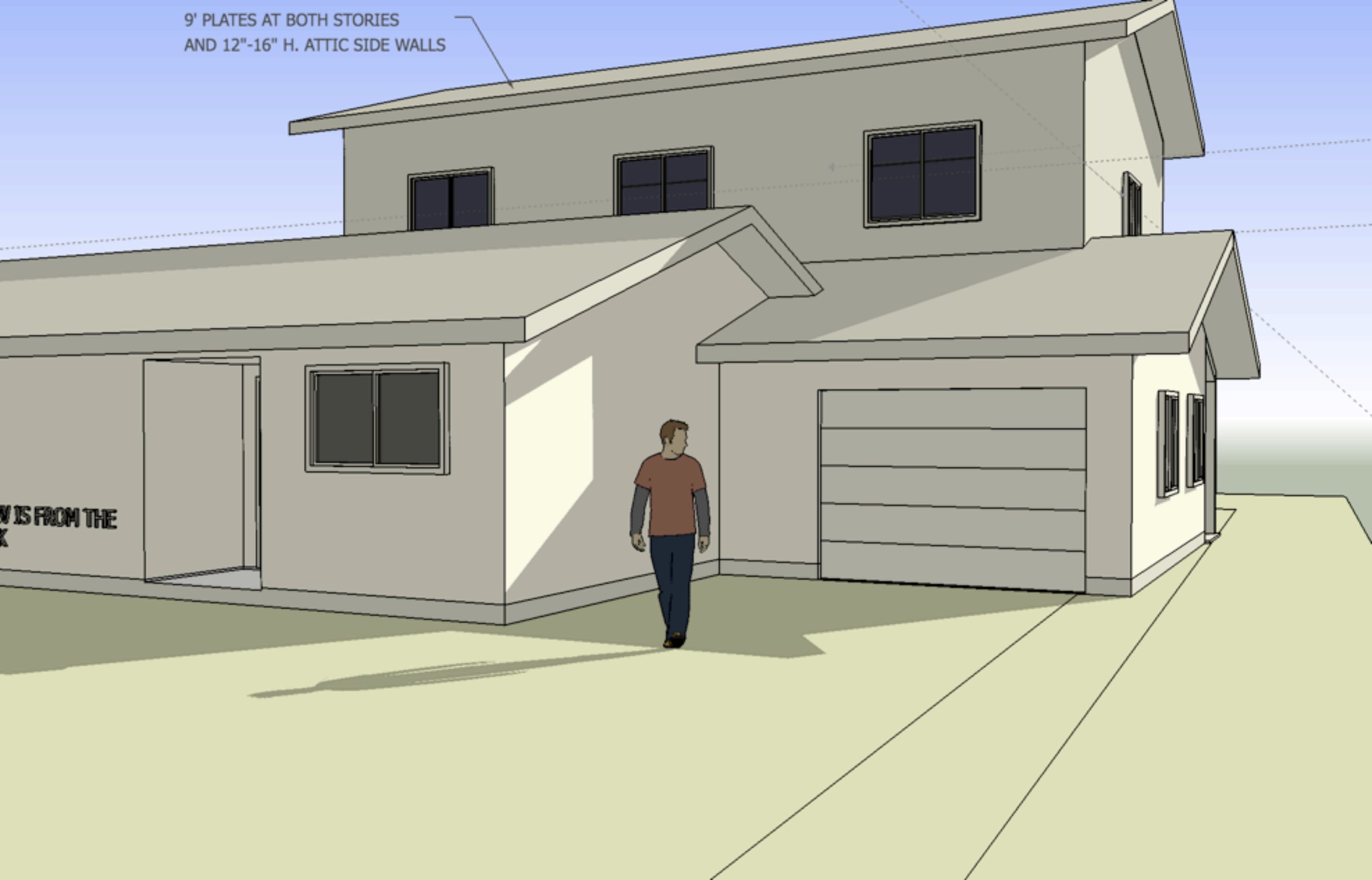
9' PLATES AT BOTH STORIES



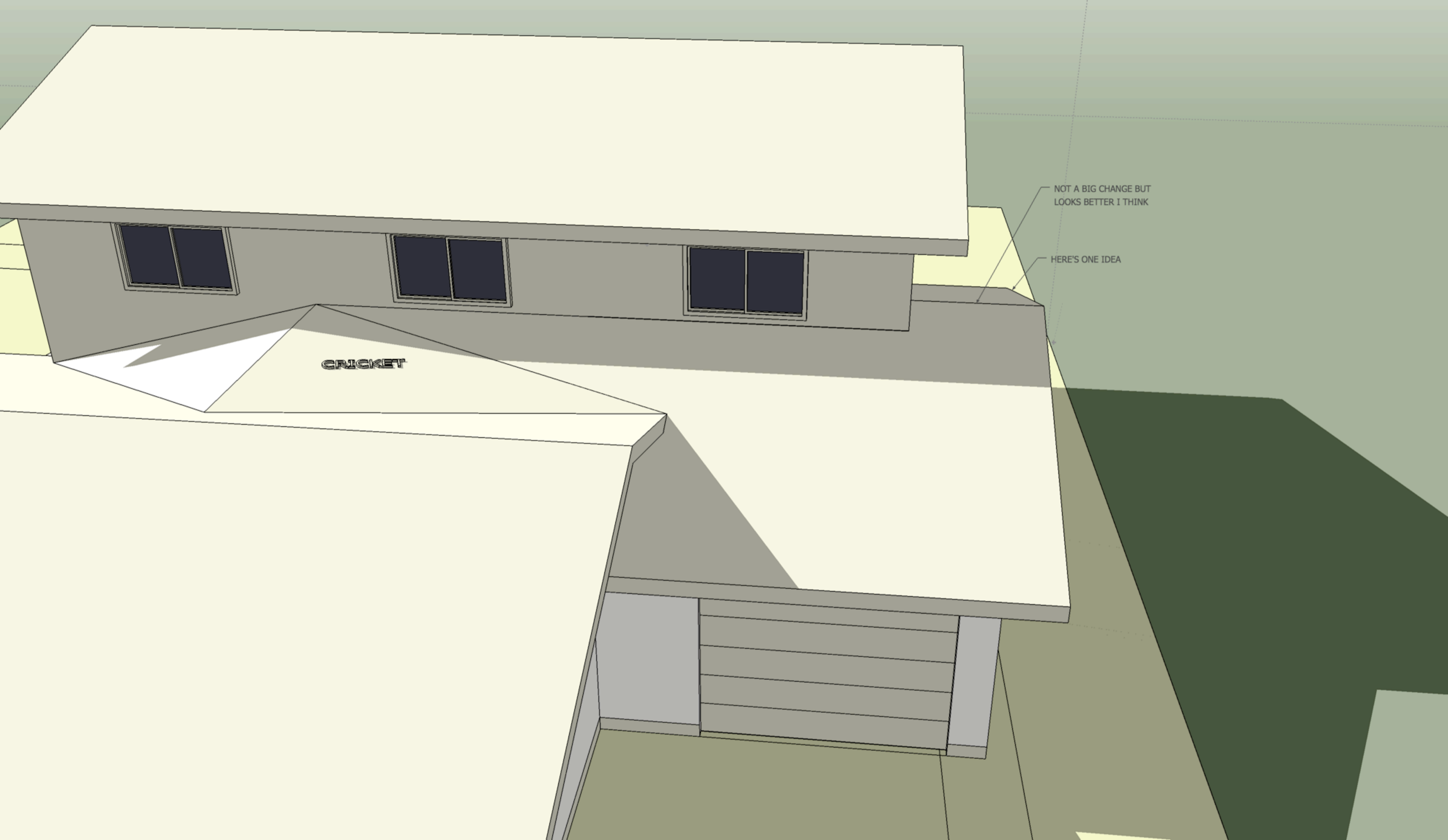
HERE'S C

W IS FROM THE
K

9' PLATES AT BOTH STORIES
AND 12"-16" H. ATTIC SIDE WALLS



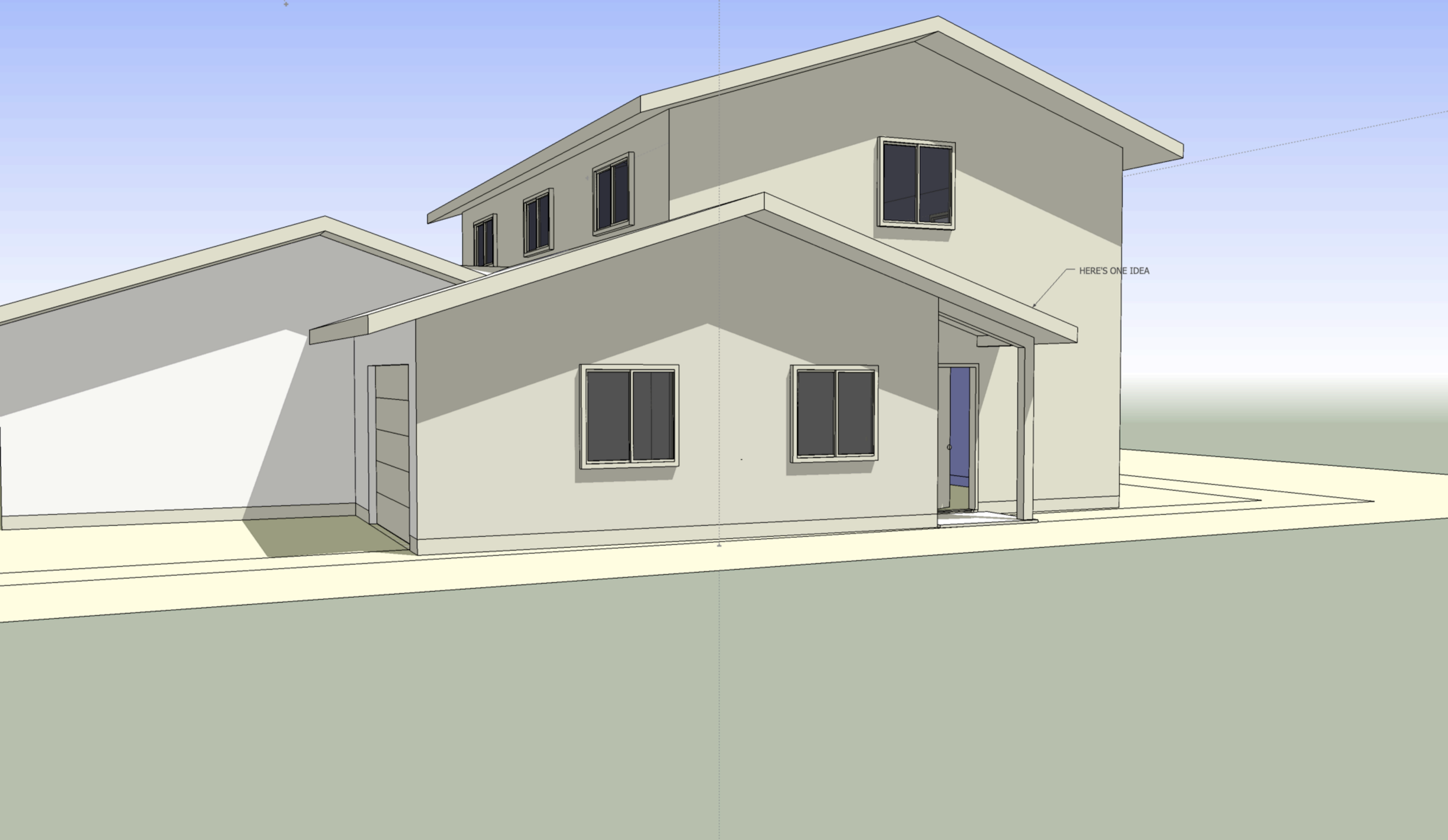
W IS FROM THE
K



CRICKET

NOT A BIG CHANGE BUT
LOOKS BETTER I THINK

HERE'S ONE IDEA



HERE'S ONE IDEA