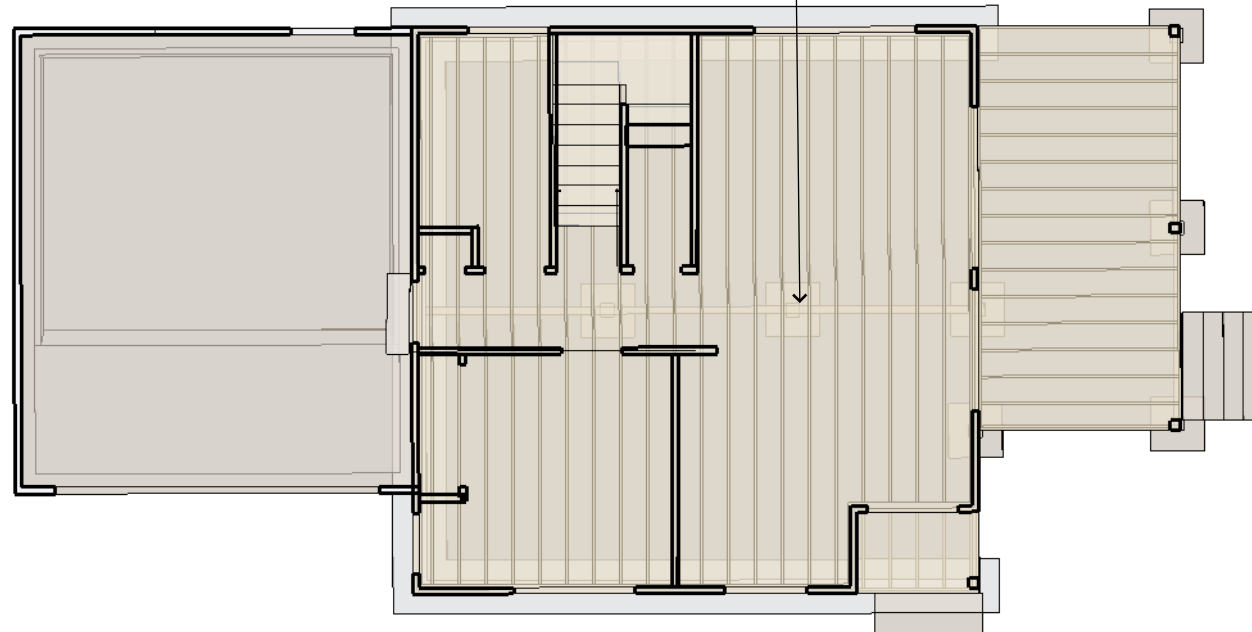


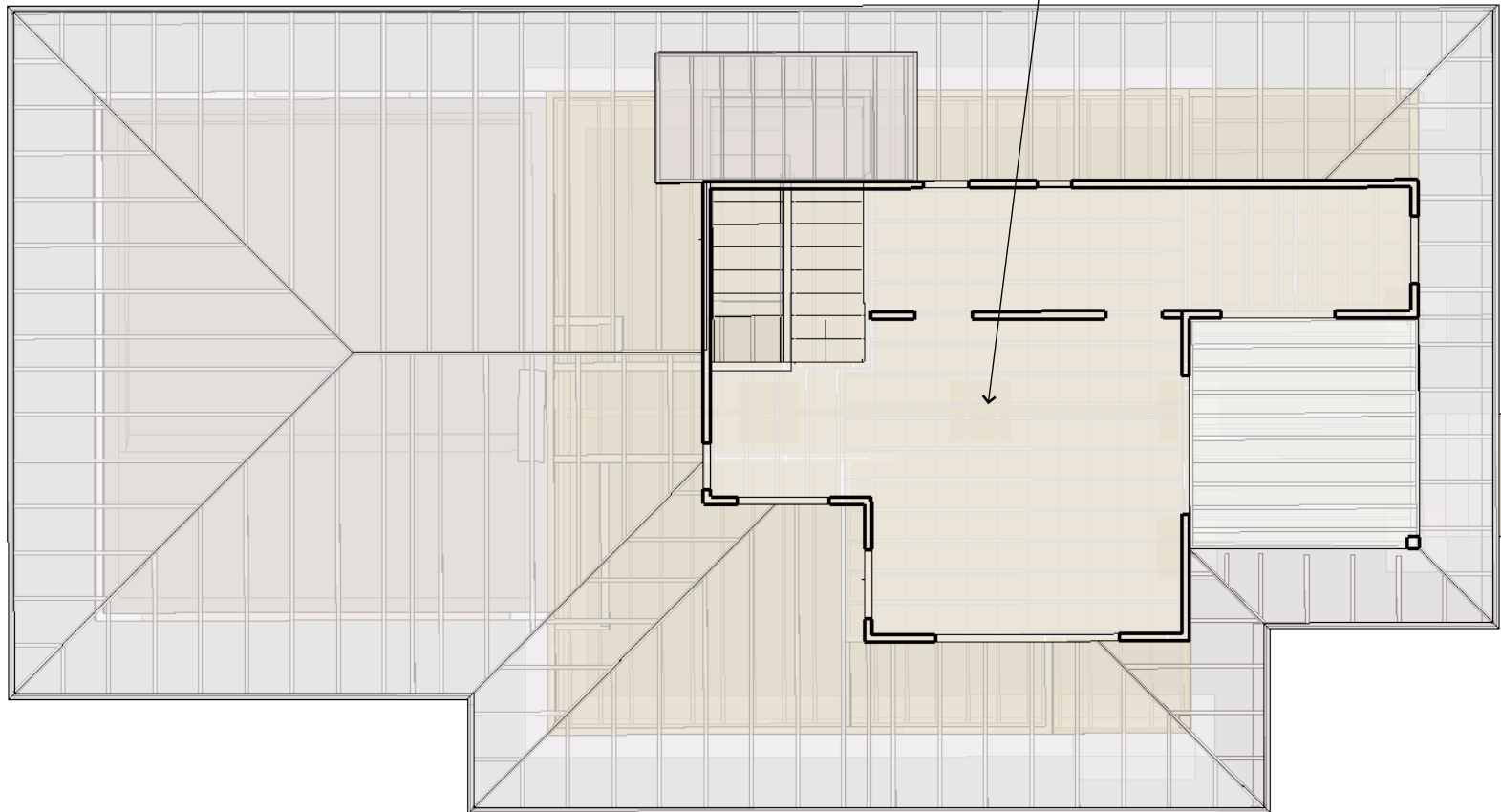
the floor joists, beam and the footing show thru in wire frame mode, but I cannot control WHICH of the components I want to "feature" i.e. if this is a floor framing plan, I would want the wall loads above "ghosted out, the joists and beams highlighted and the footings ghosted...



Load Paths best illustrated via
via Layers (not the SU kind) Visibility.

2nd Floor Framing Plan

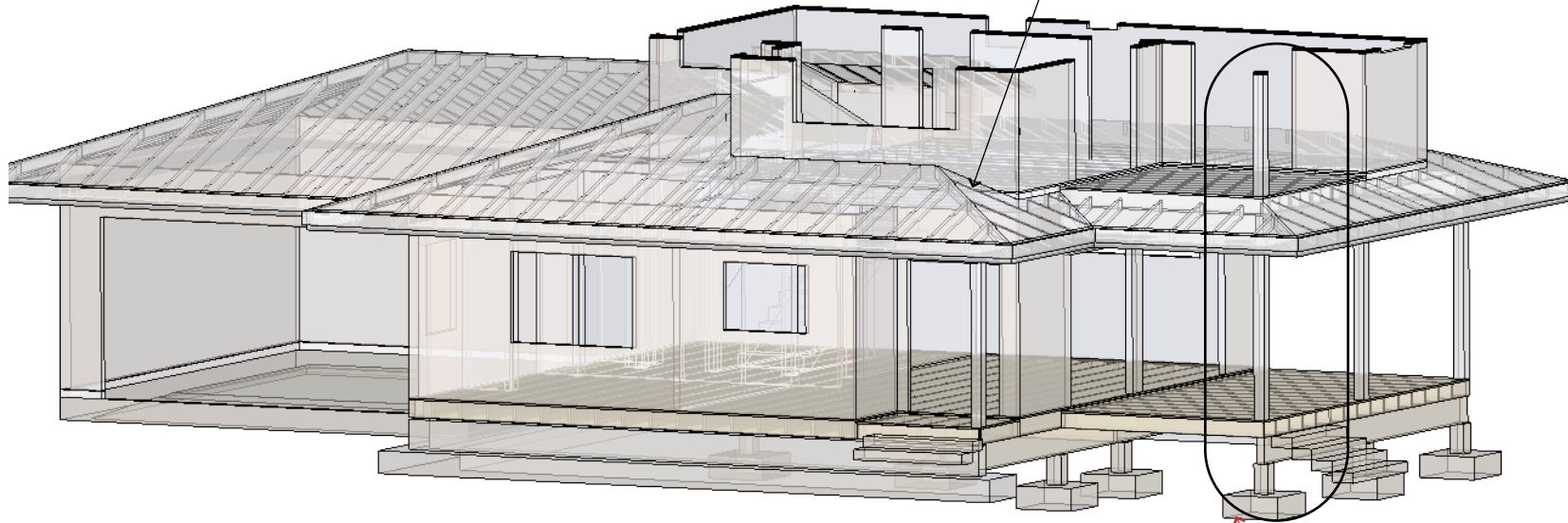
by the time I get to the second floor framing plan the floor joists, beam and the footing show thru in wire frame mode, but everything gets too confused in this example I want to highlight the floor framing plan, I would want the roof loads above "ghosted" and a clear illustration for the load paths going to grade.



Load Paths best illustrated via
via Layers (not the SU kind) Visibility.

this note illustrates yet another issue, that is frustrating me. when I "set up" a note with font, color, leader line, etc, then go to type a new one. this all reverts back to defaults (some times it will "stick" but I have yet to find how to control that feature)
is there a way to "reset" the defaults for the texts and label menu items?

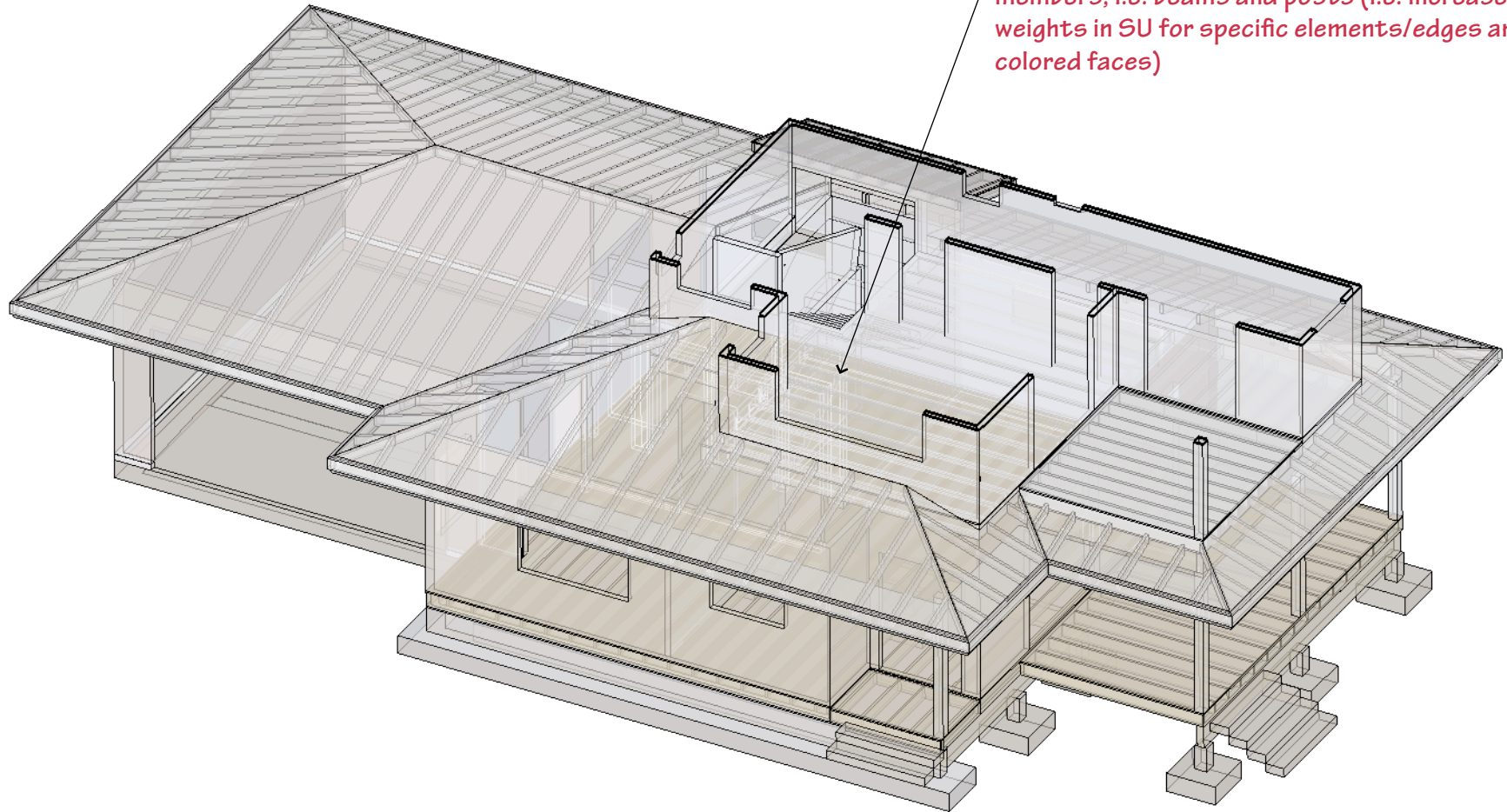
the floor joists, beam and the footing show thru in wire frame mode, but I cannot control WHICH of the components I want to "feature"
i.e. if this is a floor framing plan, I would want the wall loads above "ghosted out, the joists and beams highlighted and the footings ghosted... is this possible in SU/LO or do I have to "draw over lines" in LayOut to get highlighted line weights?



Load Paths best illustrated via
via Layers (not the SU kind) Visibility.

load path
best illustrated
via a
perspective
but the building
department
does not want perspectives on plans

by the time I get to the second floor, things get too busy to really see what needs to be illustrated, continuous load paths maybe this could be best illustrated via a section cut. I still wish I could isolate, then highlight specific members, i.e. beams and posts (i.e. increase line weights in SU for specific elements/edges and or colored faces)



Load Paths best illustrated via
via Layers (not the SU kind) Visibility.