

## Sections Manager 1.1.0 for SketchUp 2018 and higher (Free and Pro)

D. Bur, 04.06.2018

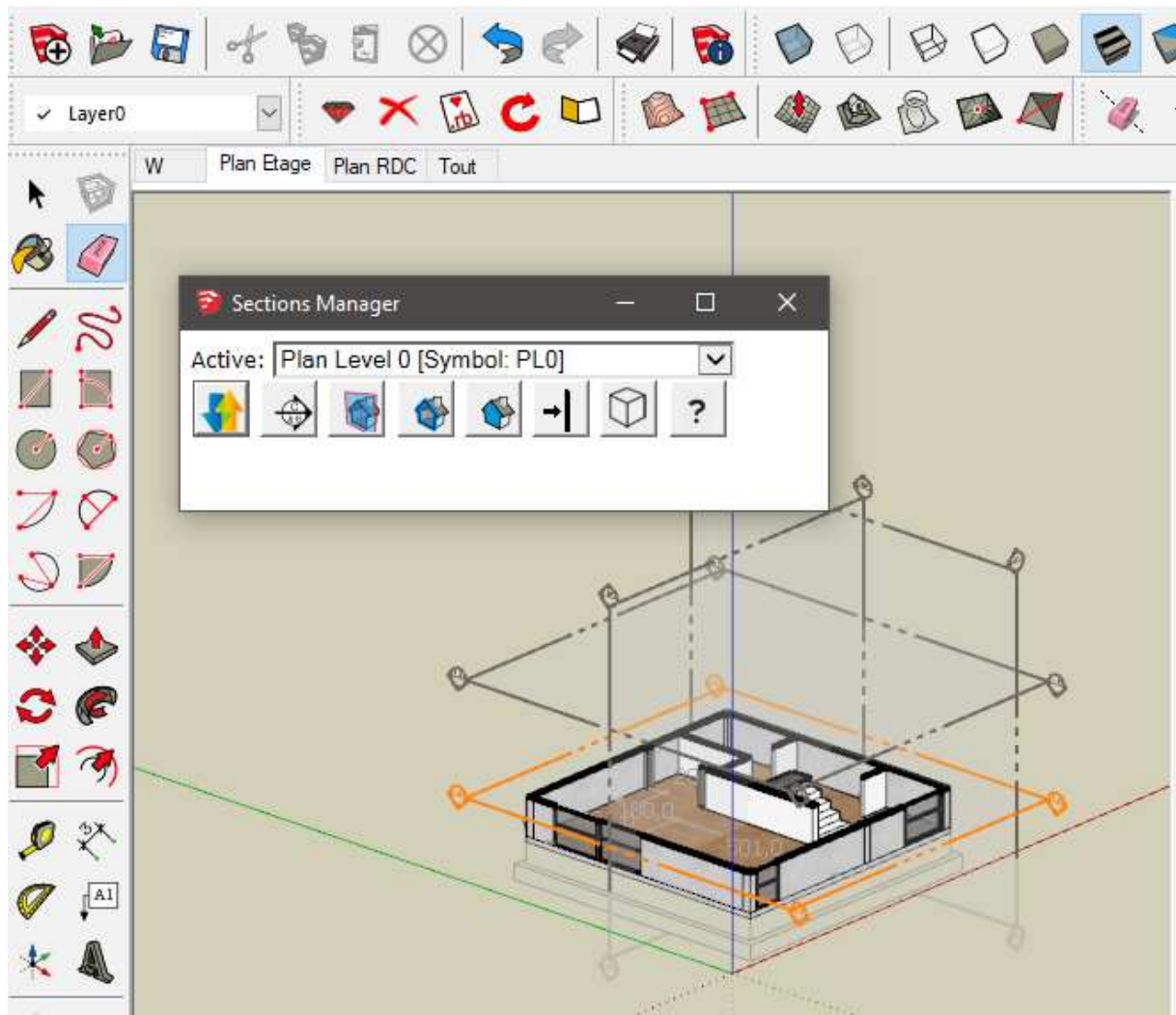
The Sections Manager is a floating window to easily manage your section planes.

It can be found in the **Windows menu** of SketchUp.

2 languages are provided: english, french (see below how to localize your version of the plugin).

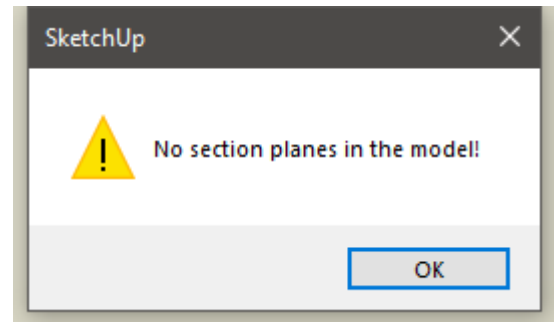
### 1. Display the dialog:

Select the "Sections Manager" item of the "Windows" menu. The window should appear at the top-left corner of the screen:

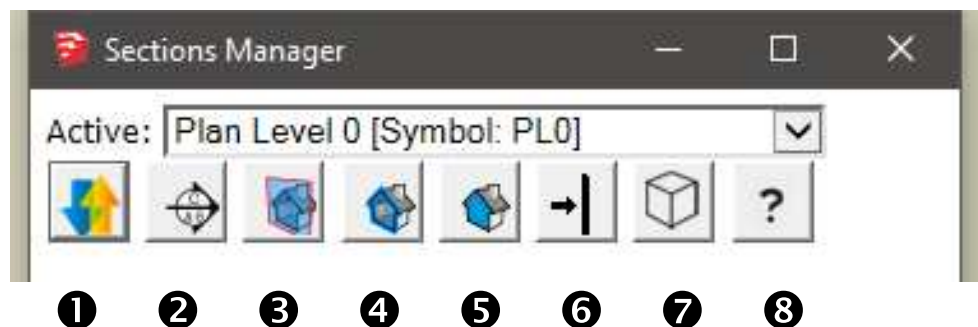


This is a standard floating window (webdialog) that you can move, minimize, maximize, close and resize.

If there are no section plane in the model, you'll get this message when opening a model or when SketchUp starts:



## 2. Tools



**Active:** the name and symbol of the section plane currently active. Choose a section plane in the list to activate it. Select "None" if you want to inactivate all section planes.

### Icons:

- ❶ invert the section plane direction
- ❷ create a section plane (same as the native tool)
- ❸ toggle display all section planes (same as the native tool)
- ❹ toggle display cut of the model (same as the native tool)
- ❺ toggle fill section elements (same as the native tool)
- ❻ align view perpendicular to the active section plane
- ❼ toggle perspective/parallel camera
- ❽ display this file

### 3. How to localize your version of Sections Manager:

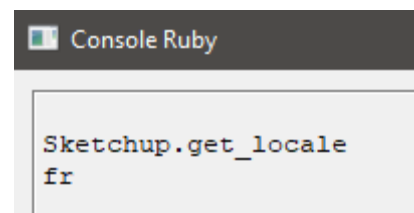
The extension is available in english and french. It automatically translates the menu item and the dialog when the plugin loads (detecting which locale version of SketchUp is actually running).

You can easily translate the extension to your own language, following these steps:

1. get your local version string of SketchUp
2. create your language file, translate it to your own language
3. restart SketchUP

#### 3.1. Get your locale version string of SketchUp:

In SketchUp, open the Ruby console from the Windows menu and type: `Sketchup.get_locale`

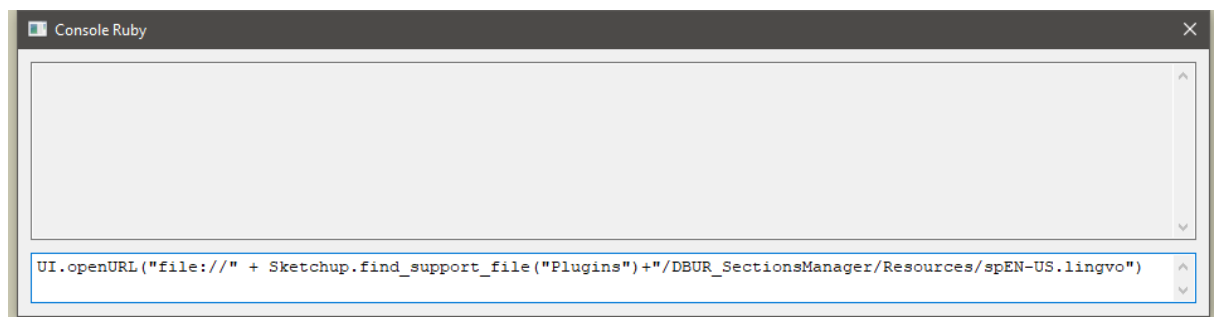


You'll get a string such as: en-US, fr, it, de, es, ja, ko, zh-CN, zh-TW, pt-BR, nl, ru.

#### 3.2. Open the base language file in a pure text editor:

Type this line of code in your Ruby console:

```
UI.openURL("file://" + Sketchup.find_support_file("Plugins")+"/DBUR_SectionsManager/Resources/spEN-US.lingvo")
```



Usually on a PC it should be:

```
C:\Users\YOUR_USER_NAME\AppData\Roaming\SketchUp\SketchUp 2018\SketchUp\Plugins\DBUR_SectionsManager\
```

#### 3.3. Create your language file, translate it to your own language:

Save the file you just opened as `spXX.lingvo`, where `XX` is the **capitalized** string you got at point 3.1.

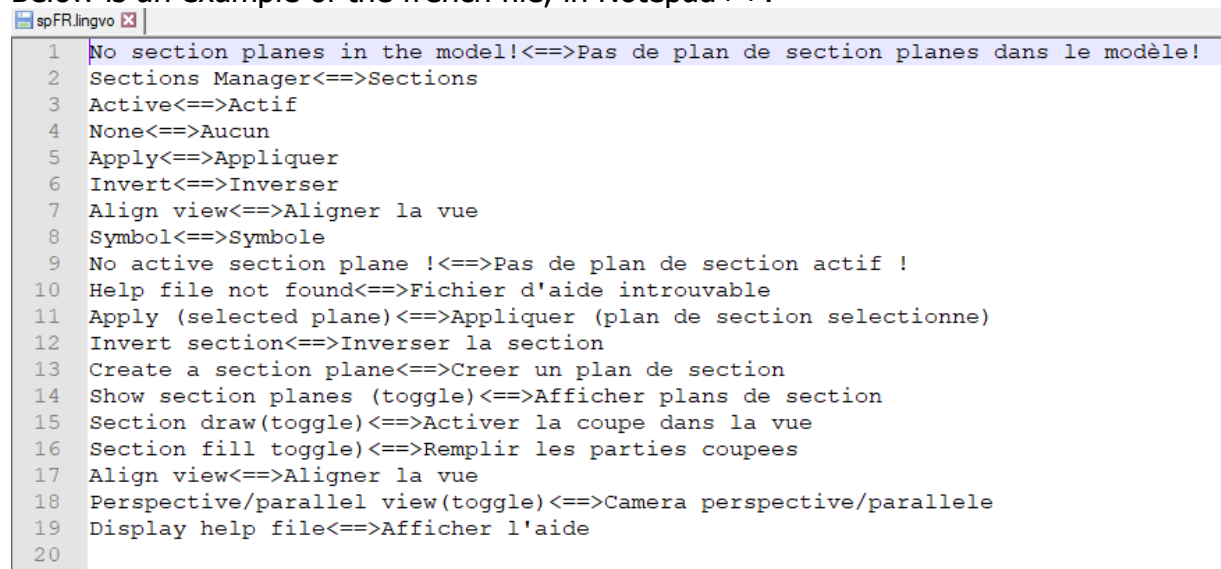
Examples: you got "it" when typing "Sketchup.get\_locale"  
➔ Save your language file as spIT.lingvo

you got " zh-CN" when typing "Sketchup.get\_locale"  
➔ Save your language file as spZH-CN.lingvo

Translate this new file:

Each line of the base file is divided in two parts, separated by <==>  
The **left** part is the **english** part and must be left unchanged.  
The **right** part of the line is your language part, that you must translate.

Below is an example of the french file, in Notepad++:



```
spFR.lingvo
1 No section planes in the model!<==>Pas de plan de section planes dans le modèle!
2 Sections Manager<==>Sections
3 Active<==>Actif
4 None<==>Aucun
5 Apply<==>Appliquer
6 Invert<==>Inverser
7 Align view<==>Aligner la vue
8 Symbol<==>Symbole
9 No active section plane !<==>Pas de plan de section actif !
10 Help file not found<==>Fichier d'aide introuvable
11 Apply (selected plane)<==>Appliquer (plan de section selectionne)
12 Invert section<==>Inverser la section
13 Create a section plane<==>Creer un plan de section
14 Show section planes (toggle)<==>Afficher plans de section
15 Section draw(toggle)<==>Activer la coupe dans la vue
16 Section fill toggle)<==>Remplir les parties coupees
17 Align view<==>Aligner la vue
18 Perspective/parallel view(toggle)<==>Camera perspective/parallele
19 Display help file<==>Afficher l'aide
20
```

Be careful to translate exactly the right part, respecting the spaces.  
There are actually 19 lines to translate.  
Line 20 is a blank line, and must be left as is.  
When done, save the file again. Restart SketchUp and you're done!

Please send me your lingvo translated file so I can include it in the extension for other users of your language. Thank you.