

SECTION B-B

ALUMINIUM BOX GUTTER PPC TO RAL 9007

12MM ENGINEERED WOOD FLOORING GLUED TO 8MM PLYWOOD SCREW FIXED TO 38 MM CHIPBOARD DATUM FOR TOP OF CHIPBOARD 68.936

65X15 MM S/S FLATS TO FORM HANDRAIL AND BALUSTERS AND 15MM TOUGHENED GLASS PANELS

45MM FRICTION FIXED PROPRIETARY S/S HANDRAIL

PRESSED PPC ALUMINIUM DRIP

25MM GRANITE SKIRT CLAMPED TO RING BEAM

45MM SS HANDRAIL FIXED TO WALL

15 MM TOUGHENED GLASS SET IN ALUMINIUM FLOOR CHANNEL

MIN 80 MM HIGH AREA LEFT FOR CURTAIN WALLING CONTRACTOR

SS FACE PLATE

NEW BASEMENT FLOOR
U-Value 0.24 W/m²K:
15 PORCELAIN TILES AND ADHESIVE
75MM SCREED
POLYTHENE SLIP LAYER
75MM KINGSPAN THERMAFLOOR T770 INSULATION
SELF-ADHESIVE DPM
180MM POWER FLOATED CONCRETE SLAB WITH A393 MESH
150MM BLINDING AND HARDCORE

FLOOR CONSTRUCTION (OVER BASEMENT)
10MM PORCELAIN TILES OVER 5MM ADHESIVE
75MM SCREED WITH FIBRILLATED POLYPROPYLENE FIBRES RHEOFIBRE 660 BY BASF
POLYTHENE SLIP LAYER
140MM CONCRETE SLAB WITH A393 MESH ON GALVANIZED PROFILE SHEETING
MIN 125MM CEILING VOID
12.5MM PLASTERBOARD AND SKIM, PAINTED ON CYPRID CASELINE MF SUSPENDED CEILING SYSTEM

ACCESS PANEL

LOADBEARING RECONSTITUTED STONE LINTEL

RECONSTITUTED STONE AND DPC

LOUVRED SCREEN SEE DSA DRAWINGS

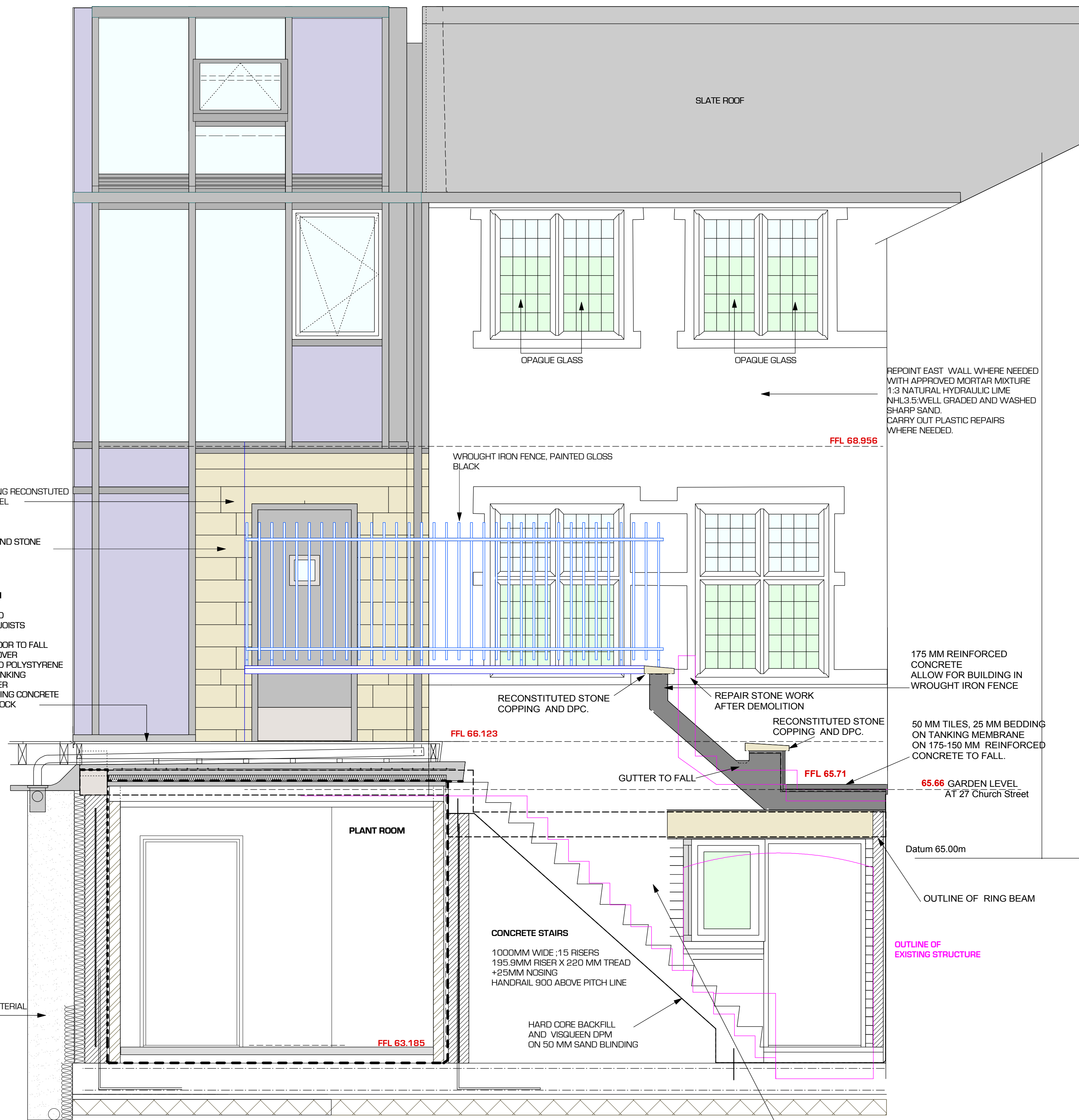
ASHLAR BOND STONE

PLANT ROOM

450mm WIDE GRANULAR MATERIAL AS DRAINAGE MEDIA AND GEOTEXTILE MEMBRANE TO DRAINAGE MEDIA

NEW BASEMENT WALL
100 MM POLYFOAM FLOORBOARD EXTRA INSULATION BY KNAUF
21.5MM DENSE CONCRETE HOLLOW BLOCK RETAINING WALL WITH REINFORCEMENT AS DIRECTED BY STRUCTURAL ENGINEER
BLOCKWORK PRIMED FOR PROPRIETARY ADHESIVE TANKING SYSTEM
SELF-ADHESIVE DPM VERTICAL MEMBRANE LAPPED WITH HORIZONTAL DPM
25+25 MM GAP PACKED WITH MORTAR @ EVERY COURSE
100 MM FAIR FACED BRICKWORK

50MM SOLID IRONK LANDING AND 20 MM SOLID IRONK RISER ON TIMBER JOISTS
FACTORY FINISHED OIL TREATED
ADDITIONAL COAT OF FC-5 HARDWAX-OIL REQUIRED AFTER COMPLETION



SECTION C-C/ EAST ELEVATION

SLATE ROOF

OPAQUE GLASS

WROUGHT IRON FENCE, PAINTED GLOSS BLACK

RECONSTITUTED STONE COPPING AND DPC

REPAIR STONE WORK AFTER DEMOLITION

RECONSTITUTED STONE COPPING AND DPC

GUTTER TO FALL

PLANT ROOM

CONCRETE STAIRS
100MM WIDE :15 RISERS
195.9MM RISER X 220 MM TREAD
+25MM NOSING
HANDRAIL 900 ABOVE PITCH LINE

HARD CORE BACKFILL AND VISQUEEN DPM ON 50 MM SAND BLINDING

175 MM REINFORCED CONCRETE ALLOW FOR BUILDING IN WROUGHT IRON FENCE

50 MM TILES, 25 MM BEDDING ON TANKING MEMBRANE ON 175-150 MM REINFORCED CONCRETE TO FALL.

65.66 GARDEN LEVEL AT 27 Church Street

Datum 65.00m

OUTLINE OF RING BEAM

OUTLINE OF EXISTING STRUCTURE

450mm WIDE GRANULAR MATERIAL AS DRAINAGE MEDIA AND GEOTEXTILE MEMBRANE TO DRAINAGE MEDIA

RAKE OUT THE MORTAR FROM THE WHOLE OF THE EXISTING FEATURE BAND OF BRICKWORK BELOW THE STONE. BUILD IN RECLAIMED BRICKS (TO MATCH THE EXISTING) TO PICK UP THE PROJECTED NEW STAIRCASE PITCH AND LEAVE JOINTS RAKED OUT. CLEAN DOWN THE WHOLE FACE OF THE EXISTING BRICKWORK BAND AND REPOINT IN FULL TO LOW LEVEL BRICKWORK TO THIS AREA TO ACHIEVE UNIFORM COLOUR MATCH. BREAK OUT THE REMAINDER OF THE CONCRETE SLAB THAT HAS BEEN BUILT INTO STONE AT GROUND LEVEL. FIT THE NEW STONE TO MATCH THE EXISTING AS CLOSELY AS POSSIBLE AND REPOINT THE STONE WALL BELOW THE WINDOW CILL LOCALLY.