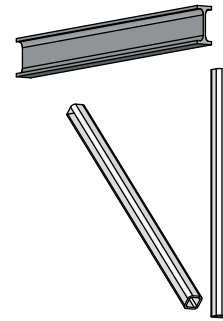
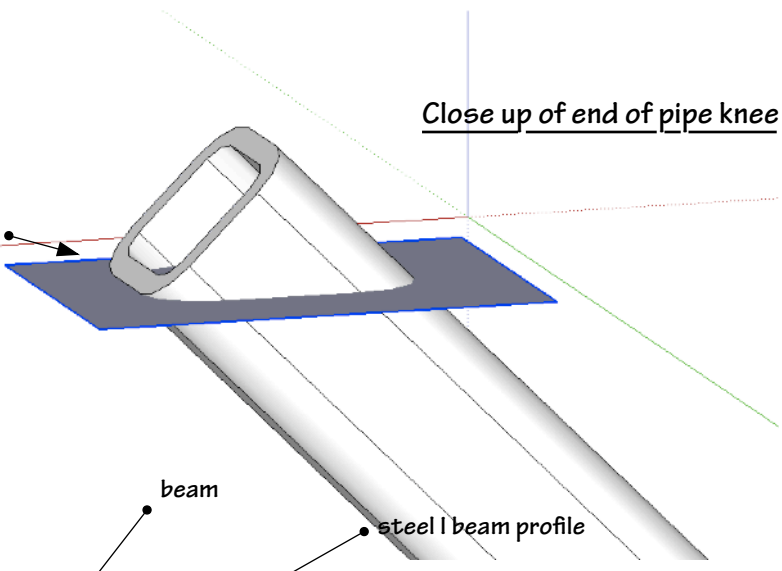
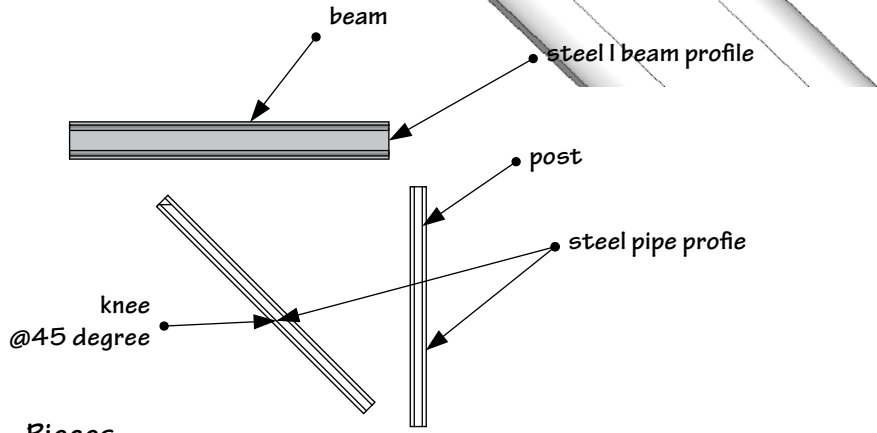
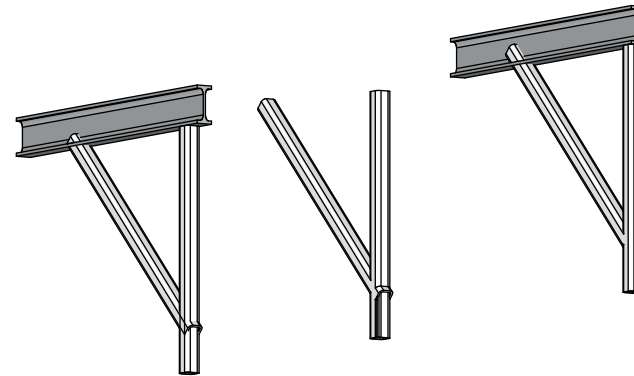


I seek to be able to "cut" or slice along this plane so that I have a 45 degree cut that I can then join to the bottom of the beam

Close up of end of pipe knee



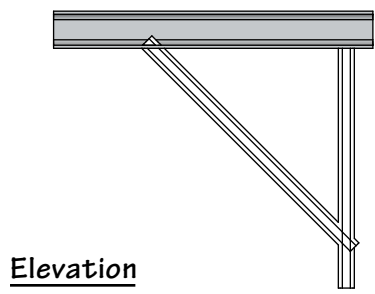
Perspective



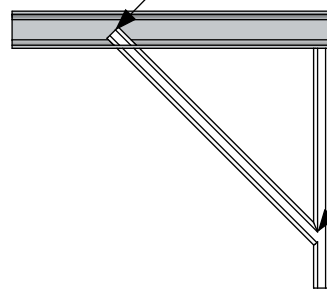
Pieces

this union does not slice, tried Zorro too...

okay, using BoolTools, Union, IF I place the knee correctly I get a good weld of the knee to the post



Post and Knee Union where knee extends past post



Post and Knee Union where knee is stopped at mid post

Elevation

How to "weld" two components gathered from the warehouse?