

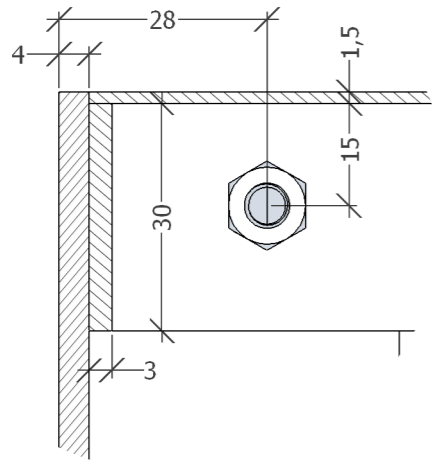
Materials

Raw hot rolled iron, burned in stove. Treatment- clear mat lacker.
 "L" shape iron 45 x 30 x 4mm welded for vertical details.
 Sockle laser cut details and bottom shelf fixed with M6 bolts.
 Top cabinet part fixed onto bottom cabinet part with M6 bolts.
 Top shelves on both parts- modules fixed with M6 bolts.
 Adjustable shelves adjustment with M6 bolts screwed in the shelf sides- hole cut outs in apposite vertical profiles for height adjustment- step 60mm.
 Height adjustable legs-screws, M10 bolts, welded at the bottom.

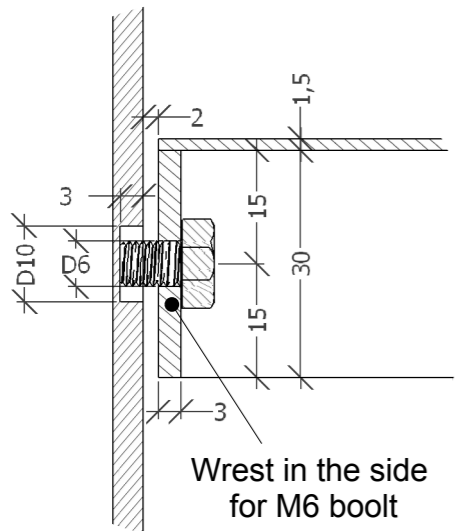
dxg file:
 "8200-02-22001"

Subject: Model "Sign"		Area: A3	
Item number: ...		Scale: 1: 20	
Drawn by: IP	Date: 12.10.2011	Case No: 8200	Rev.No
Approved:	Date: 12.10.2011	8200-02-22001	

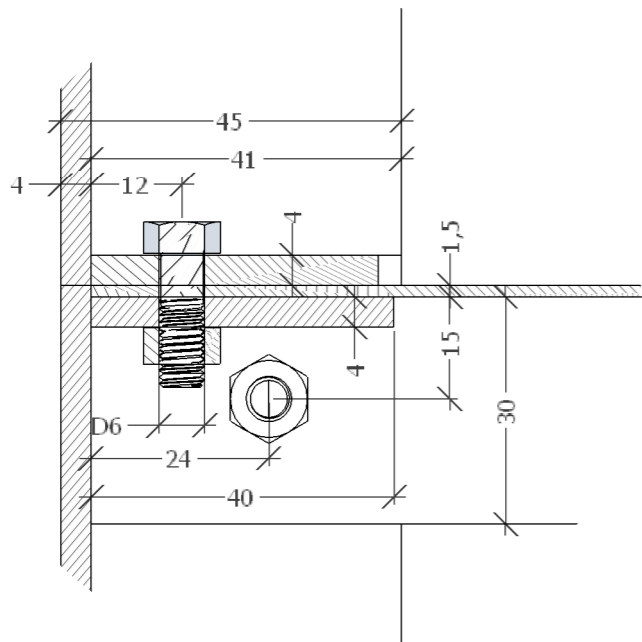
D (1:1)



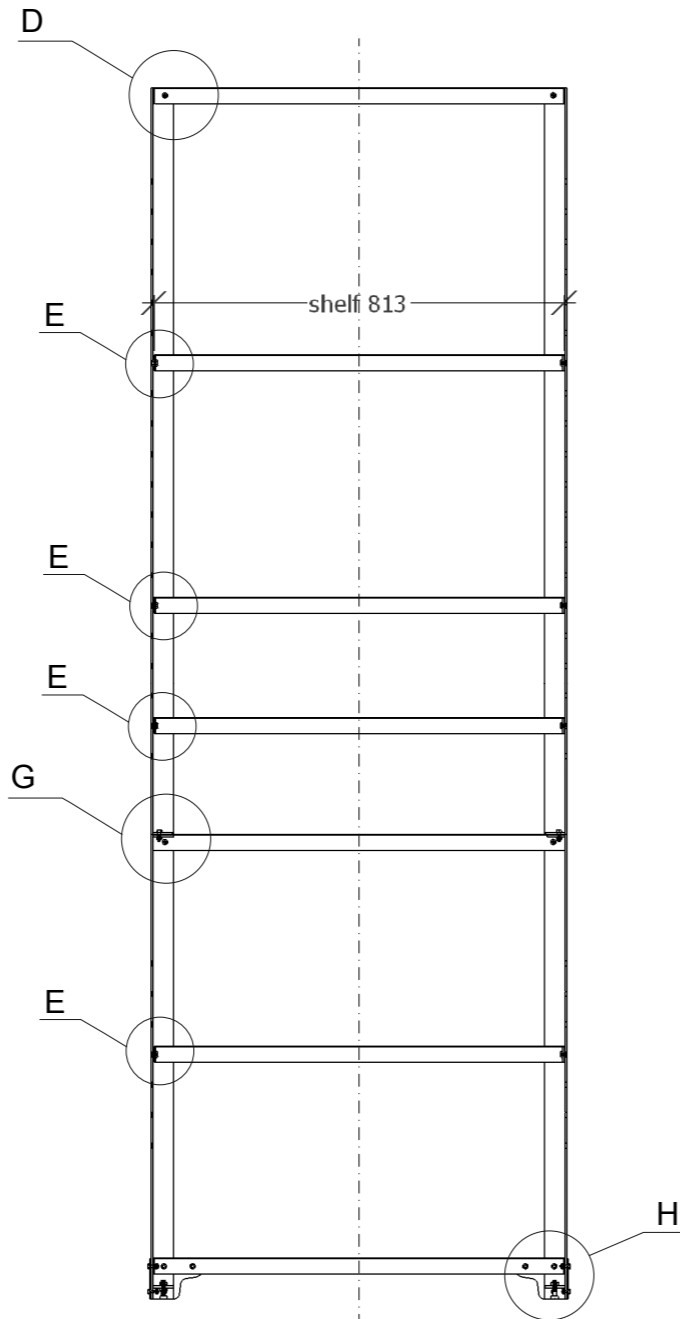
E (1:1)



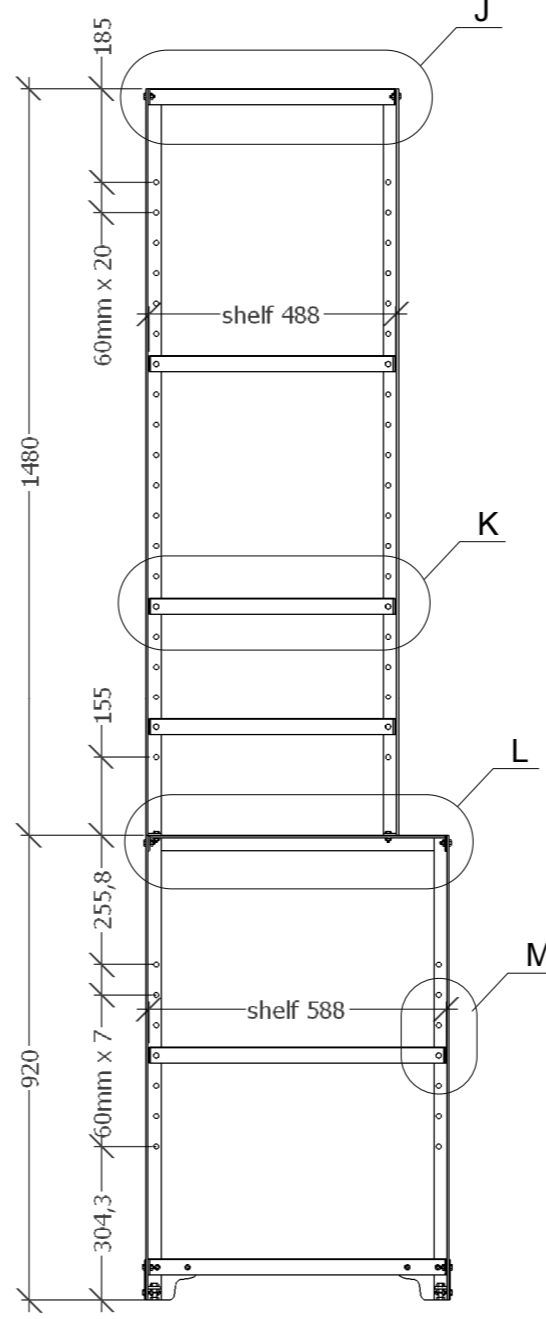
G (1:1)



A-A

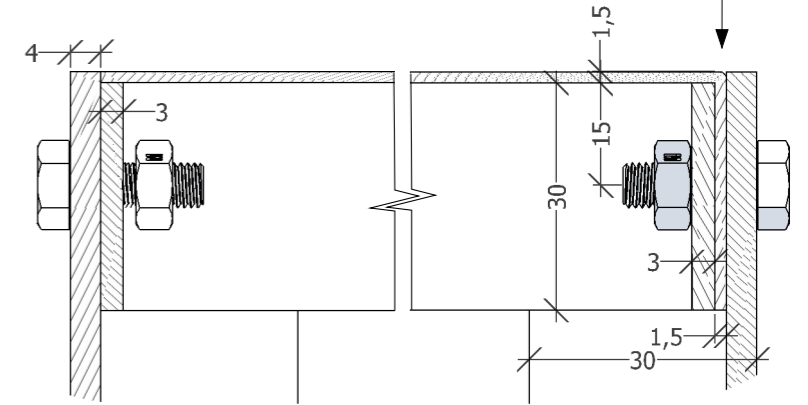


B-B

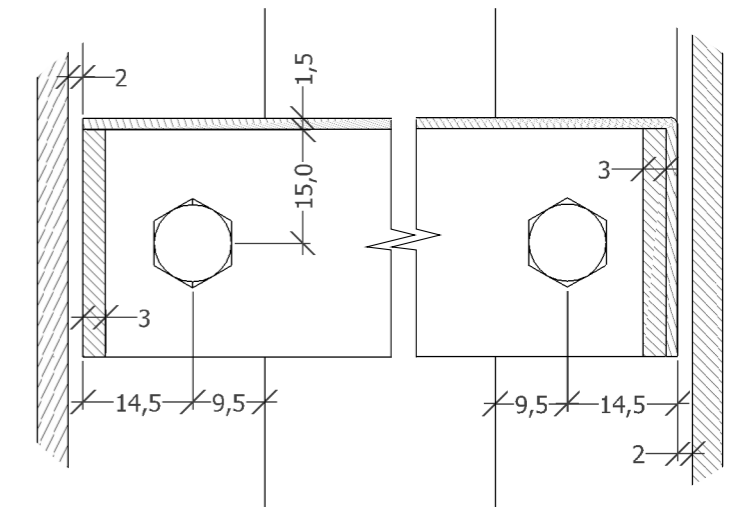


1,5mm shelf top bended over the edge in the front

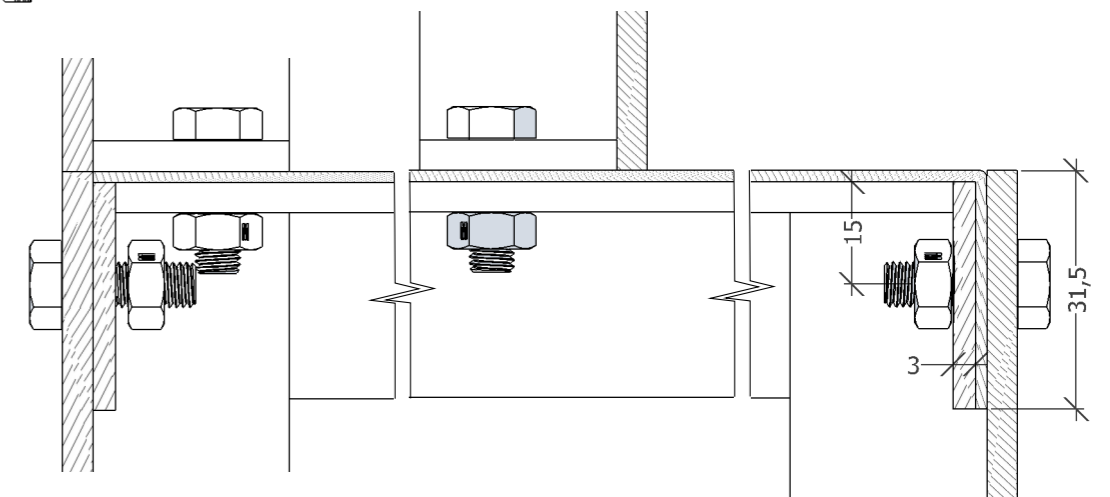
J (1:1)



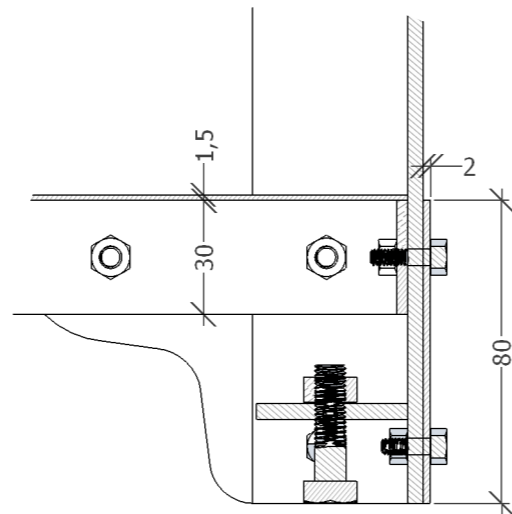
K (1:1)



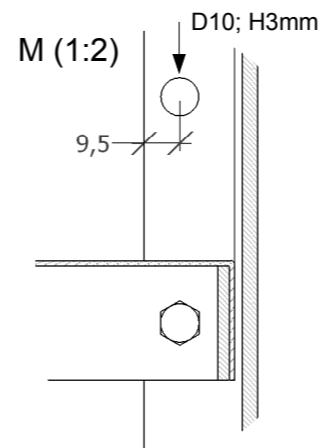
L (1:1)



H (1:2)



M (1:2)



Subject: Model "Sign"		Area: A3	
Item number: ...		Scale: 1: 15	
Drawn by: IP		Date: 12.10.2011	Case No: 8200
Approved:		Date: 12.10.2011	Drawing No: Rev.No
Page 2 of 2		8200-02-22001	

Copyright