

KEY NOTES ~ PER PAGE

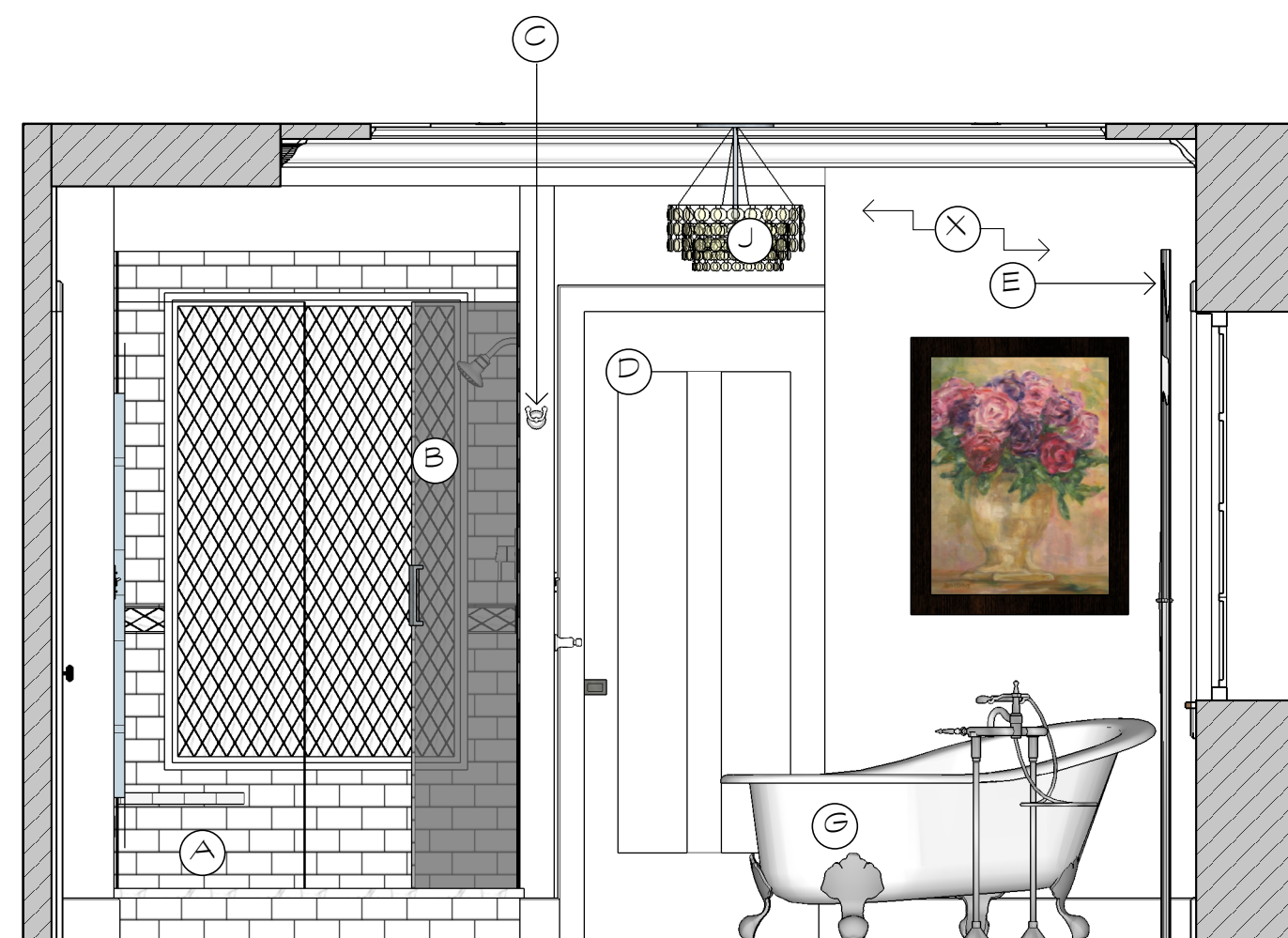
- (A) -NEW TILE SHOWER - SEE TILE DETAIL SHEET
- (B) -3/8" CLEAR GLASS SHOWER DOOR
- (C) -ROBE HOOK - INSTALL AT 70" A.F.F. & CENTERED ON WALL END
- (D) -POCKET DOOR TO MASTER CLOSET
- (E) -WINDOW COVERING BY OTHERS
- (F) -TOWEL RING - MATCH INSTALL DETAIL ON OPPOSITE WALL
- (G) -NEW SOAKING TUB WITH FLOOR MOUNTED TUB FILLER
- (H) -NEW TOILET IN NEW LOCATION
- (I) -PAPER HOLDER
- (J) -INSTALL OWNERS HANGING FIXTURE
- (K) -SCONCE LIGHTING - SEE SPECIFICATION - CONSULT DESIGNER AT INSTALL
- (L) -INSTALL RECEPTACLE 4 1/2" (CL) ABOVE FINISHED COUNTER
- (M) -THICKENED WALLS TO FRAME VANITY AREA
- (N) -STANDARD BASE RUNS BEHIND FURNITURE STYLE VANITY
- (O) -INSTALL NEW CASING, REUSE EXISTING SILL
- (P) -INSTALL OWNERS WALL HUNG MIRROR - FV HEIGHT
- (Q) -NEW STANDARD BASE THROUGHOUT ROOM
- (R) -NEW DRYWALL / REPAIRED PLASTER - PAINT
- (S) -MODIFIED MIRRORS WITH MEDICINE CABINETS - CONSULT DESIGNER
- (T) -INSTALL RECEPTACLE FOR DRAWER ACCESS
- (U) -SEE CABINET DETAIL SHEET FOR CABINET / TOP SPECIFICATION
- (V) -6" X 30" TOILET TOPPER WITH SMALL CROWN MOLDING - SEE CABINET DETAIL SHEET
- (W) -WINDOW TO BE RE-GLAZED WITH TEMPERED GLASS PER RCO 308.4
- (X) -NEW DRYWALL AND PAINT
- (Y) -TOWEL BAR
- (Z) -RECESSED AREA BEHIND MIRRORS FOR MEDICINE CABINETS - SEE FRAMING PLAN FOR ADDITIONAL INFORMATION AND CONSULT DESIGNER

GENERAL NOTES

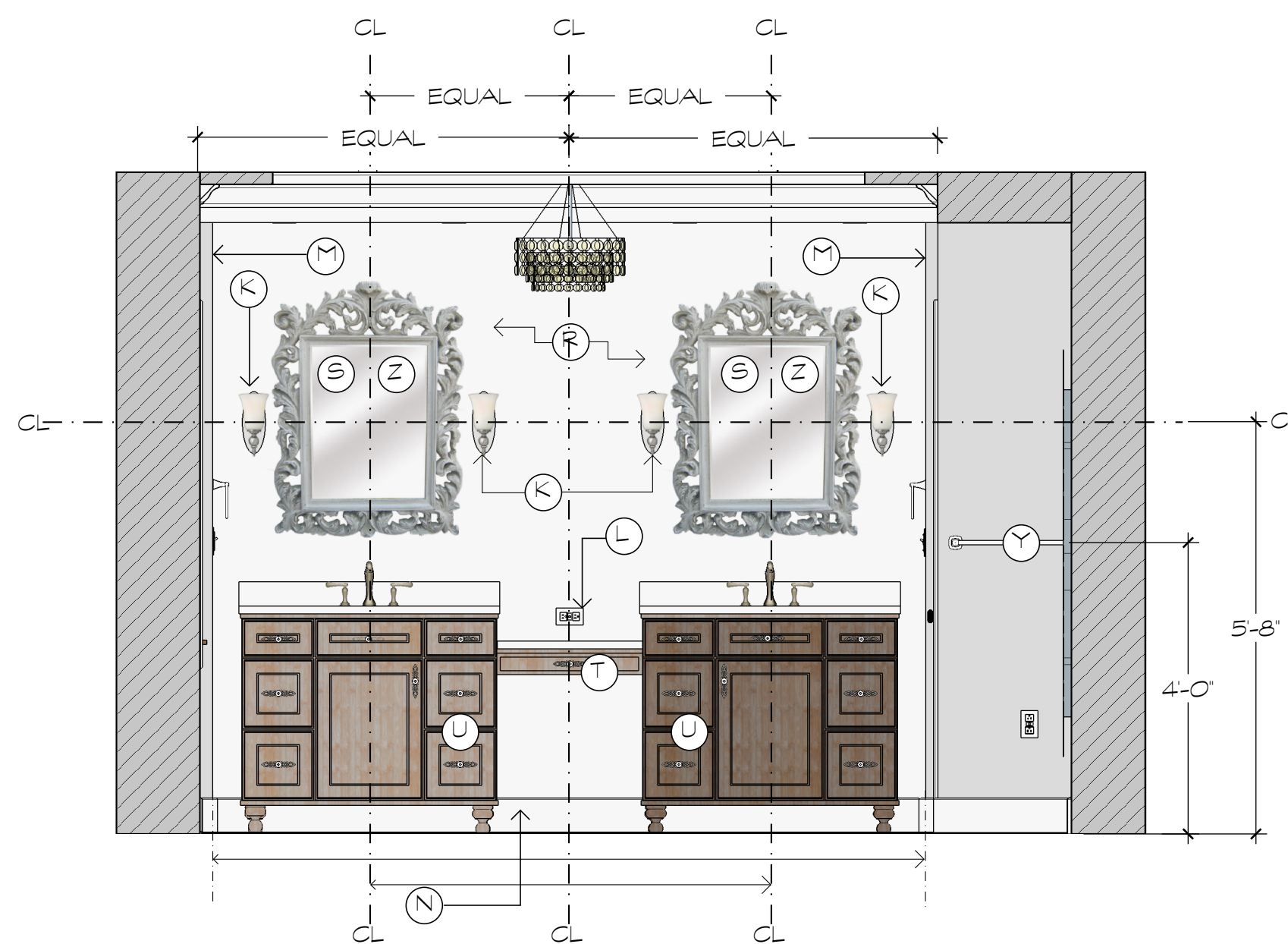
- ALL WALL SURFACES TO BE NEW DRYWALL OR REPAIRED EXISTING PLASTER - FV
- BASEBOARDS NEW THROUGHOUT ROOM - SEE DETAIL SHEET FOR STANDARD BASEBOARD PROFILE
- SEE DOOR SCHEDULE FOR DOOR CASING SPECIFICATION
- INSTALL NEW WINDOW CASING
- OVERLAY EXISTING PLASTER CEILING

WALL TYPES

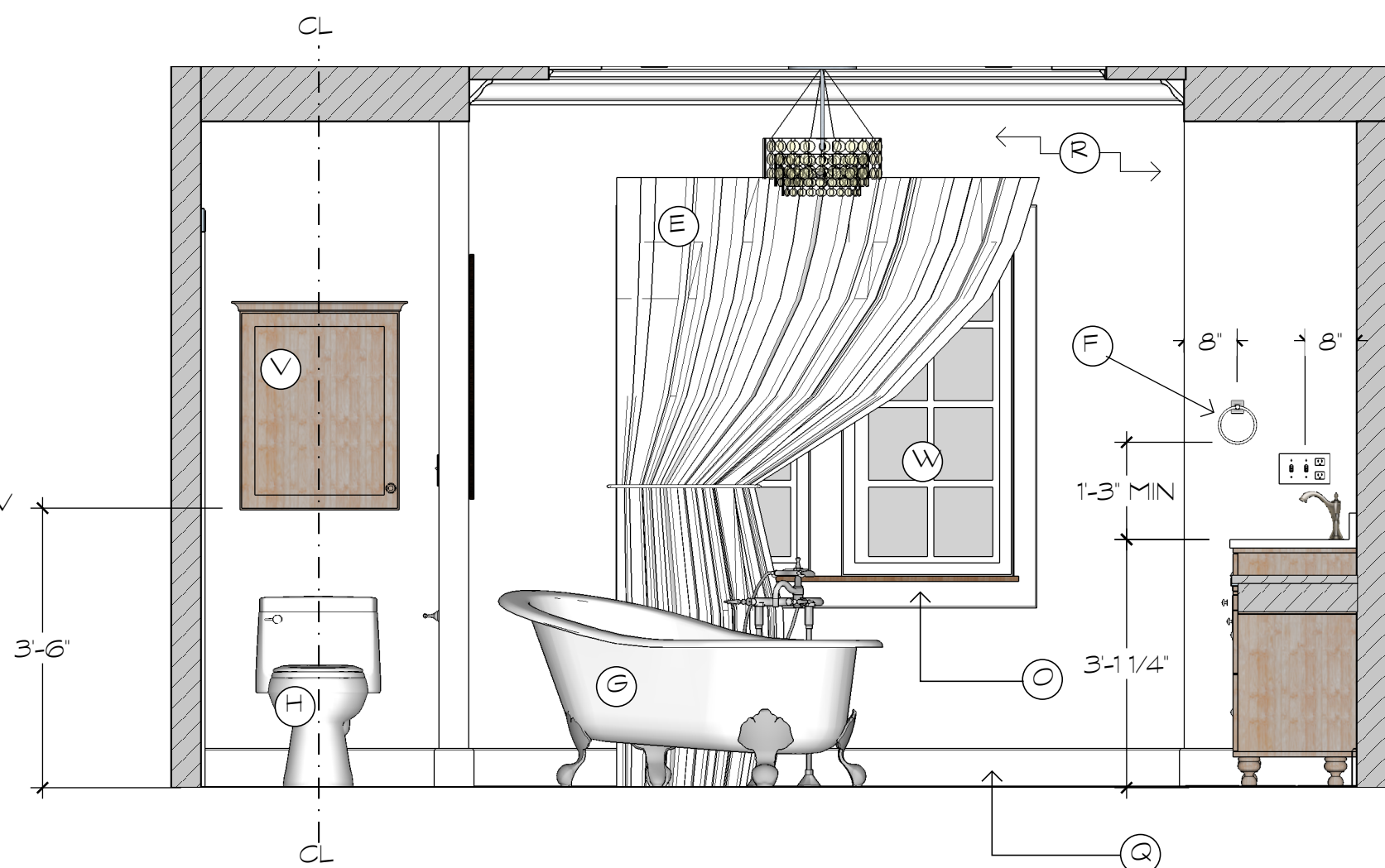
= SECTION CUT AREA



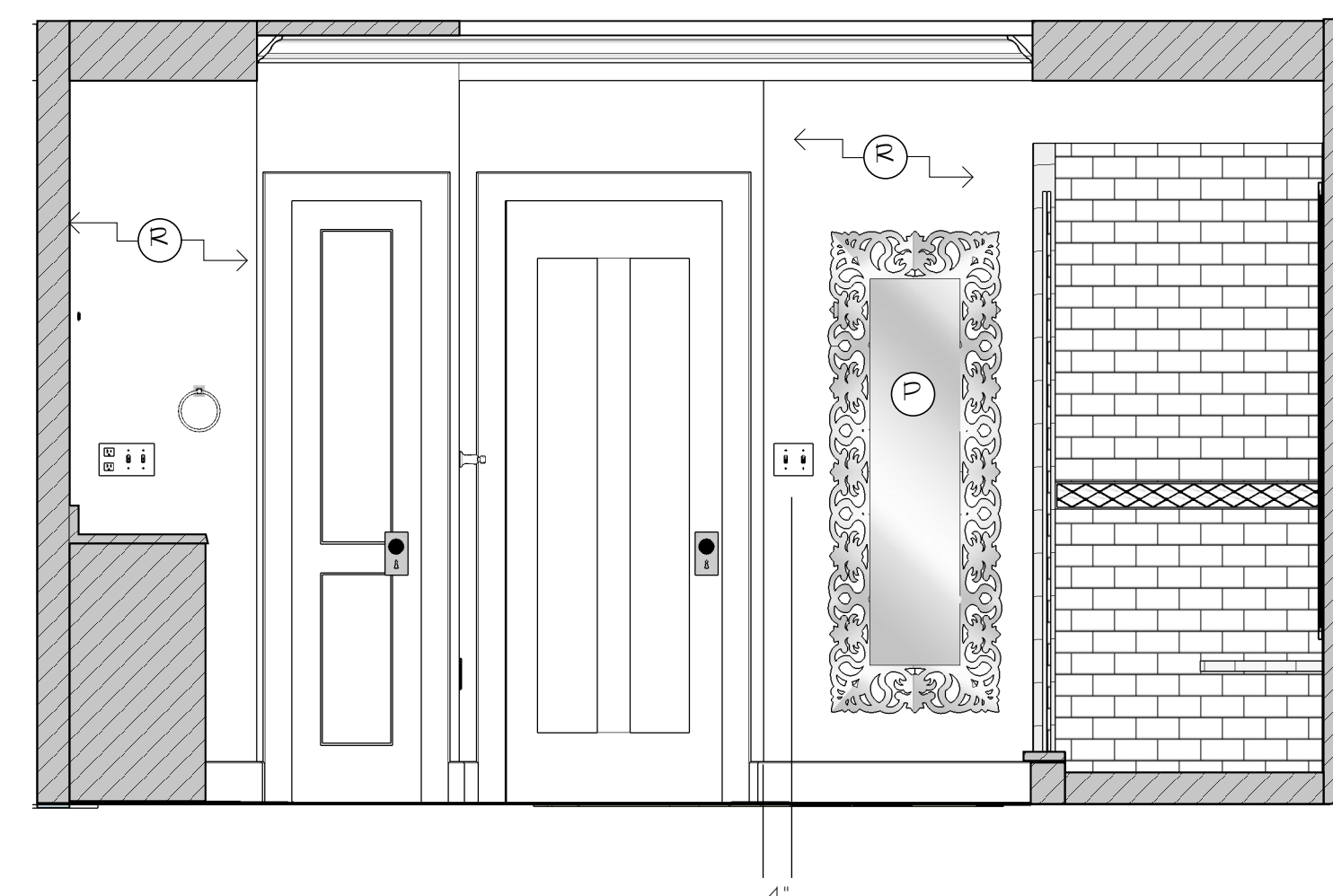
ELEVATION - SHOWER WALL
A21 002 | SCALE: 1/2" = 1'-0"



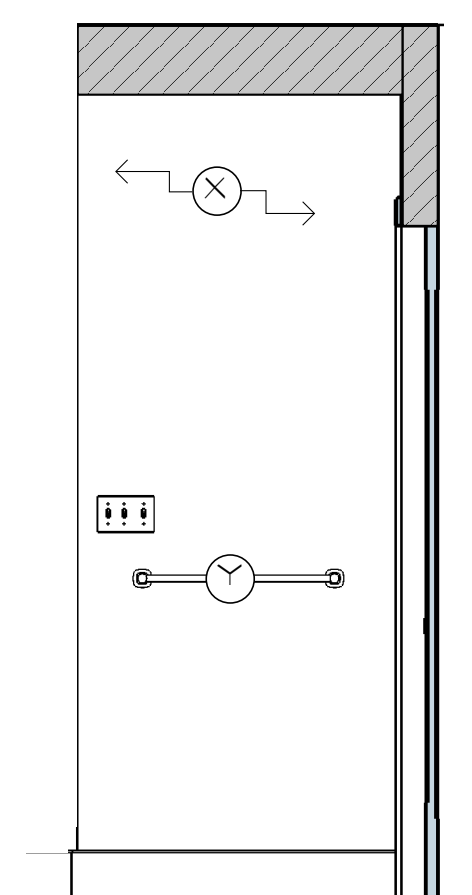
ELEVATION - VANITY WALL
A21 004 | SCALE: 1/2" = 1'-0"



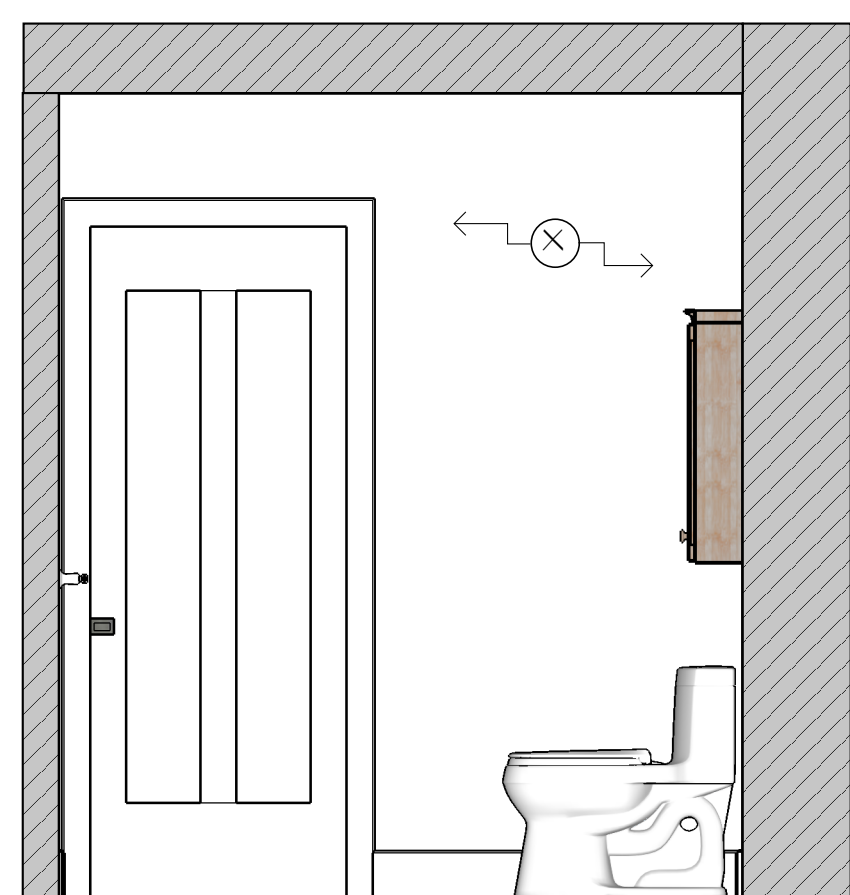
ELEVATION - WINDOW WALL
A21 003 | SCALE: 1/2" = 1'-0"



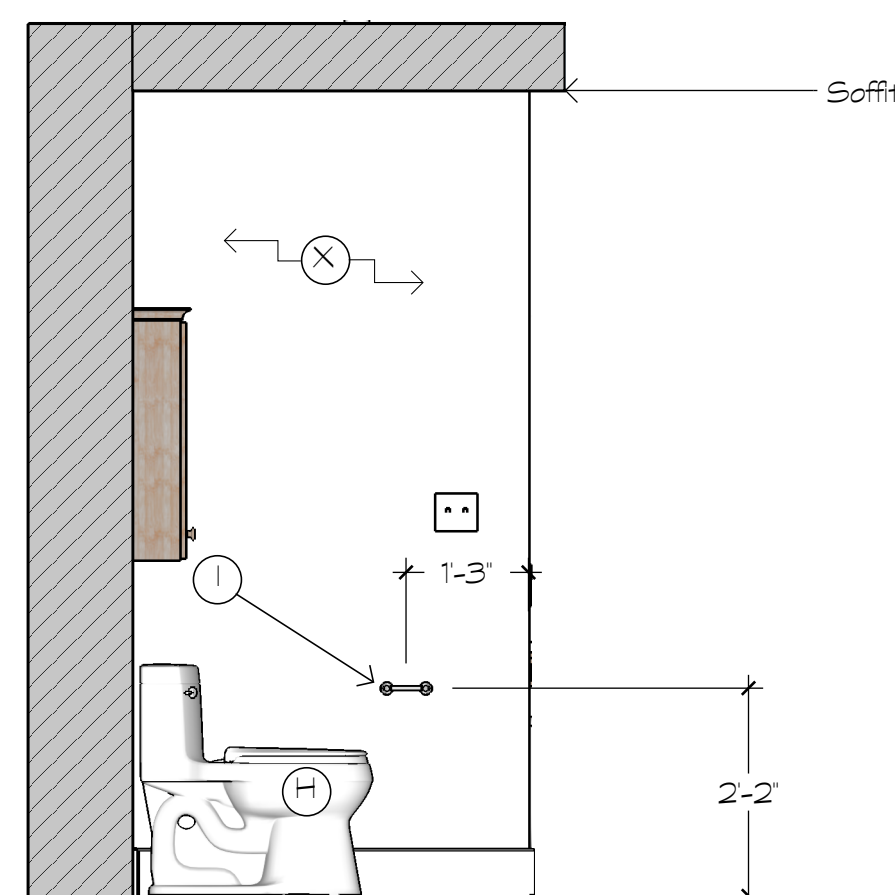
ELEVATION - DOOR WALL
A21 001 | SCALE: 1/2" = 1'-0"



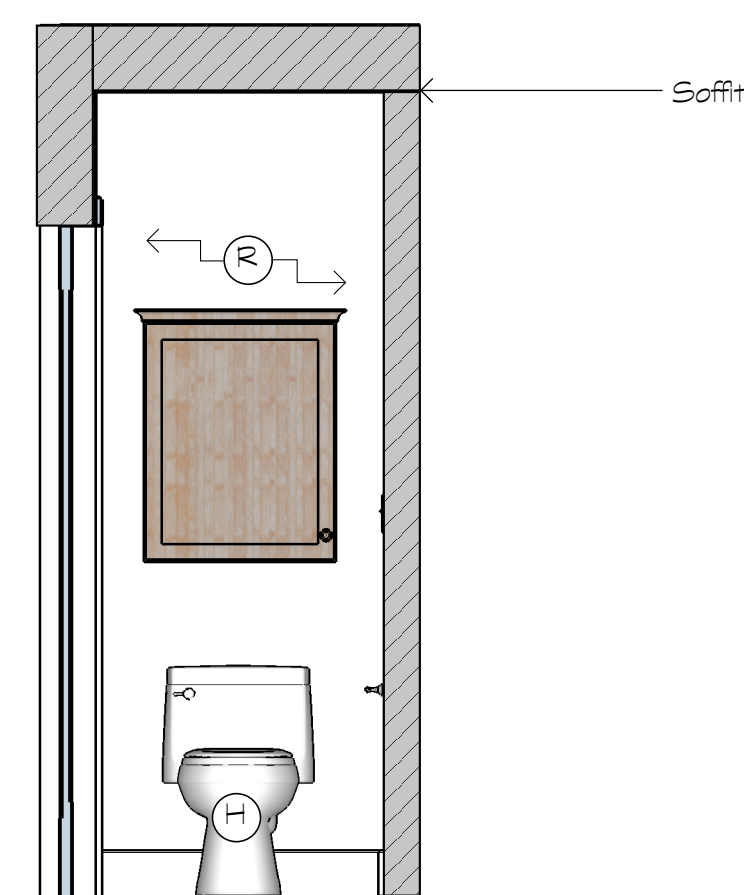
ELEVATION - WATER CLOSET
A21 005 | SCALE: 1/2" = 1'-0"



ELEVATION - WATER CLOSET
A21 006 | SCALE: 1/2" = 1'-0"



ELEVATION - WATER CLOSET
A21 008 | SCALE: 1/2" = 1'-0"



ELEVATION - WATER CLOSET
A21 007 | SCALE: 1/2" = 1'-0"