



Have a promo code? Enter it here!

Register online at icevisioncloud.com - don't forget to check for a verification email! It contains a link to activate your account.



Download!

Double-click and run!

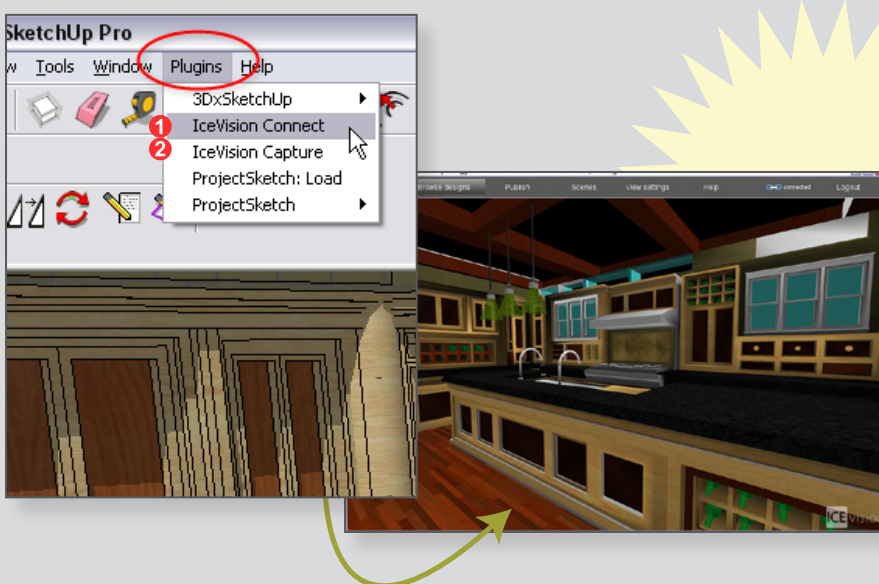


Navigate to the Home page and download the plug-in. This is what allows SketchUp and ICEvision to talk to each other. Run this program and re-start SketchUp Pro.

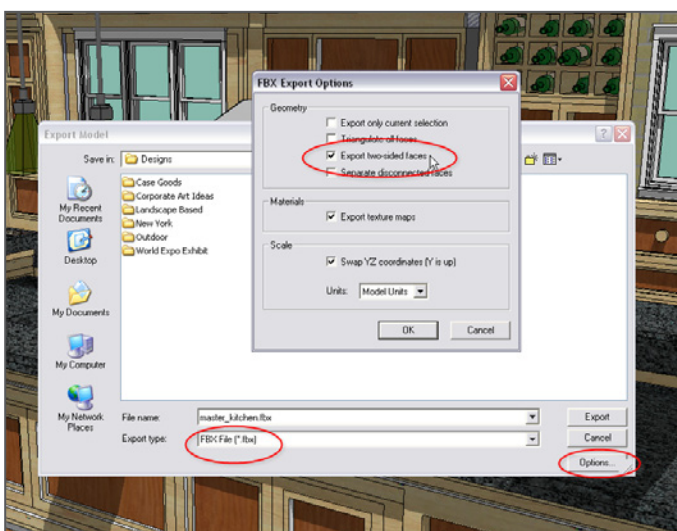
You'll only need to complete this step once!



Sign into your account and launch the ICEvision Publisher from the Home page. Once it's open, you can Capture your design from SketchUp.



Connect to ICEvision and capture your design. Now you can add Scenes & Annotations, then Publish and share!



TIP: For best results, adjust your export settings to "Export two-sided faces".

1. Go to: File > Export > 3D Model
2. Choose the export type "FBX file"
3. In Options, turn on "Export two-sided faces"
4. Click OK
5. Cancel out of the Export

You will only need to establish this setting once. It will now be applied to all exports!